

## SET DECORATION: ATLANTIS



Lot 753

### **ATLANTIS MEDIUM SQUARE WALL FAÇADE**

Ancient-themed wall façade, used as set decoration in the hallways of Atlantis. Panel is made from MDF with raised trim and carved diamond pattern. Measures 30in x 42.25in x .5in

\$ 200 - \$ 400



Lot 754

### **ATLANTIS MEDIUM SQUARE WALL FAÇADE**

Ancient-themed wall façade, used as set decoration in the hallways of Atlantis. Panel is made from MDF with raised trim and carved diamond pattern. Measures 29.75in x 42in x .5in

\$ 200 - \$ 400



Lot 755

### **ATLANTIS SMALL SQUARE WALL FAÇADE WITH BACKING**

Ancient-themed wall façade, used as set decoration in the hallways of Atlantis. Panel is made from MDF with raised trim and carved diamond pattern. Measures 36in x 36in x .75in.

\$ 200 - \$ 400

# SET DECORATION: ATLANTIS

332



Lot 756

## ATLANTIS SMALL SQUARE WALL FAÇADE WITH BACKING

Ancient-themed wall façade, used as set decoration in the hallways of Atlantis. Panel is made from MDF with raised trim and carved diamond pattern. Measures 36in x 36in x .75in.

\$ 200 - \$ 400

756



Lot 758

## ATLANTIS LARGE GREEN WALL FAÇADE

Ancient-themed wall façade, used as set decoration in the hallways of Atlantis. Panel is made from MDF with six CNC cut recessed line panels. Measures 25in x 22.5in x .5in.

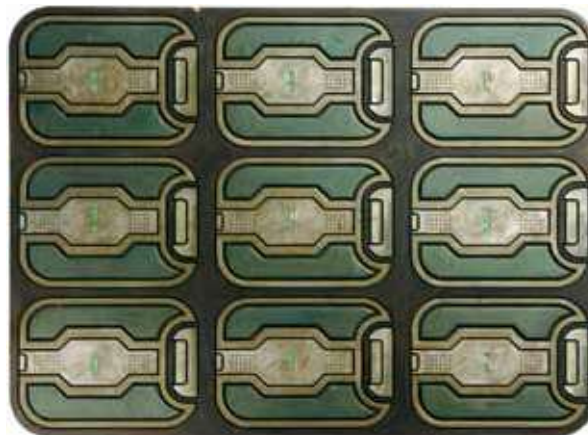
\$ 200 - \$ 400

Lot 757

## ATLANTIS SMALL GREEN WALL FAÇADE

Ancient-themed wall façade, used as set decoration in the hallways of Atlantis. Panel is made from MDF with six CNC cut recessed line panels. Measures 25in x 33.25in x .5in.

\$ 200 - \$ 400

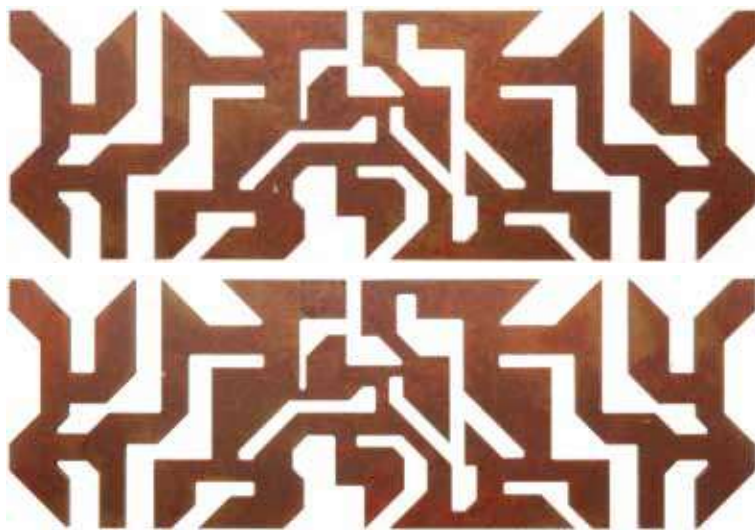


757

LOTS 756 - 758



## SET DECORATION: ATLANTIS

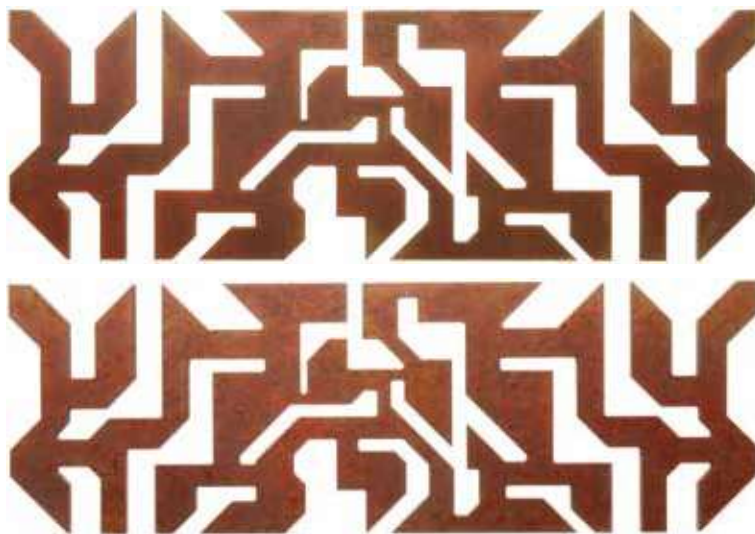


Lot 759

### **ATLANTIS ORNAMENTAL WALL BORDER**

A pair of decorative wall mounts from Atlantis. Panels are made of MDF and painted copper with brown aging. Each measures .5in x 24in x 8in.

\$ 100 - \$ 200



Lot 760

### **ATLANTIS ORNAMENTAL WALL BORDER**

A pair of decorative wall mounts from Atlantis. Panels are made of MDF and painted copper with brown aging. Each measures .5in x 24in x 8in.

\$ 100 - \$ 200

# SET DECORATION: ATLANTIS

334



Lot 761

## **BLOCK-STYLE ATLANTIS HALLWAY LIGHT**

Ancient wall decoration from Atlantis. Box is plywood and covered with plastic and foam blocks and three removable metal boxes which light up when plugged in via a power strip in the back. Measures 91.5in x 22in x 9.5in.

\$ 600 - \$ 800



Lot 762

## **BLOCK-STYLE ATLANTIS HALLWAY LIGHT**

Ancient wall decoration from Atlantis. Box is plywood and covered with plastic and foam blocks and three removable metal boxes which light up when plugged in via a power strip in the back. Measures 91.5in x 22in x 9.5in.

\$ 600 - \$ 800



Lot 763

## **BLOCK-STYLE ATLANTIS HALLWAY LIGHT**

Ancient wall decoration from Atlantis. Box is plywood and covered with plastic and foam blocks and three removable metal boxes which light up when plugged in via a power strip in the back. Measures 91.5in x 22in x 9.5in.

\$ 600 - \$ 800



Lot 764

## **BLOCK-STYLE ATLANTIS HALLWAY LIGHT**

Ancient wall decoration from Atlantis. Box is plywood and covered with plastic and foam blocks and three removable metal boxes which light up when plugged in via a power strip in the back. Measures 91.5in x 22in x 9.5in.

\$ 600 - \$ 800

LOTS 761 - 764

## SET DECORATION: ATLANTIS



Lot 765

### **TURQUOISE ATLANTIS HALLWAY LIGHT**

Ancient wall decoration from Atlantis. Box is metal over a plywood frame and features seven acrylic crystals which light when plugged in. Measures 118in x 4.25in x 5in.

\$ 600 - \$ 800



Lot 766

### **TURQUOISE ATLANTIS HALLWAY LIGHT**

Ancient wall decoration from Atlantis. Box is metal over a plywood frame and features seven acrylic crystals which light when plugged in. Measures 79in x 4.25in x 5in.

\$ 600 - \$ 800



Lot 767

### **TURQUOISE ATLANTIS HALLWAY LIGHT**

Ancient wall decoration from Atlantis. Box is metal over a plywood frame and features seven acrylic crystals which light when plugged in. Measures 79in x 4.25in x 5in.

\$ 600 - \$ 800



Lot 768

### **TURQUOISE ATLANTIS HALLWAY LIGHT**

Ancient wall decoration from Atlantis. Box is metal over a plywood frame and features seven acrylic crystals which light when plugged in. Measures 79.25in x 4.25in x 5in.

\$ 600 - \$ 800



## SET DECORATION: ATLANTIS

336



Lot 769

### ATLANTIS WALL FIXTURE

Dogbone-shaped Atlantis wall light, used only in key city areas, including the administrator's office. Fixture is made of layered plywood with three clear acrylic panels which light when plugged in. Fixture measures 58in x 19in x 10.75in.

\$ 800 - \$ 1,200



Lot 770

### ATLANTIS WALL FIXTURE

Dogbone-shaped Atlantis wall light, used only in key city areas, including the administrator's office. Fixture is made of layered plywood with three clear acrylic panels which light when plugged in. Fixture measures 58in x 19in x 10.75in.

\$ 800 - \$ 1,200

LOTS 769 - 770

## SET DECORATION: ATLANTIS



Lot 771

### **8-FOOT ATLANTIS WALL FAÇADE**

Ancient-themed wall façade, used as set decoration in Atlantis. Panel is made of lauan and features raised textures. Measures 100.75in x 30in x .5in.

\$ 200 - \$ 400



Lot 772

### **8-FOOT ATLANTIS WALL FAÇADE**

Ancient-themed wall façade, used as set decoration in Atlantis. Panel is made of lauan and features raised textures. Measures 100.75in x 30in x .5in.

\$ 200 - \$ 400

LOTS 771 - 772



## SET DECORATION: GOA'ULD



338

Lot 773

### **RING TRANSPORT PLATFORM**

The top edge of a set of transport rings, configured to appear recessed in the floor. This platform was introduced in the SG-1 Season Six episode "The Other Guys" and used throughout the rest of the series. The ring platform is a similar technology to the Stargate, and was also designed by the Ancients. Includes a panel which opens, revealing three clear control crystals that light when inserted into an outlet. Panels are made of plywood with laminated designs on the top edges. Includes a welded steel cart for transport. Rings have a 12 foot diameter when assembled.

\$ 800 - \$ 1,200

LOT 773



## SET DECORATION: GOA'ULD

Lot 774

### **GOA'ULD CARGO SHIP STEERING COLUMN**

Light-up steering column introduced in the SG-1 Season Three episode "Deadman Switch" and seen repeatedly throughout the rest of the series. This device was used by multiple actors over the years to pilot the various cargo ships and Al'kesh that were seen on screen. Prop lights up, is made of resin and features a sliding column to adjust to the user's distance from the controls. Measures 24in x 11.5in x 11.5in.

\$ 600 - \$ 800



## SET DECORATION: GOA'ULD

340



Lot 775

### GOA'ULD SYSTEM LORD SUMMIT CHAIR

Gold-finished wooden throne chair, used by a Goa'uld System Lord during the Season Five two-part episode "Summit" and "Last Stand". This chair was used during a rare summit of the System Lords, during which they decided to allow the Goa'uld Anubis to rejoin their ranks. Chair measures 44.75in x 41.75in x 44in.

\$ 200 - \$ 400



Lot 776

### GOA'ULD SYSTEM LORD SUMMIT CHAIR WITH CUSHION

Gold-finished wooden throne chair, used by a Goa'uld System Lord during the Season Five two-part episode "Summit" and "Last Stand". This chair, which includes a velvet cushion, was used during a rare summit of the System Lords, during which they decided to allow the Goa'uld Anubis to rejoin their ranks. Chair measures 44.75in x 41.75in x 44in. Cushion measures 18.5in x 19in x 1.75in.

\$ 200 - \$ 400



Lot 777

### GOA'ULD THRONE

Throne used by Vala Mal Doran posing as Qetesh in the SG-1 Season Nine episode, "The Powers That Be". Vala reclaimed this throne after a considerable absence from P8X-412, but relinquished the position hoping win the villagers over from an Ori Prior. Throne is wooden and painted to resemble granite. Measures 80in in height with a 59in square base.

\$ 200 - \$ 400

LOTS 775 - 777



## SET DECORATION: GOA'ULD



Lot 778

### GOA'ULD TACTICAL STATION

Tactical station for Goa'uld ships introduced in the SG-1 Season Four episode "Exodus" and reused throughout the rest of the series. The device was created from several components featured in previous props, including Ma'chello's mind transfer machine in "Holiday" (to comprise the body) and Pelops's anti-aging device from Season One's "Brief Candle". Console is made of wood with rounded corners sitting on top of a wooden pedestal with sculpted styrofoam sides. Features two acrylic domes (one lights) and a light-up resin box. Device functions, and measures 39.5in x 19.75in x 46.25in.

\$ 400 - \$ 600

LOT 778

## SET DECORATION: GOA'ULD



779

Lot 779

### GOA'ULD TABLE

A table of Goa'uld design, used in countless sets throughout SG-1. The parasitic Goa'uld borrowed their architecture from the design of the Stargates, as represented by the detailing on the sides of this set piece. Table is made of wood with Goa'uld detailing and rests on a wooden box stand. Measures 90.75in x 36in x 32.75in.

\$ 400 - \$ 600



780

Lot 780

### GOA'ULD IMPLANTATION TABLE

Table used by Apophis and Amaunet to pick the perfect host in the SG-1 pilot episode, "Children of the Gods". This piece was reused in numerous sets throughout the series. Table is made of wood and sits on a wooden box stand. Six white acrylic panels light up when table is plugged in. Measures 79.5in x 32in x 30in.

\$ 400 - \$ 600

LOTS 779 - 780



## SET DECORATION: GOA'ULD



Lot 781

### GOA'ULD CARRYING PLATFORM

Platform introduced in the SG-1 pilot, "Children of the Gods". This prop carried food and delicacies to Apophis's table just before SG-1 encountered Apophis, who clearly was not expecting them as guests. It was also used to carry naquadah in Season Four's "Upgrades", and appeared in many other episodes. Platform is made of vacuum-form plastic with a metal pipe frame and four resin legs. Measures 51.5in x 27.5in x 5.5in.

\$ 100 - \$ 200



Lot 782

### GOA'ULD PEDESTAL

Egyptian-themed wooden Goa'uld pedestal and resin globe. Statue features vacuum-formed plastic panels with raised hieroglyphics. Measures 57.75in x 12.25in x 12.25in.

\$ 400 - \$ 600



Lot 783

### GOA'ULD PEDESTAL

Egyptian-themed wooden Goa'uld pedestal and resin globe. Statue features vacuum-formed plastic panels with raised hieroglyphics. Measures 57.75in x 12.25in x 12.25in.

\$ 400 - \$ 600

## SET DECORATION: GOA'ULD

344



Lot 784  
**GOA'ULD BRAZIER**

Brazier featured in the Goa'uld sets on SG-1. The Goa'uld often preferred fire as a dramatic alternative to typical lighting fixtures. Base is made of wood and features a metal bowl with gas fittings inside. Brazier is 35in x 12in square. Bowl has a 14in diameter.

\$ 400 - \$ 600



Lot 785  
**GOA'ULD BRAZIER**

Brazier featured in the Goa'uld sets on SG-1. The Goa'uld often preferred fire as a dramatic alternative to typical lighting fixtures. Base is made of wood and features a metal bowl with gas fittings inside. Brazier is 35in x 12in square. Bowl has a 14in diameter.

\$ 400 - \$ 600



Lot 786  
**GOA'ULD BRAZIER**

Brazier featured in the Goa'uld sets on SG-1. The Goa'uld often preferred fire as a dramatic alternative to typical lighting fixtures. Base is made of wood and features a metal bowl with gas fittings inside. Brazier is 35in x 12in square. Bowl has a 14in diameter.

\$ 400 - \$ 600



Lot 787  
**GOA'ULD BRAZIER**

Brazier featured in the Goa'uld sets on SG-1. The Goa'uld often preferred fire as a dramatic alternative to typical lighting fixtures. Base is made of wood and features a metal bowl with gas fittings inside. Brazier is 35in x 12in square. Bowl has a 14in diameter.

\$ 400 - \$ 600

LOTS 784 - 787



# SET DECORATION: GOA'ULD

Lot 788

## MELTED ANUBIS STATUE

A melted statue shaped into the form of Anubis. The current design was used as set dressing in the Lucian Alliance sets in SG-1. This statue was often seen accompanying flaming braziers on Goa'uld sets, but was modified in the later seasons as a symbol of the end of their reign. Measures 63in tall with a 14in diameter.

\$ 400 - \$ 600



Lot 789

## GOA'ULD HIEROGLYPHICS WALL FAÇADE

A complete panel of Goa'uld hieroglyphics, used throughout the production of SG-1. These hieroglyphics were introduced in the pilot episode "Children of the Gods" and were used in Goa'uld sets throughout the entire series. Sheet is made of vacuum-formed plastic and measures 72.75in x 42.5in x .5in.

\$ 400 - \$ 600

Lot 790

## EGYPTIAN PANELING FROM "MOEBIUS"

Egyptian-themed paneling taken from Ra's palace in the SG-1 Season Eight episode, "Moebius, Part 1". SG-1 travels into the past to recover a Zero Point Module, and must enter Ra's palace to retrieve the device. Panel is made of foam and features raised hieroglyphics. Measures 23.25in x 15.5in x 1in.

\$ 200 - \$ 400









SHIPS

## SHIPS: DAEDALUS-CLASS



Lot 791

### DAEDALUS-CLASS PILOT CONSOLE

Light-up console with both static and depressible buttons, used aboard the various human battle cruisers from SG-1 and Atlantis. Various personnel used this panel to help enhance the believability of the ship they served on. Features functioning lights, a working 14-inch monitor, an aluminum control yoke with plastic handles and numerous buttons and switches. Measures 64in x 62.25in 45.5in..

\$ 1,000 - \$ 2,000

LOT 791



# SHIPS: DAEDALUS-CLASS

Lot 792

## DAEDALUS-CLASS CONTROL CONSOLE

Light-up console with static buttons, used aboard the various human battle cruisers from SG-1 and Atlantis. This console was joined on-screen with two identical cabinets. Features a working 17in flatscreen monitor, acrylic buttons which glow when unit is plugged in, and acrylic panels. Measures 45.75in x 30in x 42in.

\$ 400 - \$ 600

Lot 793

## DAEDALUS-CLASS CONTROL CONSOLE

Light-up console with static buttons, used aboard the various human battle cruisers from SG-1 and Atlantis. This console was joined on-screen with two identical cabinets. Features a working 17in flatscreen monitor, acrylic buttons which glow when unit is plugged in, and acrylic panels. Measures 45.75in x 30in x 42in.

\$ 400 - \$ 600

Lot 794

## DAEDALUS-CLASS CONTROL CONSOLE

Light-up console with static buttons, used aboard the various human battle cruisers from SG-1 and Atlantis. This console was joined on-screen with two identical cabinets. Features a working 17in flatscreen monitor, acrylic buttons which glow when unit is plugged in, and acrylic panels. Measures 45.75in x 30in x 42in.

\$ 400 - \$ 600



Lot 795

## DAEDALUS-CLASS FREESTANDING CONSOLE

Portable free-standing console with both static and depressible buttons, used aboard the various human battle cruisers from SG-1 and Atlantis. Prop is made of plywood and MDF with raised panels and non-functional keyboards. Panels light when plugged in. Measures 32.5in x 16.25in x 38.75in.

\$ 400 - \$ 600

LOTS 792 - 795

# SHIPS: DAEDALUS-CLASS - PROMETHEUS



Lot 796

## DAEDALUS-CLASS TWO-SEATER CONSOLE

Free-standing console with both static and working buttons, designed to seat two crew members. This console was used in both SG-1 and Atlantis, and is made of plywood and MDF. Features two functioning 20in flatscreen monitors and numerous buttons which glow when unit is powered. Measures 77.5in x 30in x 44.25in.

\$ 600 - \$ 800



Lot 798

## PROMETHEUS BRIDGE CHAIR

Cockpit chair from the Prometheus, seen from Season Six to Season Nine of SG-1. Chair is made from plywood and includes MDF panel detailing. Measures 48.75in x 20.5in x 23.5in.

\$ 400 - \$ 600



Lot 797

## USS APOLLO PLAQUE AND FRAME

Bridge plaque frame and U.S.S. Apollo plaque, seen throughout Atlantis and SG-1 to represent various space craft. The lower portion of the plaque was designed to have the plaque of a different ship cover the top of the Apollo plaque for when the set needed to represent another vessel. Plaque and panel are made of MDF. Plaque measures 24.5in x 19.75in x 1.25in. Panel measures 38.75in x 36in x .5in.

\$ 1,000 - \$ 2,000

LOTS 796 - 798



# SHIPS: DAEDALUS-CLASS

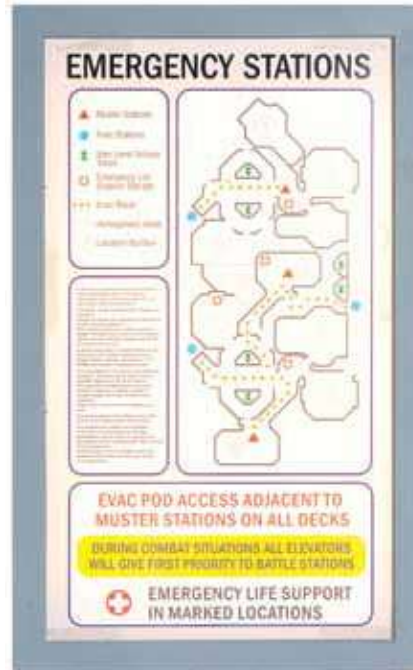


Lot 799

## DAEDALUS-CLASS CRYSTAL DRAWER

Pull-out drawer featuring computer crystals and working lights, used as set dressing for the human battle cruisers on SG-1 and Atlantis. Ships like the Daedalus and Prometheus used reverse-engineered Goa'uld technology, including crystals, in order for their ships to function. Cabinet features simulated circuitry details and a frosted acrylic panel with 25 holes for the accompanying acrylic crystals. Drawer measures 31.5in x 25.5in x 11.5in.

\$ 200 - \$ 400



Lot 800

## DAEDALUS-CLASS EMERGENCY STATION LIGHT BOX

Light box with map indicating the location of various emergency stations for a specific deck of a human battle cruiser, seen throughout SG-1 and Atlantis. Box is made of wood and features an acrylic panel with a working translight. Measures 41.25in x 25.5in x 8.25in.

\$ 200 - \$ 400



Lot 801

## DAEDALUS-CLASS CORRIDOR GIRDERS

Two wooden corridor girders from the human battle cruisers, seen throughout SG-1 and Atlantis. These set pieces were introduced in the SG-1 Season Six episode "Prometheus" and were in use through the first season of Stargate Universe. One beam is backed with plywood. Each measures 84in x 15in x 9in.

\$ 100 - \$ 200

LOTS 799 - 801

# SHIPS: DAEDALUS-CLASS

352



Lot 802

## DAEDALUS-CLASS CORRIDOR GIRDERS

Two wooden corridor girders from the human battle cruisers, seen throughout SG-1 and Atlantis. These set pieces were introduced in the SG-1 Season Six episode "Prometheus" and were in use through the first season of Stargate Universe. One beam is backed with plywood. Each measures 84in x 15in x 9in.

\$ 100 - \$ 200

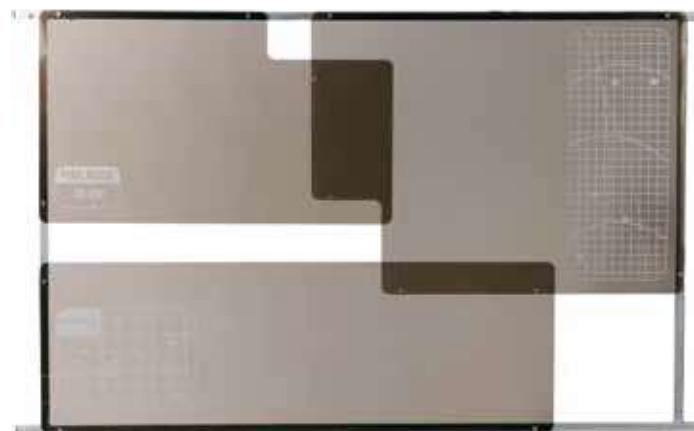


Lot 803

## DAEDALUS-CLASS CORRIDOR GIRDERS

Two wooden corridor girders from the human battle cruisers, seen throughout SG-1 and Atlantis. These set pieces were introduced in the SG-1 Season Six episode "Prometheus" and were in use through the first season of Stargate Universe. One beam is backed with plywood. Each measures 84in x 15in x 9in.

\$ 100 - \$ 200



Lot 804

## DAEDALUS-CLASS BULKHEAD PANEL

Three acrylic panels from the BC-304 Battle Cruiser Engine Room set, mounted on an aluminum frame and used throughout SG-1 and Atlantis as set dressing. These pieces were introduced with the Daedalus in the beginning of Atlantis Season Two, as enhancements to the BC-303 set. Measures 89in x 54in x 2.5in.

\$ 200 - \$ 400



Lot 805

## DAEDALUS-CLASS DECK DIRECTORY PANEL

A deck directory panel taken from the Human battle cruiser set, seen throughout SG-1 and Atlantis. Panel is made of MDF with white diffusion paper. Measures 23.75in x 11.75in x .75in.

\$ 200 - \$ 400

LOTS 802 - 805



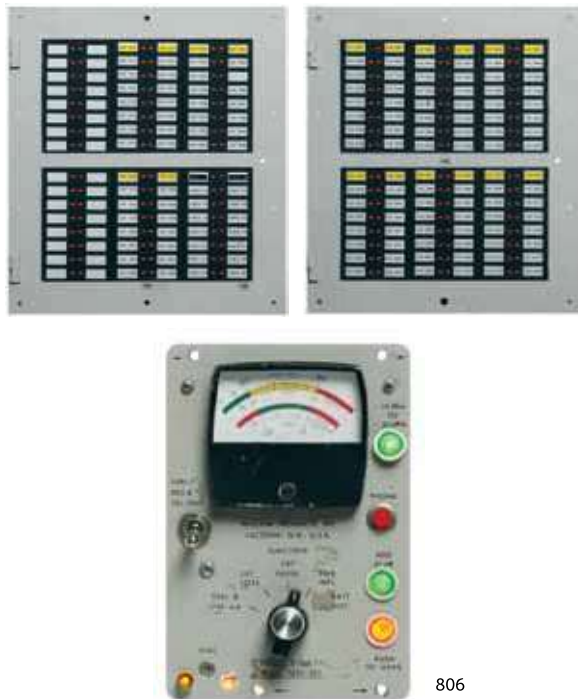
# SHIPS: DAEDALUS-CLASS

Lot 806

## DAEDALUS-CLASS CIRCUIT BOARD PANELING

A series of light-up circuit boards used throughout the battle cruiser sets on SG-1 and Atlantis, from the bridge to the conference rooms and adjacent hallways. Features two wall-mounted panels featuring red LED lights which function when unit is plugged in. Includes control panel with needle gauge and multi-colored LEDs which also function. Circuit boards measure 20in x 22.25in x 1.5in. Control panel measures 6.25in x 4.25in x 1.5in.

\$ 200 - \$ 400



Lot 807

## DAEDALUS-CLASS CIRCUIT BOARD PANELING

Two light-up circuit boards used throughout the battle cruiser sets on SG-1 and Atlantis, from the bridge to the conference rooms and adjacent hallways. Features 16 red LEDs which light up when unit is plugged in. Measures 20in x 22.25in x 1.5in.

\$ 100 - \$ 200



Lot 808

## HUMAN/ASGARD CONTROL PODIUM

Light-up podium with static buttons, used aboard the various human space craft from SG-1 and Atlantis, as well as the Pegasus Asgard facility in the Atlantis Season Five episode "The Lost Tribe". Podium measures 48.5in x 27in x 26.5in.

\$ 200 - \$ 400

LOTS 806 - 808

# SHIPS: PUDDLE JUMPER

354



Lot 809

## **PUDDLE JUMPER COCKPIT DASHBOARD, PORT SIDE**

Pilot side of the Puddle jumper cockpit, seen from Season Two of Atlantis forward. Dashboard is made of wood and features frosted acrylic panels with bronze decals, ten dial switches, four magnetic sliders, three bronze levers and a bronze control yoke with black rubber grips. Device lights when plugged in, but some lights have been made non-functional by production. Measures 54.75in x 43.25in x 14.75in.

\$ 600 - \$ 800

Lot 810

## **PUDDLE JUMPER DHD DASHBOARD**

Dashboard used throughout the production of Atlantis. This console sat in-between both pilot stations for the Jumper. The glyph panel features are of the type used from Season Two forward, after the console was replaced. Dashboard is made of wood with angled edges and recesses for the acrylic glyphs, which light up when pressed. Cabinet is open in the back. Inside is a remote which controls the brightness of the glyphs. Measures 65.5in x 24.25in x 40.5in.

\$ 800 - \$ 1,200

Lot 811

## **PUDDLE JUMPER COCKPIT DASHBOARD, STARBOARD SIDE**

The starboard side of the Puddle Jumper cockpit, seen from Season Two of Atlantis forward. Dashboard is made of wood and features frosted acrylic panels with bronze decals. Features seven dial switches, three magnetic sliders, two gear-like dials and a 10in flatscreen monitor. Unit lights when plugged in. Some lights have been rendered non-functional by production. Measures 54.5in x 43in x 14.75in.

\$ 600 - \$ 800

LOTS 809 - 811



## SHIPS: PUDDLE JUMPER



Lot 812

### **PUDDLE JUMPER MAIN CABIN CHAIR**

Chair from the forward cabin of the Puddle Jumper set, used in Atlantis. Features raised panel upholstery with laminated vinyl designs on the rear. Seat adjusts in height, while armrests adjust in height and width. Chair back angle is also adjustable. Measures 29in x 28.5in x 43.5in.

\$ 400 - \$ 600



Lot 813

### **PUDDLE JUMPER MAIN CABIN CHAIR**

Chair from the forward cabin of the Puddle Jumper set, used in Atlantis. Features raised panel upholstery with laminated vinyl designs on the rear. Seat adjusts in height, while armrests adjust in height and width. Chair back angle is also adjustable. Measures 29in x 28.5in x 43.5in.

\$ 400 - \$ 600



Lot 814

### **PUDDLE JUMPER MAIN CABIN CHAIR**

Chair from the forward cabin of the Puddle Jumper set, used in Atlantis. Features raised panel upholstery with laminated vinyl designs on the rear. Seat adjusts in height, while armrests adjust in height and width. Chair back angle is also adjustable. Measures 29in x 28.5in x 43.5in.

\$ 400 - \$ 600

355

LOTS 812 - 814

# SHIPS: PUDDLE JUMPER

356



Lot 815

## PUDDLE JUMPER REAR COCKPIT CONSOLE

Light-up console taken from the rear of the Puddle Jumper main cockpit, seen throughout Atlantis. Console is made of wood and features frosted acrylic panels and bronze decals. Panels are backlit when unit is plugged in. Measures 34in x 25in x 39.25in.

\$ 200 - \$ 400



Lot 816

## PUDDLE JUMPER REAR COCKPIT CONSOLE

Light-up console taken from the rear of the Puddle Jumper main cockpit, seen throughout Atlantis. Console is made of wood and features frosted acrylic panels and bronze decals. Panels are backlit when unit is plugged in. Measures 34in x 25in x 39.25in.

\$ 200 - \$ 400

Lot 817

## PUDDLE JUMPER CONTROL PANEL

Hero control panel from the original Puddle Jumper dashboard, used in Season One of Atlantis. Panel is made of layered acrylic with mesh decals and a faux computer screen. Measures 29.25in x 10.5in x 2in.

\$ 200 - \$ 400



LOTS 815 - 817



# SHIPS: PUDDLE JUMPER

Lot 818

## PUDDLE JUMPER REAR CABIN BENCH

Wooden two-seater bench and back with padded vinyl seat cushions, used in the rear cabin of the Puddle Jumper in all five seasons of Atlantis. Bench measures 37in x 22in x 18.75in, back measures 36.75in x 18.5in x 3in.

\$ 100 - \$ 200



818

Lot 819

## PUDDLE JUMPER REAR CABIN BENCH

Wooden two-seater bench and back with padded vinyl seat cushions, used in the rear cabin of the Puddle Jumper in all five seasons of Atlantis. Bench measures 37in x 22in x 18.75in, back measures 36.75in x 18.5in x 3in.

\$ 100 - \$ 200



819



820

Lot 820

## PUDDLE JUMPER REAR CABIN BENCH AND HIDDEN PANEL

Bench, seat back and hidden panel introduced in the Stargate Atlantis Season Two episode, "Grace Under Pressure". Rodney McKay accesses this bench when the Puddle Jumper he is inside crashes into the ocean, placing his life in jeopardy. The hidden panel is designed to be back-lit, and includes numerous slots for control crystals. Bench is made of styrofoam with two gray vinyl padded seat cushions. Back also includes vinyl cushions. The hidden panel is made of MDF and includes acrylic components. Bench measures 37in x 19in x 20.5in. Backing measures 37.5in x 20.75in x 5in.

\$ 400 - \$ 600

LOTS 818 - 820

# SHIPS: PUDDLE JUMPER

Lot 821

## PUDDLE JUMPER WALL PANELING

Light-up paneling taken from the cockpit of the Puddle Jumper, introduced in Season Two of Atlantis to enhance the appearance and lighting of the set. Paneling is made of plywood. Two of the boxes light, while the other two are backlit. Measures 65in x 17in x 4in.

\$ 400 - \$ 600



Lot 822

## PUDDLE JUMPER WALL PANELING

Light-up paneling taken from the cockpit of the Puddle Jumper, introduced in Season Two of Atlantis to enhance the appearance and lighting of the set. Paneling is made of plywood. Two of the boxes light, while the third is open for backlighting. Measures 39in x 14in x 4in.

\$ 400 - \$ 600



Lot 823

## PUDDLE JUMPER CONTROL CRYSTAL BOX

Light-up Puddle Jumper control crystal junction box with included control crystals, used as a circuitry access port for the Puddle Jumper throughout the run of Atlantis. Measures 15.25in x 14.75in x 6.25in.

\$ 300 - \$ 500



LOTS 821 - 823



# SHIPS: PUDDLE JUMPER

Lot 824

## PUDDLE JUMPER CONTROL CRYSTAL BOX

Control crystal box hatch with crystals and hatch handle, taken from the Puddle Jumper on Atlantis. Box is hinged and attached to a magnetic lauan lid. Measures 30.75in x 19.75in x 7.5in. (Shown Closed)

\$ 300 - \$ 500



824

825



Lot 825

## PUDDLE JUMPER CONTROL CRYSTAL BOX

Control crystal box hatch with crystals and hatch handle, taken from the starboard side of the Puddle Jumper on Atlantis. Box is hinged and attached to a magnetic lauan lid. Measures 30.75in x 19.75in x 7.5in. (Shown Open)

\$ 300 - \$ 500

Lot 826

## PUDDLE JUMPER CONTROL CRYSTAL BOX

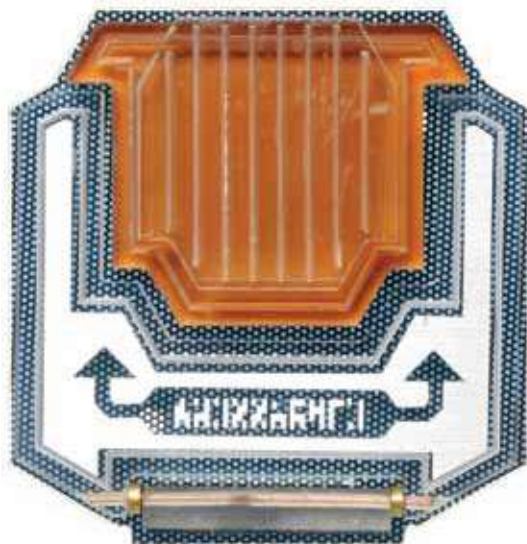
Light-up Puddle Jumper control crystal junction box with included control crystals, used as a circuitry access port for the Puddle Jumper throughout the run of Atlantis. This version features a clear plastic stylus. Measures 16.5in x 15.25in x 5.5in.

\$ 400 - \$ 600



LOTS 824 - 826

# SHIPS: PUDDLE JUMPER

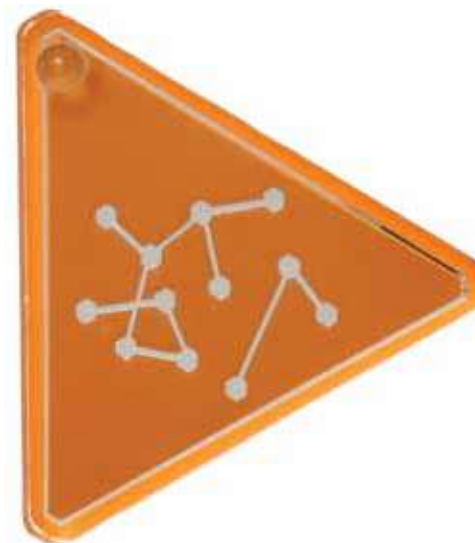


Lot 827

## PUDDLE JUMPER HATCH SWITCH

Switch for the Puddle Jumper hatch between compartments. Panel is made of acrylic. Measures 5.25in x 5.5in x 1in.

\$ 100 - \$ 200



Lot 829

## PUDDLE JUMPER DHD GLYPH

A glyph taken from the DHD console of the Atlantis Puddle Jumper, seen in Season One of the series. These DHD glyphs were ultimately phased out in favor of a smaller, back-lit variety the following season. Glyph is made of acrylic and features a clear rubber button. Measures 4in x 3.5in x .5in.

\$ 200 - \$ 400



Lot 828

## PUDDLE JUMPER DHD GLYPH

A glyph taken from the DHD console of the Atlantis Puddle Jumper, seen in Season One of the series. These DHD glyphs were ultimately phased out in favor of a smaller, back-lit variety the following season. Glyph is made of acrylic and features a clear rubber button. Measures 3.75in x 3.5in x .5in.

\$ 200 - \$ 400

LOTS 827 - 829



## SHIPS: PUDDLE JUMPER - OTHER SETS

Lot 830

### PUDDLE JUMPER DHD ACTIVATION BUTTON

Stargate activator button taken from the DHD console of the Atlantis Puddle Jumper, seen in Season One of the series. Pressing this button meant that seven glyphs were ready to be engaged on the Stargate. These DHD glyphs were ultimately phased out in favor of a smaller, back-lit variety the following season. Glyph is made of acrylic. Measures 6in x 2.75in x .5in.

\$ 200 - \$ 400



Lot 831

### PUDDLE JUMPER STORAGE CRATE

Black plastic Pelican crate used in the Puddle Jumper sets in Atlantis. These crates stored mission-sensitive supplies. Features wheels and an extendable pull handle. Interior is lined with black foam padding. Measures 24.5in x 19.5in x 11.75in.

\$ 200 - \$ 400

Lot 832

### ANCIENT WARSHIP ACCESS PANEL

Plant-on made for the warship Aurora, introduced in the Atlantis Season Two episode "Aurora" and seen on numerous Ancient warships thereafter. Features simulated Ancient lever, with Ancient writing translating to "Pull Open". Panel is made from rigid foam and measures 1.5in x 10in x 7.5in.

\$ 100 - \$ 200



LOTS 830 - 832

## OTHER SETS

362



Lot 833

### **TOK'RA CHAIR**

Wooden Tok'ra chair painted to resemble a triangular crystalline formation, introduced in Season Four of SG-1. Features a clear acrylic seat and chair back. Measures 60in x 36in x 30in.

\$ 200 - \$ 400



Lot 834

### **TOK'RA CHAIR**

Wooden Tok'ra chair painted to resemble a triangular crystalline formation, introduced in Season Four of SG-1. Features a clear acrylic seat and chair back. Measures 60in x 36in x 30in.

\$ 200 - \$ 400



Lot 835

### **ASGARD CONTROL CONSOLE**

Console used by Jack O'Neill in the SG-1 Season Three finale, "Nemesis", and seen in numerous later episodes. Device features a brass plate with faux buttons and Asgard symbols. Console body is made of wood. Measures 52in x 35in x 25in.

\$ 200 - \$ 400

LOTS 833 - 835



Lot 836

## F-302 INSTRUMENT PANEL

Instrumentation panel from the aft seat of the F-302 cockpit, introduced in Season Six of SG-1 and seen throughout the rest of the series into Atlantis. The F-302 was an entirely reverse-engineered Goa'uld death glider, without the pitfalls of being equipped with recall technology. Panel is made of MDF and features two 10in computer monitors with switches, dials and buttons. Panel is nonfunctional, and measures 45.5in x 21.5in x 14.5in.

\$ 600 - \$ 800



Lot 837

## CROCODILE WALL DECORATION

Wall decoration in the shape of a crocodile, used as set dressing throughout SG-1. This prop was seen in the background in numerous episodes, including Season Nine's "The Powers That Be" and Season Ten's "Bad Guys". Prop is made of rigid foam and measures 41in x 23in x 13in.

\$ 100 - \$ 200



Lot 838

## MEDIEVAL CHRISTIAN VILLAGE PLAQUE

Plaque from the square of the medieval Christian village, seen in the SG-1 Season Three episode "Demons". This sign includes middle-English writing. The image features the presence of an Unas, a soldier of the Goa'uld Sokar which routinely terrorized the villagers. Prop is made of wood and painted to resemble stone. Measures 22in x 15.5in x 13.75in.

\$ 100 - \$ 200



# OTHER SETS

Lot 839

## ORI SUPERGATE CONTROL CONSOLE AND COVER

Panels from a segment of the Ori Supergate which Samantha Carter accessed in the SG-1 Season Nine episode, "Camelot". Carter attempted to alter the crystals so that she could prevent the Ori from dialing in from their galaxy. This item comes in two layers. Upper layer consists of an MDF panel cut into the shape of the bottom layer. Measures 54in x 26in x 1.5in. Bottom layer consists of an acrylic panel made of MDF, featuring recessed slots for control crystals. Measures 53in x 25.5in x 1in.

\$ 200 - \$ 400

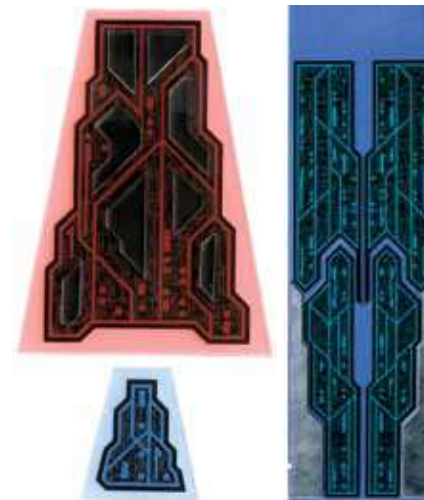
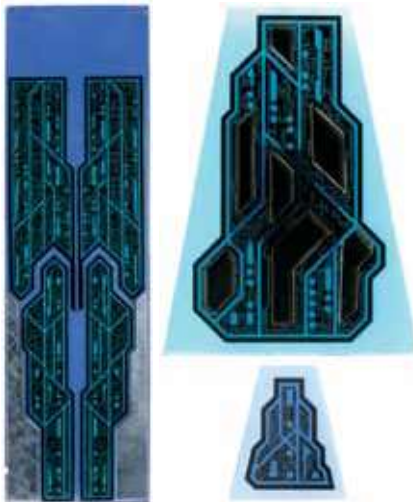


Lot 840

## REPLICATOR CONSOLE PANELING

Three sections of paneling taken from the Asuran city power pedestal, used as set decoration in the Atlantis Season Four episodes "Lifeline" and "Be All My Sins Remember'd". This hidden outpost of Replicators was discovered in the Atlantis Season Three episode, "Progeny". They were defeated by the unified forces of humans, Wraith and Travelers. Panels are made of frosted acrylic and backed with gels. From small to large, they measure 6.25in x 5.5in x .25in, 16in x 12in x .75in and 41.25in x 12in x 5in.

\$ 100 - \$ 200



Lot 841

## REPLICATOR CONSOLE PANELING

Three sections of paneling taken from the Asuran city power pedestal, used as set decoration in the Atlantis Season Four episodes "Lifeline" and "Be All My Sins Remember'd". This hidden outpost of Replicators was discovered in the Atlantis Season Three episode, "Progeny". They were defeated by the unified forces of humans, Wraith and Travelers. Panels are made of frosted acrylic and backed with gels. From small to large, they measure 6.25in x 5.5in x .25in, 16in x 12in x .75in and 41.25in x 12in x 5in.

\$ 100 - \$ 200

LOTS 839 - 841





Lot 842

## TARANIAN CONTROL PANEL

Control panel created for the Taranians in the Atlantis Season Two episode, "Inferno". Features twelve buttons with Taranian symbols. Prop lights when the bottom right button is pressed. Measures 5.75in x 4.75in x 1.5in.

\$ 100 - \$ 200



Lot 843

## TARANIAN CONTROL PANEL

Control panel created for the Taranians in the Atlantis Season Two episode, "Inferno". Features twelve buttons with Taranian symbols. Prop lights when the bottom right button is pressed. Measures 5.75in x 4.75in x 1.5in.

\$ 100 - \$ 200

## OTHER SETS

366

Lot 844

### QUINDOSIM TEST DEVICE

Device created by the Brotherhood of Fifteen on planet Sudaria to protect a Zero Point Module until the day an ancestor returned to claim it. The puzzle must be solved by placing the stones in the correct sequence to equal 15 in all directions. Anyone who answered incorrectly would be afflicted by a fatal poison. The correct answer revealed the Zero Point Module. Includes both the device and the nine stones. Prop is made of wood and painted to appear granite. Rubber braces extend out of the cabinet and over the wrist areas. Measures 44.25in x 32.25in x 16.5in. Puzzle pieces are made of MDF and measure 4.5in x 4.75in x .5in.

\$ 200 - \$ 400



LOT 844





Lot 845

## AURORA STASIS POD AND MANNAQUIN

Light-up life pod and included Aurora mannequin torso, used in the Atlantis Season Two episode, "Aurora". Sheppard's team comes upon the sleeping crewmembers of the Aurora, who have sustained themselves for ten thousand years inside these chambers. Pod is made from vacuum-formed clear plastic over a wooden frame with foam rails and raised MDF panel details. Mannequin is made of foam rubber. Pod measures 36.5in x 31in x 23in.

\$ 400 - \$ 600



Lot 846

## AURORA STASIS POD AND MANNAQUIN

Light-up life pod and included Aurora mannequin torso, used in the Atlantis Season Two episode, "Aurora". Sheppard's team comes upon the sleeping crewmembers of the Aurora, who have sustained themselves for ten thousand years inside these chambers. Pod is made from vacuum-formed clear plastic over a wooden frame with foam rails and raised MDF panel details. Mannequin is made of foam rubber. Pod measures 36.5in x 31in x 23in.

\$ 400 - \$ 600

## OTHER SETS



Lot847

### **TOK'RA TRANSPORT CRATE**

Transport crate used by numerous races including the Goa'uld and Tok'ra, seen throughout SG-1 and Atlantis. Prop is made of wood and features two sliding handles. Lid does not open. Measures 36in x 29in x 18.25in.

\$ 200 - \$ 400

Lot 848

### **CARGO SHIP POWER COIL**

Power coil to a Goa'uld cargo ship, featured in the SG-1 Season Nine episode, "The Ties That Bind". Vala sold this device to the monks of the Goa'uld Grannus who named it the "Ring of Shen Marak". Device is made of metal and features glass and metal cylinders surrounded by brass rods, four acrylic crystals and wires. Measures 21.25in in height with an 18in diameter.

\$ 200 - \$ 400





## OTHER SETS

Lot 849

### GOA'ULD TRANSPORT CRATE

Cargo crate featuring the symbol of Apophis, used as set dressing for numerous episodes of SG-1. This particular crate is designed to transport six Zat'nikatels. Prop is made of wood with a removable lid and features foam padding for Zat guns. Measures 39.5in x 18.75in x 25.5in.

\$ 400 - \$ 600



369

LOT 849

## OTHER SETS



Lot 850

### ORIGIN WALL SCONCE

Wall sconce in the shape of the symbol of Origin, seen on Ori warships throughout Season Ten of SG-1. The Ori developed the Origin religion thousands of years ago and shaped their societies so that beings beneath them would worship and provide them with energy. This wall decoration is a symbol of that devotion. Sconce is made of metal and mounted on an MDF panel. Features a frosted plastic lens over the light. Functionality unverified. Measures 27in x 15.25in x 5in.

\$ 400 - \$ 600

LOT 850





Lot 851

## **HARMONY'S VICTORY PAINTING**

Painting of Harmony's interpretation of her victory over the Genii, unveiled in the last few seconds of the Atlantis Season Four episode, "Harmony". Image features Rodney McKay heroically defending the young princess while John Sheppard cowers in fear. Painting is printed on a sheet of vinyl and is mounted on a wooden frame. Features two metal hanging brackets in the back. Measures 82.25in x 57.25in x 4.25in.

\$ 800 - \$ 1,200

371

LOT 851







An aerial, high-angle photograph of a large, dense crowd of people gathered in a circular or oval-shaped outdoor area. The people are seen from above, appearing as a mosaic of various colors (clothing) against the ground. The crowd is spread out across the entire visible area, with some denser patches and some more open spaces. The overall shape of the gathering is roughly circular, with the crowd filling most of the frame.

END OF AUCTION

# CONDITIONS OF SALE

These Conditions of Sale and the Auction Notices contain all the terms on which Propworx and the seller contract with the buyer. They may be amended by posted notices or oral announcements made during the sale. By bidding at auction you agree to be bound by these terms.

No bid may be placed in any manner unless the bidder has reviewed and agrees to all of the Conditions of Sale, either on-line or printed in the catalog. By placing any bid, the bidder represents and warrants to Propworx that he or she has fully reviewed and agrees to be bound by all of these terms. Without such representation, warranty and agreement, Propworx does not permit the bidder to bid.

## 1. PROPWORX AS AGENT

Except as otherwise stated Propworx acts as agent for the seller. The contract for the sale of the property is therefore made between the seller and the buyer. Any questions regarding the auction should be directed to Propworx or its designated representative. All online bidders shall, in addition to these Conditions of Sale, be bound by the online Terms of Use, available at [www.propworx.com/onlinebidding](http://www.propworx.com/onlinebidding), the provisions of which are incorporated herein by this reference. In the event of any conflict between said Terms of Use and these Conditions of Sale, the terms and conditions set forth herein shall control.

## 2. BEFORE THE SALE

### (a) Examination of property

Prospective buyers are strongly advised to examine personally any property in which they are interested, before the auction takes place. Neither Propworx nor the seller provides any guarantee in relation to the nature of the property apart from the Limited Warranty in paragraph 6 below. The property is otherwise sold "as is".

All statements by us in the printed and online catalog entry for the property, or made orally or in writing elsewhere, are statements of opinion and are not to be relied on as statements of fact. Such statements do not constitute a representation, warranty or assumption of liability by us of any kind. Referen-

ces in the printed and online catalog entry or the condition report to damage or restoration are for guidance only and should be evaluated by personal inspection by the bidder or a knowledgeable representative. The absence of such a reference does not imply that an item is free from defects or restoration, nor does a reference to particular defects imply the absence of any others. Estimates of the selling price should not be relied on as a statement that this is the price at which the item will sell or its value for any other purpose. Except as set forth in paragraph 6 below, neither Propworx nor the seller is responsible in any way for errors and omissions in the catalog or any supplemental material.

### (b) Buyer's responsibility

Except as stated in the Limited Warranty in paragraph 6 below, all property is sold "as is" without any representation or warranty of any kind by Propworx or the seller. Buyers are responsible for satisfying themselves concerning the condition of the property and the matters referred to in the catalog entry.

## 3. AT THE SALE

### (a) Refusal of admission

Propworx has the right, at our complete discretion, to refuse admission to the premises, online registration or participation in any auction and to reject any bid.

### (b) Registration before bidding

A prospective buyer must complete and sign a registration form or complete and authorize the online registration process and provide identification before bidding. We may require the production of bank or other financial references.

### (c) Bidding as principal

When making a bid, a bidder is accepting personal liability to pay the purchase price, including the buyer's premium and all applicable taxes, plus all other applicable charges, unless it has been explicitly agreed in writing with Propworx before the commencement of the sale that the bidder is acting as agent on behalf of an identified third party acceptable to Propworx, and that Propworx will only look to the principal for payment.

### (d) Absentee bids

Absentee bids should be placed online as designated at the [www.propworx.com/onlinebidding](http://www.propworx.com/onlinebidding) website. Written bids will not be accepted for this auction.

### (e) Telephone bids

Propworx will accept phone bids on a very limited number of items only. Please contact Propworx for details. All other bidders should bid online if they are unable to attend the auction in-person.

### (f) Video or digital images

At some auctions there may be a video or digital screen. Errors may occur in its operation and in the quality of the image and we do not accept liability for such errors.

### (g) Reserves

All lots in this sale are offered without reserve.

### (h) Auctioneer's discretion

The auctioneer has the right, at his absolute and sole discretion, to refuse any bid, to advance the bidding in such a manner as he may decide, and, in the case of error or dispute, and whether during or after the sale, to determine the successful bidder, to continue the bidding, to cancel the sale or to reoffer and resell the item in dispute. If any dispute arises after the sale, our sale record is conclusive.

### (i) Successful bid and passing of risk

Subject to the auctioneer's discretion, the highest bidder accepted by the auctioneer will be the buyer and the striking of the auctioneer's hammer marks the acceptance of the highest bid and the conclusion of a contract for sale between the seller and the buyer. Risk and responsibility for the lot passes to the buyer at the expiration of seven calendar days from the date of the sale or on collection by the buyer if earlier.

## 4. AFTER THE SALE

### (a) Buyer's premium

In addition to the hammer price, the buyer agrees to pay to us the buyer's premium together with any

applicable sales tax or compensating use tax. The buyer's premium is 20% of the final bid price of each lot up to and including \$100,000 and 15% of the excess of the hammer price above \$100,000.

### (b) Payment and passing of title

Immediately following the sale, the buyer must provide us with his or her name and permanent address and, if so requested, details of the bank from which payment will be made. The buyer must pay the full amount due (comprising the hammer price, buyer's premium and any applicable taxes) not later than 5.00pm on the seventh calendar day following the sale. This applies even if the buyer wishes to export the lot and an export license is, or may be, required. The buyer will not acquire title to the lot until all amounts due to us from the buyer have been received by us in good cleared funds even in circumstances where we have released the lot to the buyer.

### (c) Collection of purchases

We shall be entitled to retain items sold until all amounts due to us have been received in full in good cleared funds, or until the buyer has satisfied such other terms as we, in our sole discretion, shall require. Subject to this, the buyer shall collect purchased lots within seven calendar days from the date of the sale unless otherwise agreed between us and the buyer.

### (d) Packing, handling and shipping

Buyer is responsible for picking up his or her merchandise, or for all shipping, handling and insurance charges through either Propworx or its designated agent as agreed upon by Propworx. Although we shall use reasonable efforts to take care when handling, packing and shipping a purchased lot, we are not responsible for the acts or omissions of third parties whom we might retain for these purposes. Similarly, where we may suggest other handlers, packers or carriers if so requested, we do not accept responsibility or liability for their acts or omissions.

### (e) Export license

Unless otherwise agreed by us in writing, the fact that the buyer wishes to apply for an export license does not affect his or her obligation to make payment within seven days nor our right to charge interest or storage charges on late payment. If the buyer



# CONDITIONS OF SALE

requests us to apply for an export license on his or her behalf, we shall be entitled to make a charge for this service. We shall not be obliged to rescind a sale nor to refund any interest or other expenses incurred by the buyer where payment is made by the buyer in circumstances where an export license is required.

## (f) Remedies for non payment

If the buyer fails to make payment in full in good cleared funds within the time required by paragraph 4(b) above, we shall be entitled in our absolute discretion to exercise one or more of the following rights or remedies (in addition to asserting any other rights or remedies available to us by law):

- (i) *to charge interest at such rate as we shall reasonably decide;*
- (ii) *to hold the defaulting buyer liable for the total amount due and to commence legal proceedings for its recovery together with interest, legal fees and costs to the fullest extent permitted under applicable law;*
- (iii) *to cancel the sale;*
- (iv) *to resell the property publicly or privately on such terms as we shall think fit;*
- (v) *to pay the seller an amount up to the net proceeds payable in respect of the amount bid by the defaulting buyer;*
- (vi) *to deduct the outstanding amount that remains unpaid by the buyer from any amounts that we may owe the buyer in any other transactions;*
- (vii) *where several amounts are owed by the buyer to us, or to Propworx International plc, or to any of its affiliates, subsidiaries or parent companies worldwide, in respect of different transactions, to apply any amount paid to discharge any amount owed in respect of any particular transaction, whether or not the buyer so directs;*
- (viii) *to reject at any future auction any bids made by or on behalf of the buyer or to obtain a deposit from the buyer before accepting any bids;*

(ix) *to exercise all the rights and remedies of a person holding security over any property in our possession owned by the buyer, whether by way of pledge, security interest or in any other way, to the fullest extent permitted by the law of the place where such property is located. The buyer will be deemed to have granted such security to us and we may retain such property as collateral security for such buyer's obligations to us;*

(x) *to take such other action as we deem necessary or appropriate.*

If we resell the property under paragraph (iv) above, the defaulting buyer shall be liable for payment of any deficiency between the total amount originally due to us and the price obtained upon resale, as well as for all costs, expenses, damages, legal fees and commissions and premiums of whatever kind associated with both sales or otherwise arising from the default. If we pay any amount to the seller under paragraph (v) above, the buyer acknowledges that Propworx shall have all of the rights of the seller, however arising, to pursue the buyer for such amount.

## (g) Failure to collect purchases

Where purchases are not collected within seven calendar days from the date of the sale, whether or not payment has been made, we shall be permitted to remove the property to a third party warehouse at the buyer's expense, and only release the items after payment in full has been made of removal, storage, handling, insurance and any other costs incurred, together with payment of all other amounts due to us.

## 5. EXTENT OF PROPWORX LIABILITY

Neither the seller, Propworx, nor any of our officers, employees or agents, are responsible for the correctness of any statement of whatever kind concerning any lot, whether written or oral, nor for any other errors or omissions in description or for any faults or defects in any lot. Neither the seller, Propworx, our officers, employees or agents, give any representation, warranty or guarantee, or assume any liability of any kind in respect of any lot with regard

to merchantability, fitness for a particular purpose, description, size, quality, condition, attribution, authenticity, rarity, importance, medium, provenance, exhibition history, literature or historical relevance. Except as required by local law, any warranty of any kind whatsoever is excluded by this paragraph.

## 6. BUYER'S REMEDIES.

This section sets forth the sole and exclusive remedies of Buyer in conformity with Sections 5 ("Extent of Propworx Liability") herein, and is expressly in lieu of any other rights or remedies which might be available to Buyer by law. The Buyer hereby accepts the benefit of the consignor's warranty of title and any other representations and warranties made by the consignor for the Buyer's benefit. In the event that Buyer proves in writing to Propworx' satisfaction that there was a breach of the consignor's warranty of title concerning a lot purchased by Buyer, Propworx shall refund the Purchase Price (including any premiums, taxes, or other amounts paid or due to Propworx). The rights and remedies provided herein are for the original Buyer only and they may not be assigned or relied upon by any transferee or assignee under any circumstances. Lots containing ten or more items are not returnable under any circumstances.

The exercise of rights under this Section 6 must be made, if at all, within thirty (30) days of the date of sale.

## 7. COPYRIGHT

The copyright in all images, illustrations and written material produced by or for Propworx relating to a lot including the contents of this catalog, is and shall remain at all times the property of Propworx and shall not be used by the buyer, nor by anyone else, without our prior written consent. Propworx, and the seller make no representation or warranty that the buyer of a property will acquire any copyright or other reproduction rights in it.

## 8. HEADINGS

Headings are for convenience only and shall not be used to interpret the substantive sections to which they refer.

## 9. SEVERABILITY

If any part of these Conditions of Sale is found by any court to be invalid, illegal or unenforceable, that part shall be discounted and the rest of the conditions shall continue to be valid to the fullest extent permitted by law.

## 10. LAW AND JURISDICTION

The rights and obligations of the parties with respect to these Conditions of Sale, the conduct of the auction and any matters connected with any of the foregoing shall be governed and interpreted by the laws of the state of California. By bidding at auction, whether present in-person or by agent, by written bid, telephone or other means, the buyer shall be deemed to have submitted, for the benefit of Propworx, to the exclusive jurisdiction of the courts of Los Angeles, California, and (if applicable) of the federal courts sitting in California.

## 11. ENTIRE AGREEMENT

These Conditions of Sale constitute the entire agreement between the parties together with the terms and conditions contained in the Registration Form. They may not be amended, modified or superseded except in a signed writing executed by all parties. No oral or written statement by anyone employed by Propworx or acting as agent or representative of Propworx may amend, modify, waive or supersede the terms herein unless such amendment, waiver or modification is contained in a writing signed by all parties. If any part of these Conditions of Sale are for any reason deemed invalid or enforceable, the remaining portions shall remain fully enforceable without regard to the invalid or unenforceable provisions.