

COSTUMES: PORTER - TELDY - ATLANTIS UNIFORMS



Lot 282

ALISON PORTER'S DUTY UNIFORM FROM "WHISPERS"

Black uniform worn by Dr. Alison Porter in the Atlantis Season Five episode, "Whispers". Includes Atlantis and US flag patches. No size available.

\$ 200 - \$ 400



Lot 283

ANNE TELDY'S DUTY UNIFORM FROM "WHISPERS"

Black uniform worn by Major Anne Teldy in the Atlantis Season Five episode, "Whispers". Includes Atlantis and US flag patches. No size available.

\$ 200 - \$ 400



Lot 284

ATLANTIS SECURITY DUTY UNIFORM

Black uniform worn by a member of the Atlantis security team. Includes Atlantis and US flag patches. Jacket size 46. Pants size XL. T-shirt size L. Shoe size 10.5.

\$ 200 - \$ 400



Lot 285

ATLANTIS SECURITY DUTY UNIFORM

Black uniform worn by a member of the Atlantis security team. Includes Atlantis and US flag patches. Jacket size 46. Pants size M. T-shirt size M.

\$ 200 - \$ 400

COSTUMES: ATLANTIS UNIFORMS - GENII



Lot 286

ATLANTIS MILITARY DUTY UNIFORM

Gray uniform worn by a member of the Atlantis military team. Includes Atlantis and US flag patches. No size for jacket. Pants size M/30. T-shirt size M.

\$ 200 - \$ 400



Lot 287

ATLANTIS RESCUE JUMPSUIT FROM "SEARCH AND RESCUE"

Jumpsuit worn by a member of the Atlantis rescue team in Season Five's "Search and Rescue". Size 44M.

\$ 100 - \$ 200



Lot 288

GENII FIELD CAPTAIN UNIFORM FROM "HARMONY"

Uniform worn by a Genii field captain in the Atlantis Season Four episode, "Harmony". Jacket size 42. T-shirt size S. Pants size 30W.

\$ 200 - \$ 400



Lot 289

JERRY PENACOLI'S GENII UNIFORM FROM "HARMONY"

Genii uniform worn by entertainer Jerry Penacoli in his cameo appearance in the Atlantis Season Four episode, "Harmony". Jacket size 44T. Pants size 33/29.

\$ 100 - \$ 200

LOTS 286 - 289



Lot 290

GENII DEAD SOLDIER UNIFORM FROM "HARMONY"

Genii uniform worn by a dead soldier in the Atlantis Season Four episode, "Harmony". Jacket size 40. Pants size 36.

\$ 100 - \$ 200



Lot 291

GENII STUNT SOLDIER FROM "HARMONY"

Stunt version of a Genii soldier from the Atlantis Season Four episode, "Harmony". No size for jacket. Pants size 36.

\$ 100 - \$ 200



Lot 292

GENII SOLDIER UNIFORM

Uniform worn by a Genii soldier in Atlantis. Jacket size 40. Pants size 38.

\$ 100 - \$ 200



Lot 293

KOLYA'S GENII UNIFORM FROM "REMNANTS"

Acastus Kolya's Genii uniform, worn when he appears as a vision to Sheppard in the Atlantis Season Five episode, "Remnants". No size for Jacket or pants. T-shirt size XXL.

\$ 200 - \$ 400

COSTUMES: GENII - DR. LEE



Lot 294

KOLYA'S OUTFIT FROM "THE BROTHERHOOD"

Black cotton trench coat, taffeta vest and wool pants worn by Acastus Kolya in the Atlantis Season One episode, "The Brotherhood". No size available.

\$ 100 - \$ 200



Lot 295

COWEN'S GENII UNIFORM

Genii uniform worn by Cowen in the Atlantis Season One episodes "Underground" and "The Storm". Jacket size 42R. No size for pants.

\$ 200 - \$ 400



Lot 296

LADON RADIM'S UNIFORM

Genii uniform worn by Ladon Radim in Atlantis. Jacket size 40. Undershirt size M. Pants size 32.

\$ 100 - \$ 200



Lot 297

DR. LEE'S HAWAIIAN OUTFIT FROM "OUTCAST"

Ukulele and palm tree Hawaiian shirt with brown cotton pants, worn by Dr. Lee when he is interrupted from his vacation in the Atlantis Season Four episode "Outcast".

\$ 100 - \$ 200

LOTS 294 - 297

COSTUMES: JEANNIE MILLER - AURORA UNIFORMS



Lot 298

JEANNIE MILLER'S HOUSE DRESS FROM "MILLER'S CROSSING"

House dress with cooking apron, worn by Jeannie Miller in the opening scenes of the Atlantis Season Four episode "Miller's Crossing". Blouse size 8. Skirt size 9/10. Shoe size 8.5.

\$ 100 - \$ 200



Lot 299

AURORA CAPTAIN UNIFORM

Uniform worn by the Aurora captain in the Atlantis Season Two episode, "Aurora". Includes communicator pin and wrist cuffs. Shirt size 44.

\$ 200 - \$ 400



Lot 300

TREBAL'S AURORA UNIFORM

Uniform worn by the Wraith disguised as First Officer Trebal in the Atlantis Season Two episode, "Aurora". Includes communicator pin and wrist cuffs. No size available.

\$ 200 - \$ 400



Lot 301

AURORA CREWMAN UNIFORM

Uniform worn by an Aurora crewman in the Atlantis Season Two episode, "Aurora". Includes communicator pin, belt and stunner holster. Jacket size 40. No size for pants.

\$ 200 - \$ 400

COSTUMES: AURORA UNIFORMS



Lot 302
AURORA CREWMAN UNIFORM

Uniform worn by an Aurora crewman in the Atlantis Season Two episode, "Aurora". Includes communicator pin, belt and stunner holster. Pants size 36.

\$ 200 - \$ 400



Lot 303
AURORA BRIDGE OFFICER UNIFORM

Uniform worn by a male Aurora bridge officer in the Atlantis Season Two episode, "Aurora". Includes communicator pin, belt and wrist wraps. Pants size 34.

\$ 200 - \$ 400



Lot 304
AURORA BRIDGE OFFICER UNIFORM

Uniform worn by a male Aurora bridge officer in the Atlantis Season Two episode, "Aurora". Includes communicator pin, belt and wrist wraps. Pants size 34. Shirt size 40.

\$ 200 - \$ 400



Lot 305
AURORA FEMALE OFFICER UNIFORM

Uniform worn by a female Aurora officer in the Atlantis Season Two episode, "Aurora". Includes communicator pin. Pants size 32.

\$ 200 - \$ 400

LOTS 302 - 305

COSTUMES: AURORA UNIFORMS - WRAITH



Lot 306
AURORA FEMALE OFFICER UNIFORM

Uniform worn by a female Aurora officer in the Atlantis Season Two episode, "Aurora". Includes communicator pin. Pants size 32.

\$ 200 - \$ 400



Lot 307
PUNK WRAITH COSTUME FROM "VEGAS"

Change 2 costume worn by the Punk Wraith as he blends in with humans in the alternate reality Atlantis episode, "Vegas". Shirt size M. Pants size 34/32. No size for jacket.

\$ 100 - \$ 200



Lot 308
PUNK WRAITH COSTUME FROM "VEGAS"

Change 1 costume worn by the Punk Wraith as he blends in with humans in the alternate reality Atlantis episode, "Vegas". Shirt size M. Pants size 32/34. No size for jacket.

\$ 100 - \$ 200



Lot 309
MICHAEL'S COSTUME FROM "ALLIES" AND "NO MAN'S LAND"

Wraith costume worn by Michael in the Atlantis episodes "Allies" and "No Man's Land". No size for costume. Shoe size 44.

\$ 400 - \$ 600

LOTS 306 - 309

COSTUMES: WRAITH

138



Lot 310
MICHAEL'S COSTUME FROM "THE KINDRED"

Costume worn by Michael Kenmore in the Atlantis Season Four two-part episode, "The Kindred", when he orchestrates the capture of Teyla. No size available.

\$ 200 - \$ 400



Lot 311
WRAITH KEEPER COSTUME FROM "RISING"

Costume worn by the Wraith Keeper, the first Wraith female revealed, in the Atlantis pilot episode. No size for outfit. Shoe size 9.5.

\$ 200 - \$ 400



Lot 312
"KENNY THE WRAITH" COSTUME FROM "THE QUEEN"

Costume worn by Kenny the Wraith in the Atlantis Season Five episode "The Queen". Jacket size 40-42. Tunic size 38.

\$ 400 - \$ 600



Lot 313
WRAITH COMMANDER COSTUME FROM "THE QUEEN"

Costume worn by the Wraith Commander in the Atlantis Season Five episode, "The Queen". Tunic and trenchcoat size 44. Pants size 36.

\$ 400 - \$ 600

LOTS 310 - 313

COSTUMES: WRAITH



Lot 314

TODD THE WRAITH'S COSTUME

Costume worn by Todd the Wraith in Atlantis. Robe and trench coat size 40.

\$ 600 - \$ 800



Lot 315

"BOB THE WRAITH" SQUIBBED VEST FROM "THE SIEGE, PART 1"

Squibbed vest worn by Bob the Wraith as he is killed by Sheppard in the Atlantis Season One episode, "The Siege, Part 1". No size available.

\$ 100 - \$ 200



Lot 316

"JIMMY THE WRAITH" COSTUME FROM SEASONS FOUR AND FIVE

Costume worn by Jimmy the Wraith in the fourth and fifth seasons of Stargate Atlantis. Duster jacket size 42. Pants size 32. Shoes size 10.

\$ 400 - \$ 600



Lot 317

PUNK WRAITH COSTUME FROM "VEGAS"

Bloodied costume worn by the Punk Wraith in the Atlantis Season Five episode, "Vegas". Jeans size 32/24.

\$ 100 - \$ 200

LOTS 314 - 317

COSTUMES: TRAVELERS - NEEVA

140



Lot 318

TRAVELER BRIDGE CREWMAN UNIFORM

Uniform worn by a Traveler bridge crewmember in Season Four of Atlantis. Vest size 46. Trousers size 44. No size for jacket.

\$ 300 - \$ 500



Lot 319

TRAVELER CREWMAN UNIFORM

Uniform worn by a Traveler crew member in Season Four of Atlantis. Vest and jacket size 46. Trousers size 36.

\$ 300 - \$ 500



Lot 320

LARRIN'S UNIFORM

Uniform worn by the Traveler convoy leader, Larrin, in the Atlantis Season Four episodes "Travelers" and "Be All My Sins Remember'd". No size available.

\$ 300 - \$ 500



Lot 321

NEEVA'S BLOODY KELLER UNIFORM FROM "IDENTITY"

Bloody uniform worn by Neeva while in the body of Keller in the Atlantis Season Five episode, "Identity". No size for uniform. Shoe size 9.5.

\$ 200 - \$ 400

LOTS 318 - 321

COSTUMES: MARA - DAVE SHEPPARD - AVA DIXON - RAKAI



Lot 322

MARA'S COSTUME FROM "THE TOWER"

Satin gown worn by Mara, daughter of the lord protector, in the Atlantis Season Two episode "The Tower". No size available.

\$ 200 - \$ 400



Lot 323

DAVE SHEPPARD'S COSTUME FROM "OUTCAST"

Costume worn by Dave Sheppard, the brother of John Sheppard, to their father's wake in the Atlantis Season Four episode, "Outcast". Dress shirt size M. Belt size 36/92. Shoe size 10.5.

\$ 100 - \$ 200



Lot 324

AVA DIXON'S COSTUME FROM "OUTCAST"

Costume worn by the Replicator Ava Dixon in the Atlantis Season Four episode "Outcast". Blouse size XS/TP. Skirt size 0. Shoes size 6.5.

\$ 100 - \$ 200



Lot 325

RAKAI'S COSTUME FROM "REUNION"

Costume worn by the Satedan Rakai in the Atlantis Season Four episode, "Reunion". No size available.

\$ 200 - \$ 400

LOTS 322 - 325

COSTUMES: TYRE - ARA - PEGASUS REPLICATORS



Lot 326

TYRE'S COSTUME FROM "BROKEN TIES"

Costume worn by Ronon's ex-friend, the Satedan Tyre, in the Atlantis Season Five episode, "Broken Ties". No size available.

\$ 100 - \$ 200



Lot 327

ARA'S COSTUME FROM "REUNION"

Costume worn by the Satedan Ara in the Atlantis Season Four episode, "Reunion". Shirt and shorts size M. Shoes size 9. No size available for trench coat or miniskirt.

\$ 100 - \$ 200



Lot 328

ERUS'S COSTUME FROM "PROGENY"

Costume worn by Erus, Niam's Asuran assistant, in the Atlantis Season Three episode "Progeny". No size available.

\$ 100 - \$ 200



Lot 329

ARRIA'S COSTUME FROM "PROGENY"

Costume worn by Arria, Niam's Asuran assistant, in the Atlantis Season Three episode "Progeny". No size available.

\$ 100 - \$ 200

LOTS 326 - 329

COSTUMES: PEGASUS REPLICATORS - KANAAN



Lot 330

NIAM'S COSTUME FROM "PROGENY"

Costume worn by Niam, member of the Asuran underground, in the Atlantis Season Three episodes "Progeny", "The Real World" and "The Return". No size available.

\$ 300 - \$ 500



Lot 331

OBEROOTH'S COSTUME

Costume worn by the Asuran Replicator leader, Oberoth, in the Atlantis Season Four episodes "Adrift" and "Lifeline". No size available.

\$ 300 - \$ 500



Lot 332

KANAAN'S COSTUME

Costume worn by Teyla's husband Kanaan in his appearances in Season Five's "The Kindred" and "Search and Rescue". No size available for costume. Shoes size 11.

\$ 300 - \$ 500

LOTS 330 - 332

COSTUMES: WILLA - LUCIUS LAVIN - DAEDALUS VARIATIONS

144



Lot 333

WILLA'S COSTUME FROM "IRRESISTIBLE"

Flower costume worn by Willa, one of Lucius Lavin's buxom wives, in the Atlantis Season Three episode, "Irresistible". No size for costume. Shoe size 39.

\$ 100 - \$ 200



Lot 334

LUCIUS LAVIN'S COSTUME FROM "IRRESISTIBLE"

Costume worn by Lucius Lavin in his first appearance in the Atlantis Season Three episode "Irresistible". No size available.

\$ 100 - \$ 200



Lot 335

INTRUDER UNIFORM FROM "THE DAEDALUS VARIATIONS"

Military uniform worn by one of the alien invaders in the Atlantis Season Five episode, "The Daedalus Variations". Features armored chest and back plate, armored trousers, jacket with rubber sleeves, shoulder pads, bicep armor cuffs, elbow armor cuffs, bronze motorcycle gloves, knee pads, boot covers, belt and gun holster. No size available.

\$ 600 - \$ 800

LOTS 333 - 335

COSTUMES: SODAN - PEGASUS REPLICATORS



Lot 336

JOLAN'S SODAN WARRIOR COSTUME

Armored costume worn by the Sodan Jolan, the warrior who trained Mitchell to fight to the death, in Season Nine of SG-1. Includes chest and shoulder armor, gauntlets, vest, trousers, belt and greaves. Belt size 32.

\$ 400 - \$ 600



Lot 337

SODAN WARRIOR COSTUME

Armored costume worn by a Sodan Warrior in the ninth season of SG-1. Includes chest and shoulder armor, gauntlets, vest, trousers, belt and greaves. Trousers size 32.

\$ 400 - \$ 600



Lot 338

REPLICATOR SOLDIER COSTUME

Costume worn by a member of the Asuran Replicator guard in the third and fourth seasons of Atlantis. Includes armored jacket, unitard shirt and pants, belt gauntlets and greaves. Armored jacket and unitard shirt size 42. Leather belt size 34+.

\$ 400 - \$ 600



Lot 339

REPLICATOR SOLDIER COSTUME

Costume worn by a member of the Asuran Replicator guard in the third and fourth seasons of Atlantis. Includes armored jacket, unitard shirt and pants, belt gauntlets and greaves. Trousers size 34. Shirt size 42. Leather belt size 34+.

\$ 400 - \$ 600

COSTUMES: WRAITH DRONE - SATEDAN SOLDIER



Lot 340

WRAITH DRONE COSTUME

Wraith drone costume seen throughout all five seasons of Atlantis. Includes undershirt and pants, mask with wig, chest and back armor, gauntlets, chaps, grieves and boots. Size 39-41.

\$ 1,000 - \$ 1,500



Lot 341

WRAITH DRONE COSTUME

Wraith drone costume seen throughout all five seasons of Atlantis. Includes undershirt and pants, mask with wig, chest and back armor, gauntlets, chaps, grieves and boots. Leotard size 46.

\$ 1,000 - \$ 1,500



Lot 342

SATEDAN SOLDIER COSTUME

Armored Satedan soldier costume from seasons two and three of Atlantis. Includes armored chest and back plating, stomach armor, belt, jacket and trousers No size available.

\$ 400 - \$ 600



Lot 343

RONON'S SATEDAN SOLDIER COSTUME

Costume worn by Ronon Dex in his flashbacks in the Atlantis episodes "Runner" and "Sateda". Includes armored chest and back plating, stomach armor, belt, jacket and trousers No size available.

\$ 600 - \$ 800

LOTS 340 - 343

COSTUMES: ORI WARRIOR



Lot 344

ORI WARRIOR COSTUME

Costume worn by a member of the Ori army. Includes resin helmet, tunic with vacuum-formed parts, gauntlets and gloves, greaves, boots and villager undergarments. Tunic size 46.

\$ 800 - \$ 1,200



Lot 345

ORI WARRIOR COSTUME

Costume worn by a member of the Ori army. Includes resin helmet, tunic with vacuum-formed parts, gauntlets and gloves, greaves, boots and villager undergarments. Tunic size 44.

\$ 800 - \$ 1,200



Lot 346

TOMIN'S ORI WARRIOR COSTUME

Costume worn by Tomin as commander of an Ori battalion. Includes resin helmet, tunic with vacuum-formed parts, collar, cape, gauntlets and gloves, greaves, boots and villager undergarments. Tunic size 42. Pants size 36.

\$ 1,000 - \$ 1,500

LOTS 344 - 346

COSTUMES: JAFFA WARRIOR - "SATEDA" WRAITH



Lot 347
JAFFA WARRIOR COSTUME (SIZE 344)

A complete Jaffa suit of armor, including undergarments, collar, chest and back plating, vest, gauntlets, belt and belt buckle, chainmail skirt, greaves and boots. Trousers size 40. Jacket size 44. Shoes size 10.5.

\$ 2,000 - \$ 3,000



Lot 348
JAFFA WARRIOR COSTUME (SIZE 36)

A complete Jaffa suit of armor. Includes Undergarments, collar, chest and back plating, vest, gauntlets, belt and belt buckle, chainmail skirt, greaves and boots. Trousers size 34/28. Jacket size 36. Shoes size 9.5.

\$ 2,000 - \$ 3,000



Lot 349
"BIG WRAITH" COSTUME FROM "SATEDA"

Costume worn by the Big Wraith who combats Ronon at the end of the Season Three Atlantis episode, "Sateda". No size available.

\$ 600 - \$ 800

COSTUMES: SUPER SOLDIER



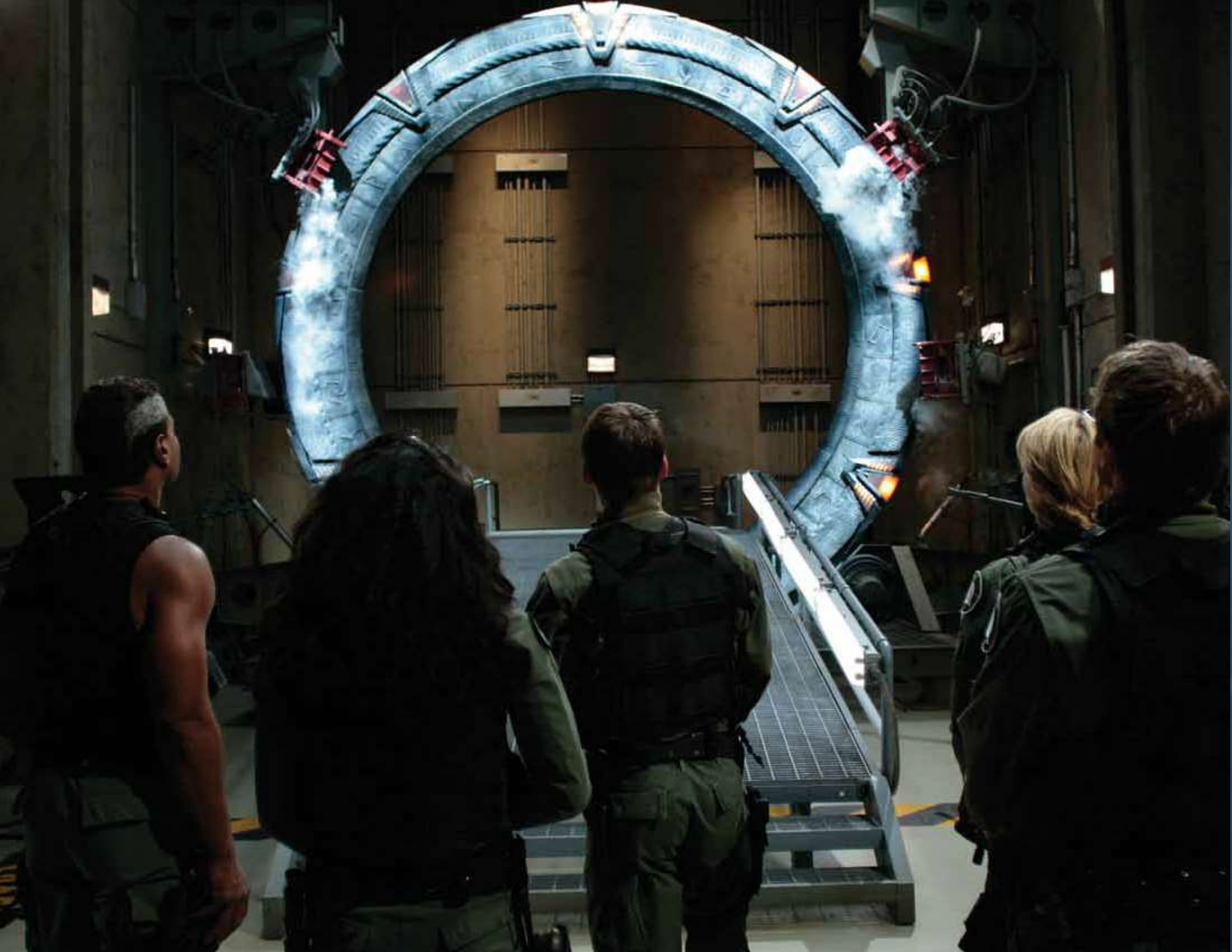
Lot 350

SUPER SOLDIER ARMOR

A set of armor and a skin-tight neoprene suit for the Super Soldier, or Kull Warrior, which was introduced in Season Seven of SG-1 as Anubis's replacement for the unreliable Jaffa. Includes both a neoprene and spandex hood, neoprene gloves, motorcycle boots, neoprene collar, plastic chest armor, leather shoulder panels with hose details, plastic thigh and shin armor, a fiberglass helmet and leather gauntlets with integrated elbow and hand armor. Each arm features a micro plasma weapon blaster which lights.

\$ 2,000 - \$ 3,000

LOT 350





PROPS

PROPS: JACK O'NEILL



Lot 351

O'NEILL'S IDENTIFICATION CARD

Laminated and signed ID card carried by Jack O'Neill in SG-1, featured in the Season Seven episode "Fragile Balance". Measures 4in x 2.75in.

\$ 200 - \$400



Lot 353

O'NEILL'S PARATROOPER PHOTO

Photo of Jack O'Neill as a camouflaged paratrooper, seen in numerous SG-1 episodes, particularly Season Seven's "Fragile Balance". Measures 4.5in x 6in.

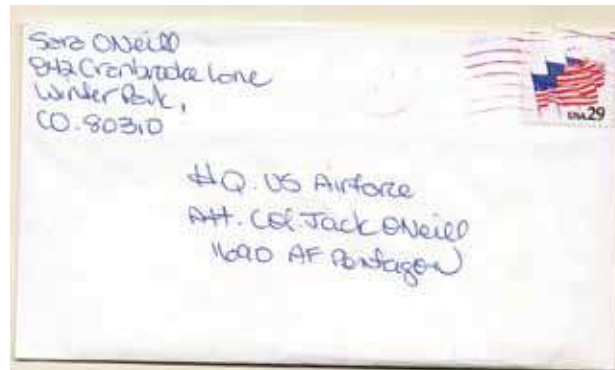
\$ 100 - \$ 200

Lot 352

O'NEILL'S LETTER FROM SARA

White envelope with faux letter written by Sara O'Neill to Jack while he was stationed at the Pentagon during their marriage. Sheet of paper inside the envelope has been left blank. A duplicate Jack sorts through this letter, among other personal items, in the locker room in the SG-1 Season One episode "Cold Lazarus". Envelope measures 6.5in x 3.5in.

\$ 100 - \$ 200



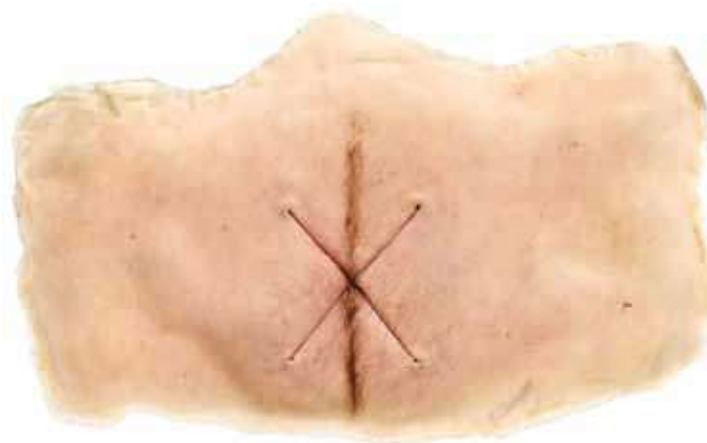
PROPS: JACK O'NEILL

Lot 354

O'NEILL'S FAMILY PHOTOS

Four color photographs of Jack O'Neill with his wife Sarah and son Charlie. Charlie's death was key to the storyline in the feature film (though he was then named "Tyler"), and this was carried throughout the series, specifically the SG-1 Season One episode "Cold Lazarus". It is this episode for which these photos were made. Photos measure 7in x 5in.

\$ 100 - \$ 200



355

Lot 355

O'NEILL'S JAFFA POUCH FROM "HATHOR"

Foam rubber appliance made to represent Jack O'Neill's stomach after Hathor converts him into a Jaffa, from SG-1 Season One's "Hathor". Measures 20in x 12.25in.

\$ 400 - \$ 600

Lot 356

O'NEILL'S SILVER STAR

Framed silver star displayed in General Jack O'Neill's office. Medal is bronze with a gold frame. Measures 7.75in x 10.5in x 1.25in.

\$ 400 - \$ 600



153

LOTS 354 - 356

PROPS: JACK O'NEILL



Lot 357

O'NEILL'S CAMPAIGN MEDALS

"Liberation of Kuwait" and "Southeast Asia Service" campaign medals displayed in General Jack O'Neill's office. Display measures 11.5in x 10.75in x 1in.

\$ 400 - \$ 600



Lot 359

O'NEILL'S AIR FORCE ACADEMY GRADUATION PLAQUE

Air Force Academy Graduation plaque which hung in General Jack O'Neill's office. Prop is made of wood and is engraved. Measures 7.25in x 9.25in x 1.25in.

\$ 400 - \$ 600



Lot 358

O'NEILL'S AIR FORCE MEDALS

Frame of three Air Force medals awarded to Jack O'Neill, displayed in the general's office. Display measures 13.25in x 9.75in x 1.25in.

\$ 400 - \$ 600

LOTS 357 - 359

PROPS: JACK O'NEILL

Lot 360

O'NEILL'S AMBER-TINT SUNGLASSES

Cebe sunglasses worn by Jack O'Neill during off-world missions with SG-1. Prop features black plastic frames, plastic earpieces and leather side shades, as well as an elastic strap. Glasses measure 5.75in x 5.75in x 2.25in open. Case measures 3in x 6.25in x 1.25in.

\$ 600 - \$ 800



360

Lot 362

O'NEILL'S BRIGADIER GENERAL NAME PLATE

Leather name plate worn by Jack O'Neill in Season Eight of SG-1. Features a Master Parachutist badge and Space Command badge. Measures 4in x 2.25in.

\$ 100 - \$ 200



361

Lot 361

O'NEILL'S GREEN-TINT SUNGLASSES

Sunglasses worn by Jack O'Neill during off-world missions. Prop features black plastic frames, plastic earpieces and leather side shades, as well as an elastic strap. Glasses measure 5.75in x 6in x 2.25in open. Gray cloth glasses pouch included. Pouch measures 3.75in x 8in.

\$ 600 - \$ 800

PROPS: JACK O'NEILL



Lot 363

O'NEILL'S UNIFORM NAME PLATE

Leather name plate worn by Jack O'Neill in SG-1.
Measures 4in x 2.25in.

\$ 100 - \$ 200



Lot 364

O'NEILL'S BAYONET AND SHEATH

Black metal bayonet and plastic sheath used by Jack O'Neill in SG-1. Manufactured by Buck. Knife measures 12in x 1.25in x 3.25in. Sheath measures 13in x 2.5in x 2.5in.

\$ 200 - \$ 400



Lot 365

O'NEILL'S TORCHLIGHTER

Jack O'Neill's working metal torch lighter with compass. Includes aluminum case. Measures 3in x 1.25in.

\$ 100 - \$ 200

PROPS: JACK O'NEILL

Lot 366

O'NEILL'S PHONE FROM "LOST CITY"

Cell phone used by Jack O'Neill in the opening scene of *SG-1*'s Season Seven finale, "Lost City". Functionality is unverified. Measures 5.25in x 2in x 1.25in. Antenna extends to 3.5in.

\$ 100 - \$ 200



Lot 367

O'NEILL'S DOG TAGS

Metal dog tags worn by Jack O'Neill in *SG-1*. Both tags measure 2in x 1.25in. Chains measure 24in and 4in long.

\$ 400 - \$ 600



Lot 368

O'NEILL'S DOG TAGS

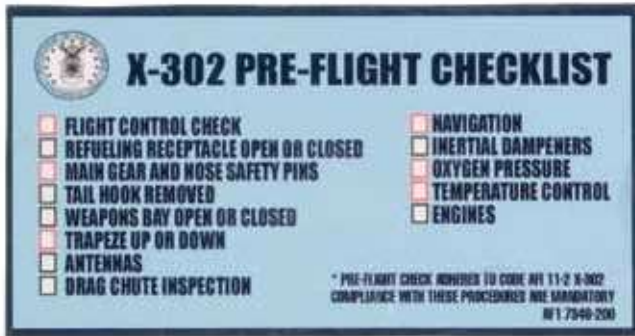
Metal dog tags worn by Jack O'Neill in *SG-1*. Both tags measure 2in x 1.25in. Chains measure 24in and 4in long.

\$ 400 - \$ 600



PROPS: JACK O'NEILL

158



Lot 369

O'NEILL'S X-302 PRE-FLIGHT CHECKLIST

Pre-flight checklist used by Jack O'Neill in the SG-1 Season Six episode "Redemption, Part 1", before he and Carter attempt to make contact with the Asgard in the X-302 interceptor. Card is laminated and measures 4.5in x 2.5in.

\$ 100 - \$ 200



Lot 371

O'NEILL'S MONOCULAR

Metal monocular used by Jack O'Neill in SG-1. Includes a velvet drawstring pouch. Prop measures 3.25in x .75in.

\$ 100 - \$ 200

Lot 370

O'NEILL'S BUSINESS CARD

Business card belonging to Jack O'Neill. Jack hands a card of this type to a film studio worker to track down a license plate in the SG-1 Season Five episode, "Wormhole X-Treme!" Card measures 3.5in x 2in.

\$ 100 - \$ 200



LOTS 369 - 371

PROPS: JACK O'NEILL



Lot 372

O'NEILL'S PERISCOPE

Periscope used by Jack O'Neill in *SG-7*. Prop extends 6in and is made from metal, brass and plastic. Measures 10in x 1in x 1in.

\$ 100 - \$ 200



Lot 373

O'NEILL'S DRESS UNIFORM RIBBON BARS

Ribbon bars worn by Jack O'Neill with his dress blues in *SG-7*. Measures 4.25in x 2.75in x .5in.

\$ 100 - \$ 200

LOTS 372 - 373

PROPS: SAMANTHA CARTER

Lot 374

CARTER'S DOG TAGS

Metal dog tags worn by Samantha Carter in SG-1. Both tags measure 2in x 1.25in. Chains measure 24in and 4in long.

\$ 400 - \$ 600



Lot 376

CARTER'S WATCH

Suunto watch worn by Samantha Carter throughout SG-1. Functionality is unverified. Measures 5.5in x 2.5in x 2in.

\$ 100 - \$ 200

Lot 375

CARTER'S CEL PHONE

Silver and red Cellular phone with extending antenna, used by Samantha Carter throughout the SG-1 Season Eight episode, "Covenant". Device functions and measures 3in x 2in x 1in.

\$ 100 - \$ 200



375

LOTS 374 - 376

PROPS: SAMANTHA CARTER



Lot 377

CARTER'S WATCH

Suunto watch worn by Samantha Carter in SG-1. Watch is plastic with a rubber watchband. Functionality unverified. Measures 5.25in x 2.5in x 2in.

\$ 100 - \$ 200



Lot 378

CARTER'S SHOOTING GLASSES

Military-issue shooting glasses worn by Samantha Carter in SG-1. Frames are plastic. Includes an extra set of lenses and earpieces, and a plastic case. Glasses measure 6in x 5.5in x 2.25in. Case measures 6.75in x 2.75in x 3.25in.

\$ 100 - \$ 200



Lot 379

CARTER'S SUNGLASSES

Cebe sunglasses worn by Samantha Carter in SG-1. Features plastic metal frames with adjustable earpieces, and a plastic case. Glasses measure 5.5in x 4.25in x 2in open. Case measures 6.5in x 3.25in x 1.75in.

\$ 400 - \$ 600

PROPS: SAMANTHA CARTER

Lot 380

CARTER'S SUNGLASSES

Cebe sunglasses worn by Samantha Carter in *SG-1*. Features plastic metal frames with adjustable earpieces, and a plastic case. Glasses measure 5.5in x 4.25in x 2in open. Case measures 6.5in x 3.25in x 1.75in.

\$ 400 - \$ 600



Lot 381

CARTER'S STUNT KNIFE

Rubber folding knife wielded by Samantha Carter in *SG-1*. Measures 8.5in x 1.5in x .5in.

\$ 100 - \$ 200



Lot 382

CARTER'S HERO KNIFE

IMetal diving knife with dull blade and plastic hilt, wielded by Samantha Carter in *SG-1*. Measures 10.75in x 1in x 2.5in.

\$ 100 - \$ 200



PROPS: SAMANTHA CARTER

Lot 383

CARTER'S FOLDING KNIFE

Hero folding knife wielded by Samantha Carter in SG-1. Knife is made of stainless steel and features a serrated edge. Measures 8.5in x 1.5in x .5in while open.

\$ 100 - \$ 200



Lot 384

CARTER'S WRIST BAND

Braided wristband worn by Samantha Carter in SG-1. Band is made of tan thread with painted green edges with a BDU button closure. Measures 7.25in long.

\$ 100 - \$ 200



Lot 385

CARTER'S RING

Gold ring belonging to Samantha Carter and used in SG-1. Inside diameter measures .625in.

\$ 200 - \$ 400

LOTS 383 - 385

PROPS: SAMANTHA CARTER - DANIEL JACKSON



Lot 386

CARTER'S PATCHES

Screen-used patches with Velcro backing, worn by Samantha Carter in *SG-1*. *SG-1* team patch measures 4in. Earth patch measures 3.5in. Air Force patch measures 2.5in.

\$ 200 - \$ 400



388

Lot 388

DANIEL'S ROUND GLASSES

Round non-prescription glasses made by Ultima, worn by Daniel Jackson in *SG-1*. Glasses measure 5.5in x 5.25in x 1.75in open. Case measures 2.75in x 6.25in x 1.25in.

\$ 500 - \$ 700

Lot 387

CARTER'S MAJOR DRESS UNIFORM RIBBON BARS

Ribbon bars worn by Major Samantha Carter with her dress blues in *SG-1*. Measures 4.25in x 1.25in x .5in.

\$ 100 - \$ 200



PROPS: DANIEL JACKSON

Lot 389

DANIEL'S SQUARE GLASSES

Square non-prescription glasses made by Safilo Elasta, worn by Daniel Jackson in SG-1. Glasses measure 5.5in x 6in x 1.25in open. Case measures 2.25in x 6.25in x 1.25in.

\$ 500 - \$ 700



Lot 390

DANIEL'S CLIP-ON GLASSES

Non-prescription glasses with clip-on sunglasses, worn by Daniel Jackson in SG-1. Glasses measure 5.25in x 5.5in x 2in. Case measures 3in x 6.25in x 1in.

\$ 500 - \$ 700



Lot 391

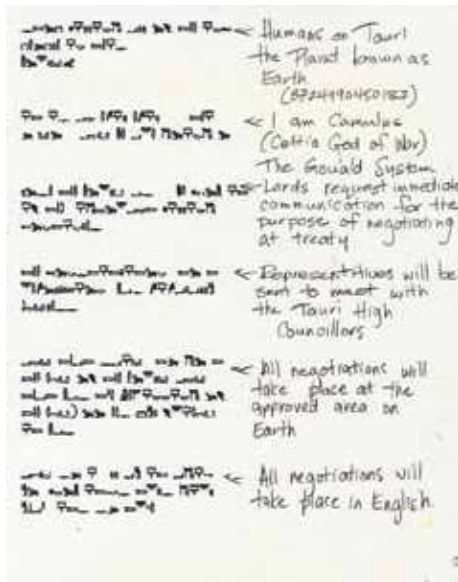
DANIEL'S GLYPH PAGES FROM "THE TORMENT OF TANTALUS"

A set of seven pages detailing the glyphs to dial Heliopolis, the planet to where Ernest Littlefield was sent in 1945. Daniel Jackson presented these pages to Catherine Langford in the SG-1 Season One episode "The Torment of Tantalus". With these print-outs Catherine realized that her fiancé might be alive on another world. Pages are printed on glossy photo paper. Each measures 8.5in x 11in.

\$ 400 - \$ 600



PROPS: DANIEL JACKSON



Lot 392

DANIEL'S TRANSLATION FROM "NEW ORDER"

Translation of a message from the Goa'uld Camulus by Daniel Jackson in the SG-1 Season Eight episode "New Order, Part 1". This prop was used in a scene between Jackson and Dr. Elizabeth Weir while they decided whether or not to allow the System Lords to Earth for a potential alliance. Page measures 8.5in x 11in.

\$ 100 - \$ 200



Lot 394

DANIEL'S JOURNAL

Daniel Jackson's leather-bound notebook filled with his notes, used throughout SG-1. Papers have been torn, dirtied and distressed by production. Measures 9.5in x 7.5in.

\$ 400 - \$ 600

Lot 393

DANIEL'S ORI GAUNTLET WEAPON

Functional Ori gauntlet weapon used by Daniel Jackson in the SG-1 Season Ten episode "Flesh and Blood". Daniel uses this weapon on a young Adria when she is distracted, allowing both he and Vala to escape from her warship. Gauntlet is made of leather with leather strap and buckle closures. A metal fork with Ori symbols is mounted on the back. Two-inch metal blades extend when a button is pushed in the palm. Measures 23in x 6.5in x 3.5in.

\$ 400 - \$ 600



LOTS 392 - 394

PROPS: DANIEL JACKSON

Lot 395

DANIEL'S DRIVERS LICENSE FROM "HOLIDAY"

Drivers license from Daniel Jackson's wallet, seen in the SG-1 Season Two episode, "Holiday". This license states his birthday as July 28, 1967, but the episodes "Forever in a Day" and "1969" establish his birthday as July 8, 1965. Drivers license measures 3in x 2in.

\$ 100 - \$ 200



Lot 396

DANIEL'S PSYCHIATRY BADGE FROM "THE CHANGELING"

Badge worn by the ascended Daniel Jackson while he exists in Teal'c's hallucination in the SG-1 Season Six episode, "The Changeling". Badge is laminated. Measures 3.5in x 4in with clip.

\$ 100 - \$ 200



Lot 397

DANIEL'S DEBIT CARD FROM "HOLIDAY"

Debit card used by Ma'chello, in the body of Daniel Jackson, to buy lunch for everyone at a Colorado Springs diner in the SG-1 Season Two episode "Holiday". Measures 3.5in x 2.25in.

\$ 100 - \$ 200



LOTS 395 - 397

PROPS: DANIEL JACKSON - TEAL'C



Lot 398

DANIEL'S EXCAVATION DIG PHOTO

A screen capture from the SG-1 Season Four episode "The First Ones", used as set dressing in Daniel's office in the later years of the series. Picture frame is made of wood, and measures 7.75in x 5.75in.

\$ 100 - \$ 200

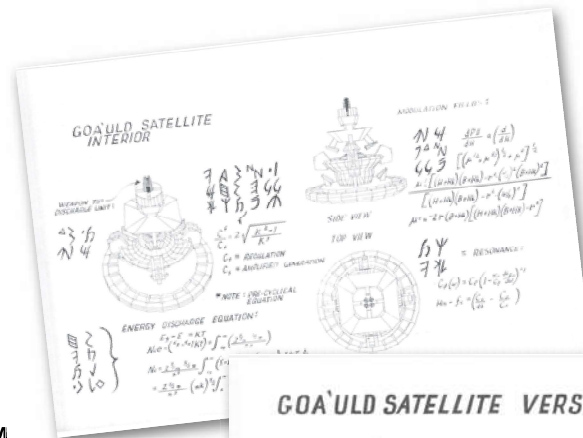


Lot 400

TEAL'C'S APOPHIS FIRST PRIME TATTOO

Rubber tattoo shaped into the symbol of Apophis, worn by Teal'c in the earlier seasons of SG-1. Measures 2.25in x 1.5in.

\$ 400 - \$ 600

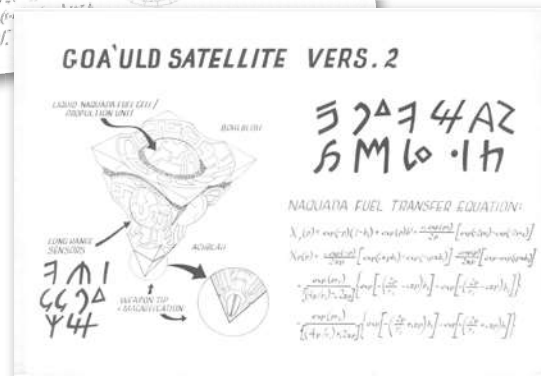


Lot 399

DANIEL'S AG-3 SCHEMATICS FROM "ABSOLUTE POWER"

Two pages of AG-3 schematics developed by Daniel Jackson in an hallucination in the SG-1 Season Four episode, "Absolute Power". Intent on harnessing the power of Goa'uld knowledge, the ascended Shifu presents Daniel with an alternate future where catastrophic events play out. Pages measure 36in x 24in.

\$ 200 - \$ 400



LOTS 398 - 400

Lot 401

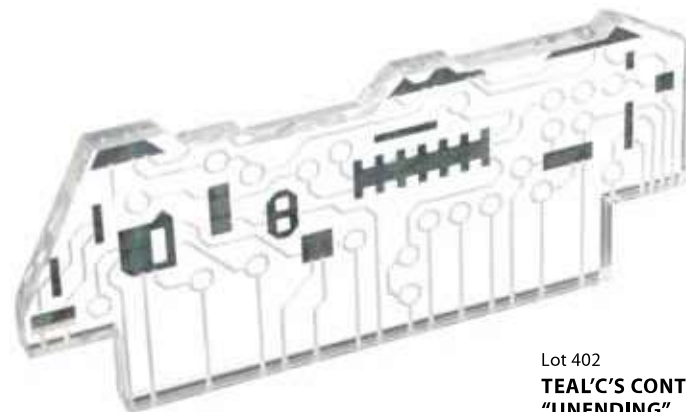
TEAL'C'S SUNGLASSES FROM "COLD LAZARUS"

Ray-Ban sunglasses worn by Teal'c in the opening scenes of the *SG-1* Season One episode, "Cold Lazarus". Glasses measure 5.75in x 5.5in x 2.25in open. Case measures 7in x 2.5in x 1.5in.

\$ 400 - \$ 600



401



Lot 402

TEAL'C'S CONTROL CRYSTAL FROM "UNENDING"

Alternate reality control crystal sent back in time with Teal'c to correct the past in the *SG-1* series finale, "Unending". Crystal is made of acrylic with simulated circuitry. Measures 4in x 1.75in x .25in.

\$ 200 - \$ 400



Lot 403

TEAL'C'S SODAN CLOAKING DEVICE

Sodan Cloaking device used by Teal'c in the *SG-1* Season Nine episodes "Uninvited" and "Arthur's Mantle". Features a brown leather armband with metal rivet detailing and a green jewel. Measures 5in x 4.75in. Leather straps are 15.5in and 16.5in long.

\$ 400 - \$ 600

PROPS: TEAL'C

Lot 404

TEAL'C'S PROSTHETIC CHEST PIECE

Prosthetic chest worn by Teal'c in scenes where his Goa'uld symbiote appeared from its pouch. Chest frame is made of fiberglass with silicone for the skin. Features a metal carrying handle. Measures 23.25in x 19in x 9.75in.

\$ 600 - \$ 800



Lot 405

TEAL'C'S FISHING HAT FROM "THE CURSE"

Tan hat worn by Teal'c when he begrudgingly agrees to go fishing with Jack in Minnesota in the *SG-1* Season Four episode "The Curse". Hat features two zippered pockets. Size XL.

\$ 400 - \$ 600



Lot 406

TEAL'C'S PATCHES

Screen-used patches with Velcro backing, worn by Teal'c in *SG-1*. *SG-1* team patch measures 4in. Air Force patch measures 2.5in.

\$ 200 - \$ 400

LOTS 404 - 406

PROPS: TEAL'C - CAMERON MITCHELL



Lot 407

TEAL'C'S PATCHES

Screen-used patches with Velcro backing, worn by Teal'c in *SG-1*. *SG-1* team patch measures 4in. Earth patch measures 3.5in.

\$ 200 - \$ 400



Lot 408

TEAL'C'S PATCHES

Screen-used patches with Velcro backing, worn by Teal'c in *SG-1*. *SG-1* team patch measures 4in. Earth patch measures 3.5in.

\$ 200 - \$ 400



Lot 409

MITCHELL'S SWORD FROM "CAMELOT"

Aluminum sword wielded by Cameron Mitchell and Valencia in the *SG-1* Season Nine episode, "Camelot". Valencia removes the sword from the stone in the center of her village and throws it to Mitchell so that he may battle a holographic knight. When Mitchell's fight against the hologram turned sour, Daniel disabled the Ancient technology governing the program before it could run Cam through with its sword. Sword measures 45.5in x 8in x 2in.

\$ 600 - \$ 800

LOTS 407 - 409

PROPS: CAMERON MITCHELL



Lot 410

MITCHELL'S AIR FORCE ID BADGE

Black leather wallet with Air Force ID badges used by Cameron Mitchell in the SG-1 Season Ten episode "Memento Mori" when he commandeers a civilian motorcycle. Wallet measures 5in x 6.5in open.

\$ 200 - \$ 400



Lot 412

MITCHELL'S WATCH

Suunto watch worn by Cameron Mitchell in seasons nine and Ten of SG-1. Watch functionality is unverified. Measures 5.5in x 2.5in x 2in.

\$ 100 - \$ 200

Lot 411

MITCHELL'S DOG TAGS

Metal dog tags worn by Cameron Mitchell in SG-1. Both tags measure 2in x 1.25in. Chains measure 23in and 4in long.

\$ 200 - \$ 400



PROPS: CAMERON MITCHELL



Lot 413

MITCHELL'S PATCHES

Screen-used patches with Velcro backing, worn by Cameron Mitchell in *SG-1*. *SG-1* team patch measures 4in. Earth patch measures 3.5in. Air Force patch measures 2.5in.

\$ 200 - \$ 400



Lot 414

MITCHELL'S PATCHES

Screen-used patches with Velcro backing, worn by Cameron Mitchell in *SG-1*. *SG-1* team patch measures 4in. Earth patch measures 3.5in. Air Force patch measures 2.5in.

\$ 200 - \$ 400



Lot 415

MITCHELL'S PATCHES

Screen-used patches with Velcro backing, worn by Cameron Mitchell in *SG-1*. *SG-1* team patch measures 4in. Earth patch measures 3.5in. Air Force patch measures 2.5in.

\$ 200 - \$ 400

LOTS 413 - 415

PROPS: VALA MAL DORAN - GEORGE HAMMOND

174



416

Lot 416

VALA'S PATCHES

Screen-used patches with Velcro backing, worn by Vala Mal Doran in SG-1. Patches measure 2.5in. and 2.75in.

\$ 200 - \$ 400



Lot 418

HAMMOND'S DRESS UNIFORM RIBBON BARS

Ribbon bars worn by George Hammond with his dress blues in SG-1. Measures 5.5in x 2.75in x .5in.

\$ 200 - \$ 400

Lot 417

HAMMOND'S WEDDING RING

Gold wedding ring worn by George Hammond throughout SG-1. Hammond's wife died of cancer before the inception of the Stargate program, according to Jack O'Neill in Season One's "Tin Man". The character, like his real life counterpart, died of a heart attack. Production immortalized Mr. Davis's contributions to the series by naming the sixth battle cruiser after his character. Ring measures .75in inside.

\$ 100 - \$ 200



417

LOTS 416 - 418

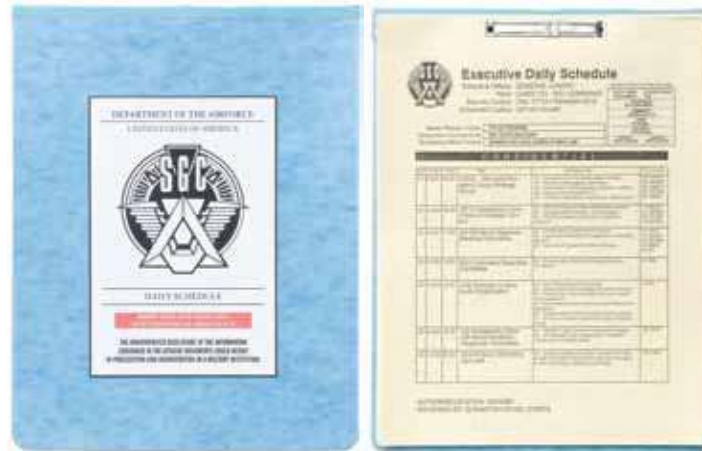
PROPS: GEORGE HAMMOND - HANK LANDRY - JANET FRAISER

Lot 419

HAMMOND'S PATCH SET

Patches and Rank Tape worn by George Hammond in the *SG-1* episodes "Lost City, Part 2" and "Prometheus Unbound". Hammond served as leader of the Stargate Command organization, a position he held with distinction for eight years before being transferred to Washington D.C. Name tag measures 4in x 2in. Cloth strip pair measures 3.5in x 1.5in each. Single cloth strip measures 5.25in x 1.75in.

\$ 200 - \$ 400



Lot 420

LANDRY'S SCHEDULE

Blue cardboard folder from Hank Landry's personals, used in *SG-1*. Includes paperwork detailing the schedule of the general. Landry was hand-picked by his friend, General Jack O'Neill, as his replacement for leader of Stargate Command. Features budget documents photocopied on yellow paper. Measures 9in x 11.5in.

\$ 100 - \$ 200



Lot 421

FRAISER'S WATCH

Silver and gold metal watch worn by Janet Fraiser in *SG-1*. Fraiser was Stargate Command's chief medical officer for nearly seven years until she was killed in the Season Seven episode "Heroes, Part 2". Manufactured by Jessica. Measures 5.75in x 1in.

\$ 100 - \$ 200

PROPS: JANET FRAISER

Lot 422

FRAISER'S DOG TAGS

Metal dog tags worn by Janet Fraiser in *SG-1*. Tags measure 2in x 1.25in. Chain measures 24in long.

\$ 200 - \$ 400



Lot 424

FRAISER'S UNIFORM GARRISON CAP

Dress uniform garrison cap worn by Janet Fraiser in *SG-1*. Features a major rank pin. Size 23.

\$ 100 - \$ 200

Lot 423

FRAISER'S DRESS UNIFORM RIBBON BARS

Ribbon bars worn by Janet Fraiser with her dress blues in *SG-1*. Measures 4.25in x 1.5in x .5in.

\$ 100 - \$ 200



PROPS: OTHER CHARACTERS

Lot 425

JONAS QUINN'S RING

Ring worn by Jonas Quinn in the SG-1 Season Six episode "Redemption, Part 1". Quinn joined SG-1 in the hopes of saving his people, the Kelownans, from a terrible cataclysm. He eventually returned to his planet to help heal the world from damage done by both the competitive nations and Goa'uld invaders. Ring is made of metal and the inside diameter measures approximately .75in.

\$ 200 - \$ 400



Lot 426

SILER'S PATCHES

Three patches worn by Sergeant Siler with his flight suit. SGC patch measures 4in, Earth patch measures 3.5in and Air Force Space Command patch measures 3in.

\$ 200 - \$ 400



Lot 427

SILER'S NAME PLATE

Metal name plate worn by Sergeant Siler with his dress blues. Measures 3in x .75in x .5in.

\$ 100 - \$ 200

LOTS 425 - 427

PROPS: OTHER CHARACTERS



Lot 428

SILER AND HARRIMAN'S GLASSES

A pair of non-prescription glasses used by both Sergeants Siler and Harriman in *SG-1*. Features silver metal frames. Includes leather case. Glasses measure 5.25in x 5.75in x 1.5in open. Case measures 6in x 2.25in x 1.25in.

\$ 100 - \$ 200



Lot 430

CAROLYN LAM'S ID BADGE AND MEDICAL INSTRUMENTS

ID badge, stethoscope, pen light and ink pen, used by Carolyn Lam in *SG-1*. Badge measures 2.75in x 4in. Stethoscope is 31.5in long. Pen light is 5.5in with a .5in diameter. Lam was played by Lexa Doig, the real-life wife of Michael Shanks.

\$ 100 - \$ 200



Lot 429

BILL LEE'S ALTERNATE REALITY GLASSES

Non-prescription glasses with plastic frames, worn by an alternate reality Dr. Lee in the *SG-1* Season Ten episode "The Road Not Taken". Includes a leather case. Glasses measure 5.5in x 6in x 1.5in open. Case measures 2.75in x 6in x 1.25in.

\$ 100 - \$ 200

429

PROPS: OTHER CHARACTERS

Lot 431

KINSEY'S US FLAG PIN

US flag pin worn by Robert Kinsey in the *SG-1* Season One episode, "Politics". Actor Ronny Cox proudly states that he was one of the first "politicians" to ever make a flag pin a central component of his dress clothes. Today it is a common practice. Pin is brass and measures .75in x .75in x .5in.

\$ 100 - \$ 200



Lot 432

MALCOLM BARRETT'S NID CREDENTIALS

NID identification and credentials used by Agent Malcolm Barrett to get through security and question a Baal clone in the *SG-1* Season Ten episode "Insiders". Barrett was introduced in Season Five as the first legitimate NID officer who did not work solely to serve his own interests. Cards measure 4.5in x 2.5in individually.

\$ 100 - \$ 200

Lot 433

ERNEST LITTLEFIELD'S CALENDAR

The calendar Ernest Littlefield used to keep track of his days on Heliopolis, used in the *SG-1* Season One episode, "The Torment of Tantalus". These pages indicate the half century Ernest spent on the world alone. The three sheets of parchment are marked on both sides with hash marks. Heavily distressed by production. Each sheet measures 8.75in x 10.5in.

\$ 400 - \$ 600



LOTS 431 - 433

PROPS: JOHN SHEPPARD

Lot 434

SHEPPARD'S MAJOR DOG TAGS

Metal dog tags worn by Major Sheppard in Season One of *Atlantis*, before he becomes a colonel in Season Two. Tags measure 2in x 1.25in and chains measure 4in and 24in long.

\$ 400 - \$ 600



Lot 436

SHEPPARD'S WRIST BAND

Terrycloth and elastic wrist band by Nike, worn inside-out by John Sheppard in *Atlantis*. Sheppard's wrist bands were one of the lasting mysteries of the series, as actor Joe Flanigan deliberately dodged questions as to why his character wore them. Measures 2.5in with a 2.5in diameter.

\$ 400 - \$ 600



Lot 435

SHEPPARD'S WATCH

Black and gray plastic sports watch worn by John Sheppard in *Atlantis*. Manufactured in Finland by Suunto. Watch is functional and measures 5.5in x 2.5in x 2in.

\$ 100 - \$ 200

435

LOTS 434 - 436