

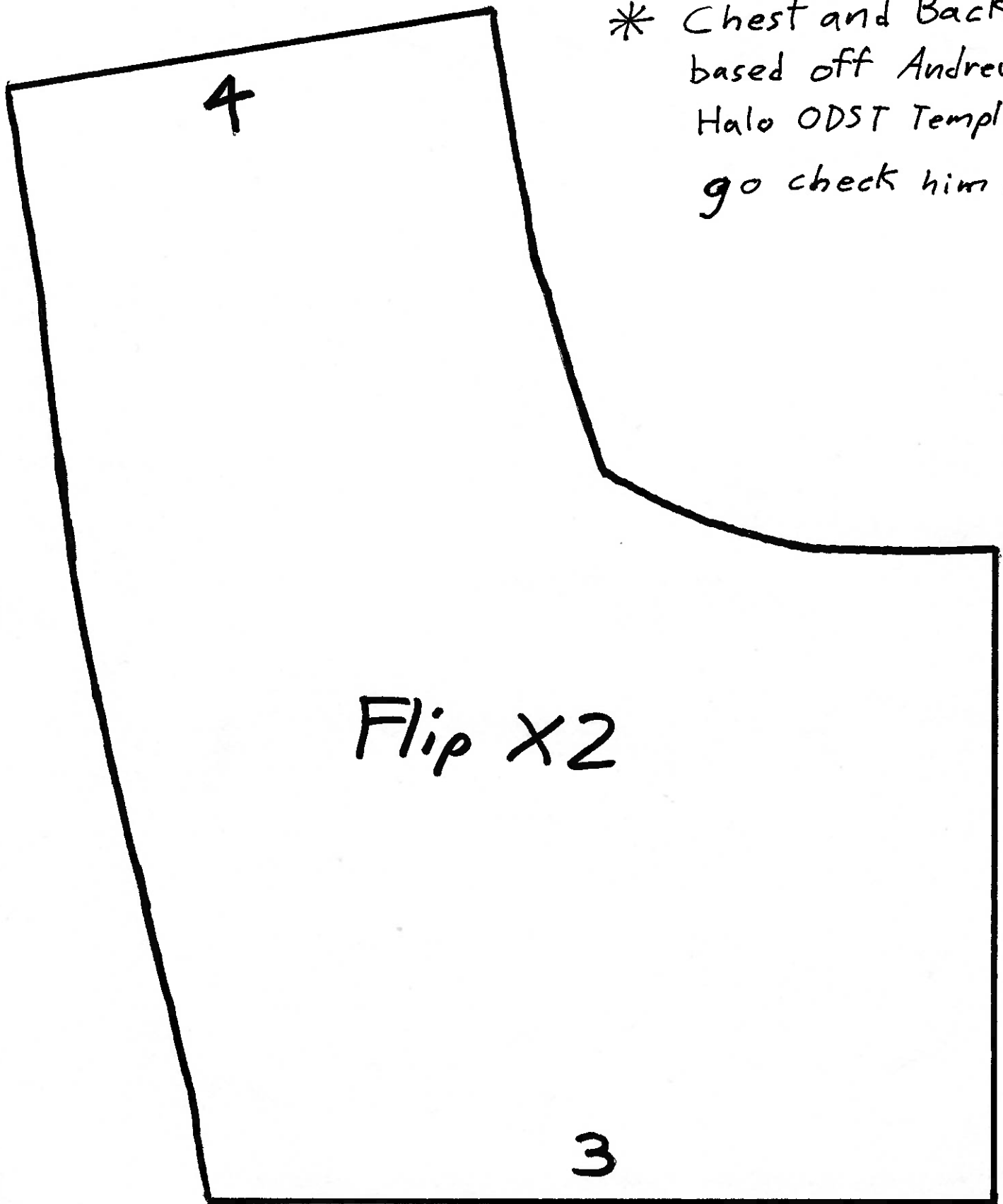
Notes:

(Custom Mandalorian Armor)

- Flip X2 means you trace the template on the foam once then flip it over and trace it again to get a mirrored version of the piece. Thus you will use that same template 2 times per armor part.
- This is just my custom design. It is not officially part of Star Wars Canon.
- Most EVA foam used was 6mm thick.
- Follow my YouTube tutorials for this suit for help. My channel name: Ryzer

Hope you enjoy it! - Ryzer

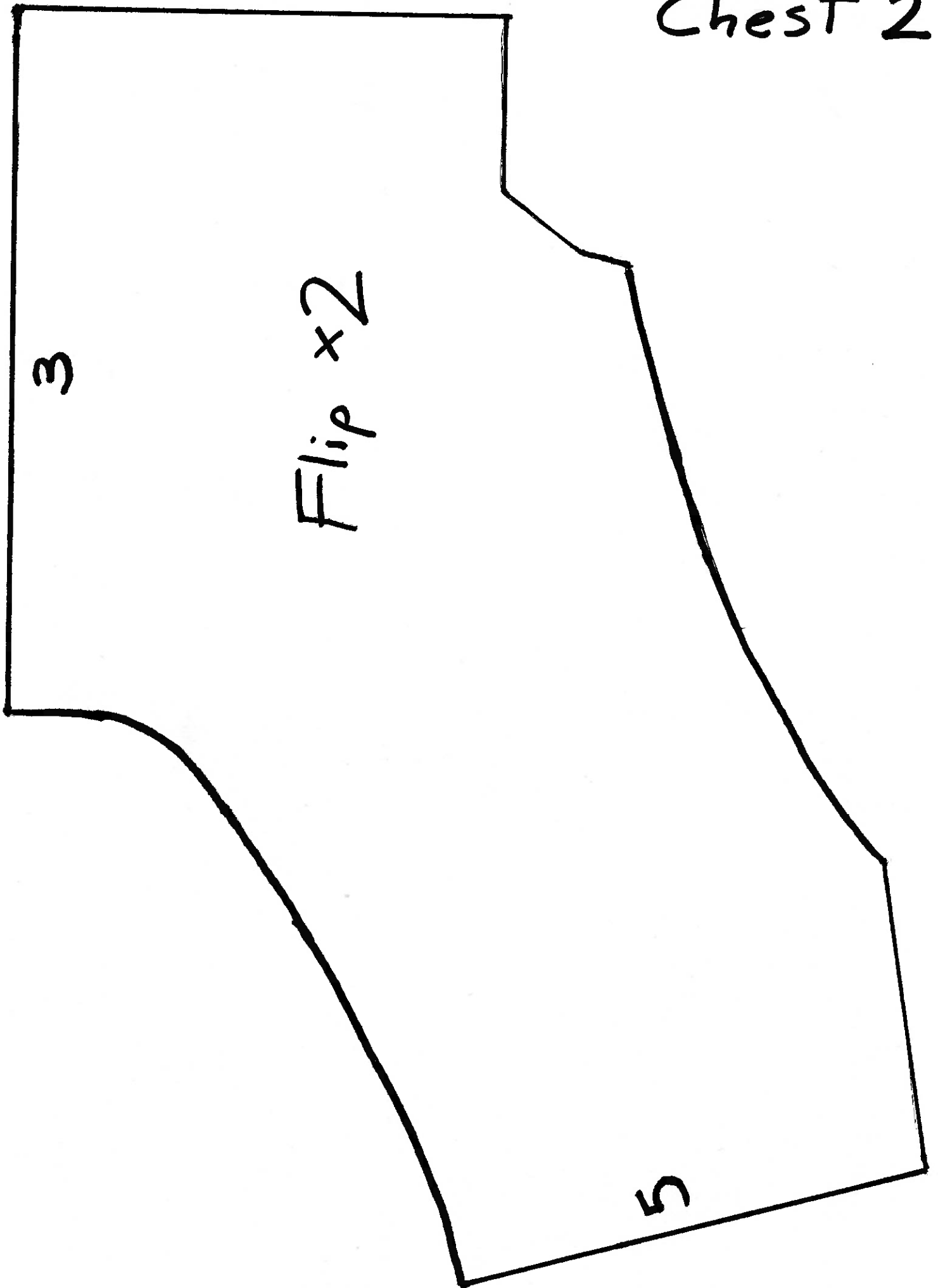
Chest 1



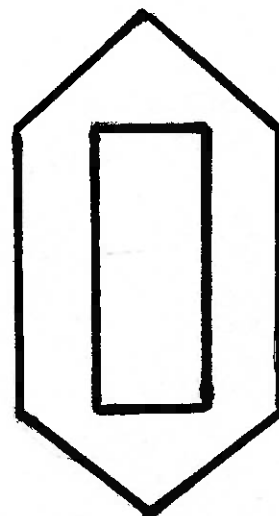
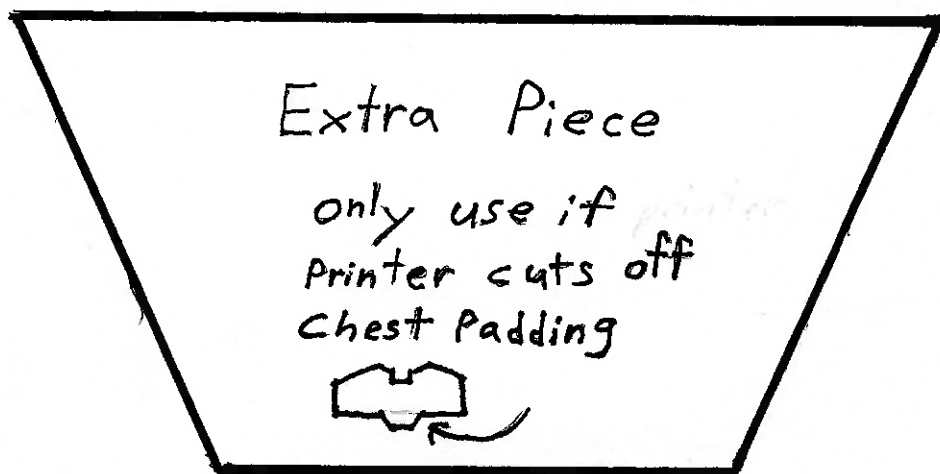
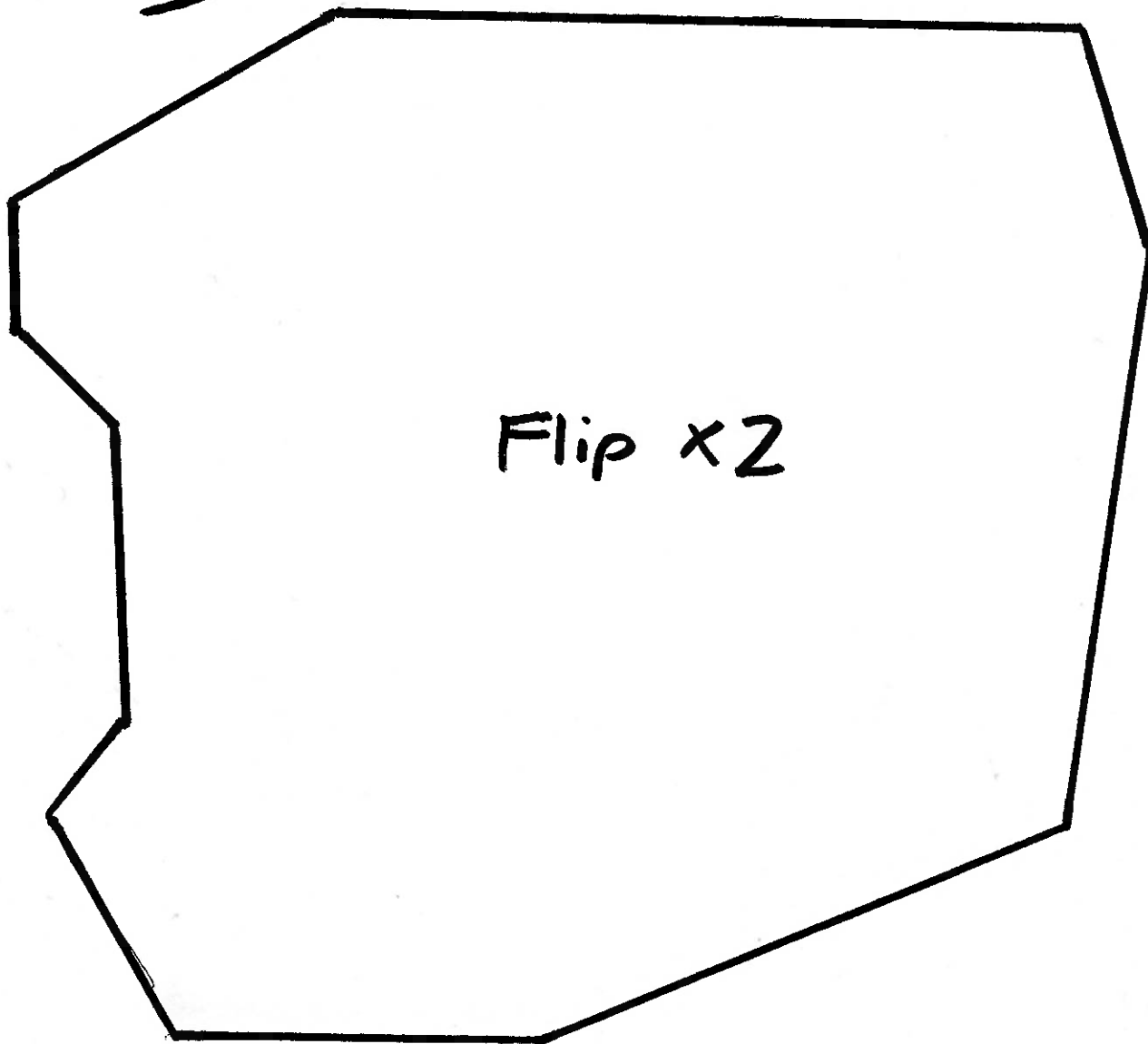
* Chest and Back is
based off Andrew DFT.
Halo ODST Templates
go check him out!

Flip X2

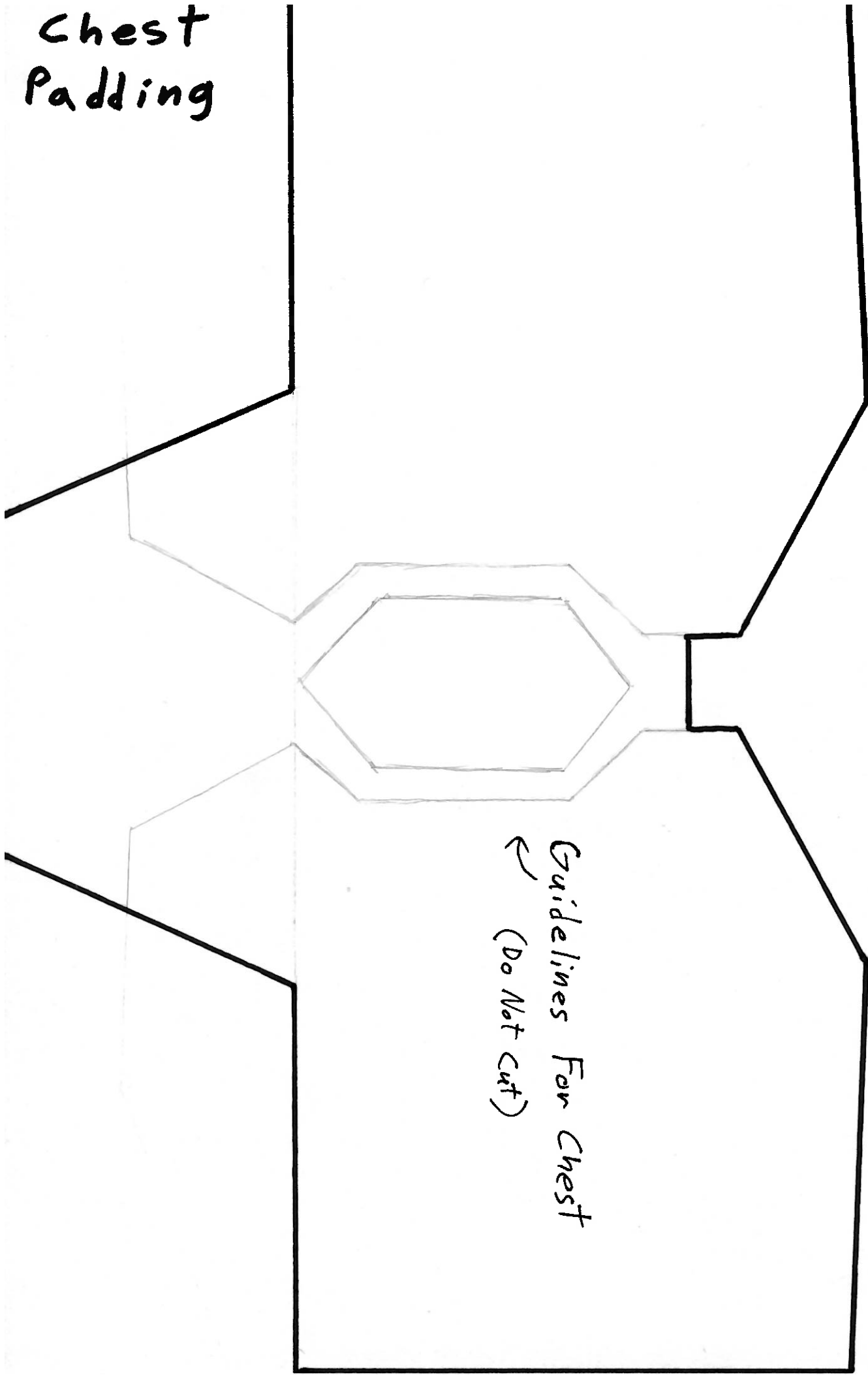
Chest 2



Chest 3



Chest Padding



Guidelines For Chest
← (Do Not Cut)

Back 1

Flip x2

2

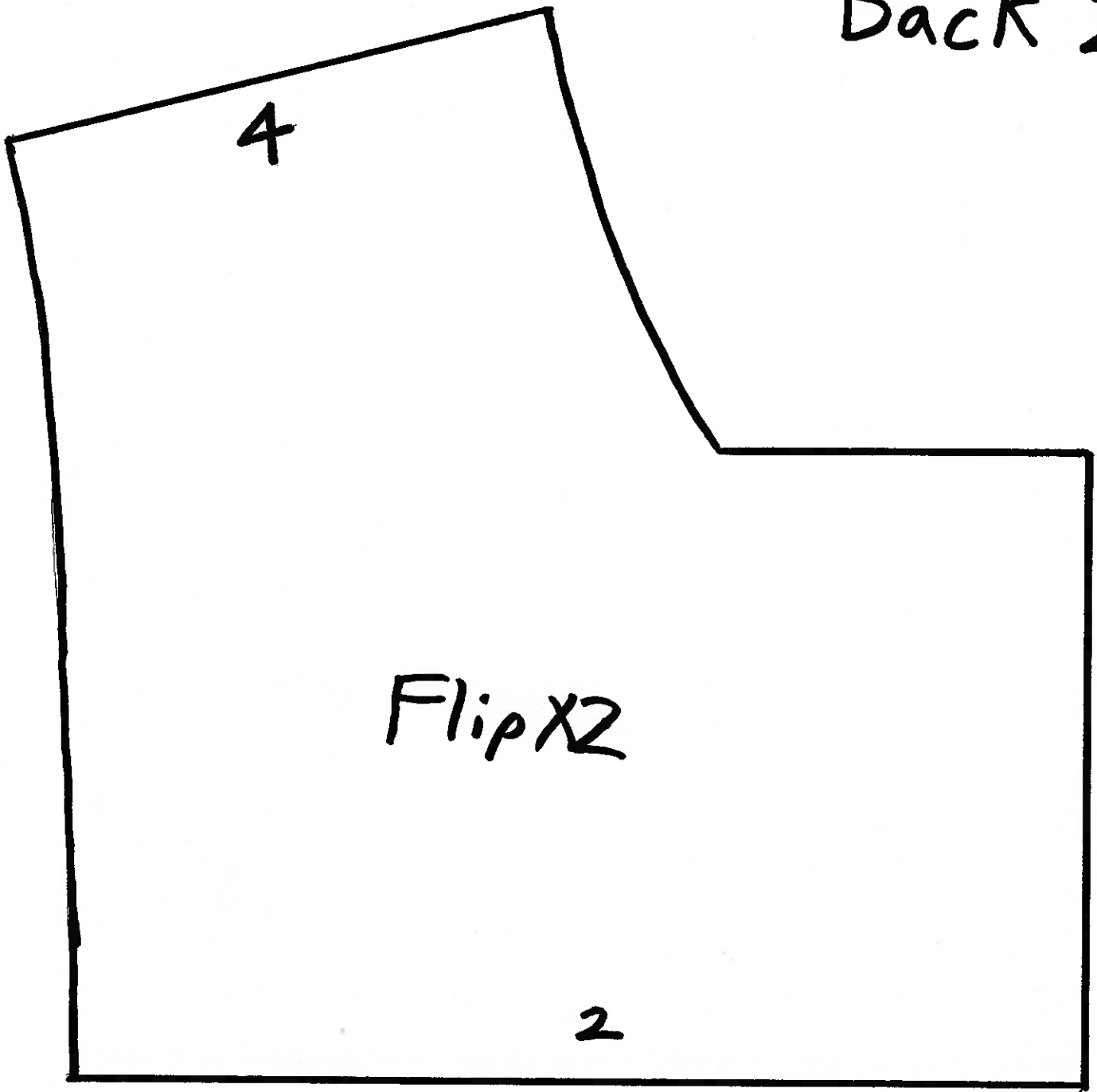
1

5

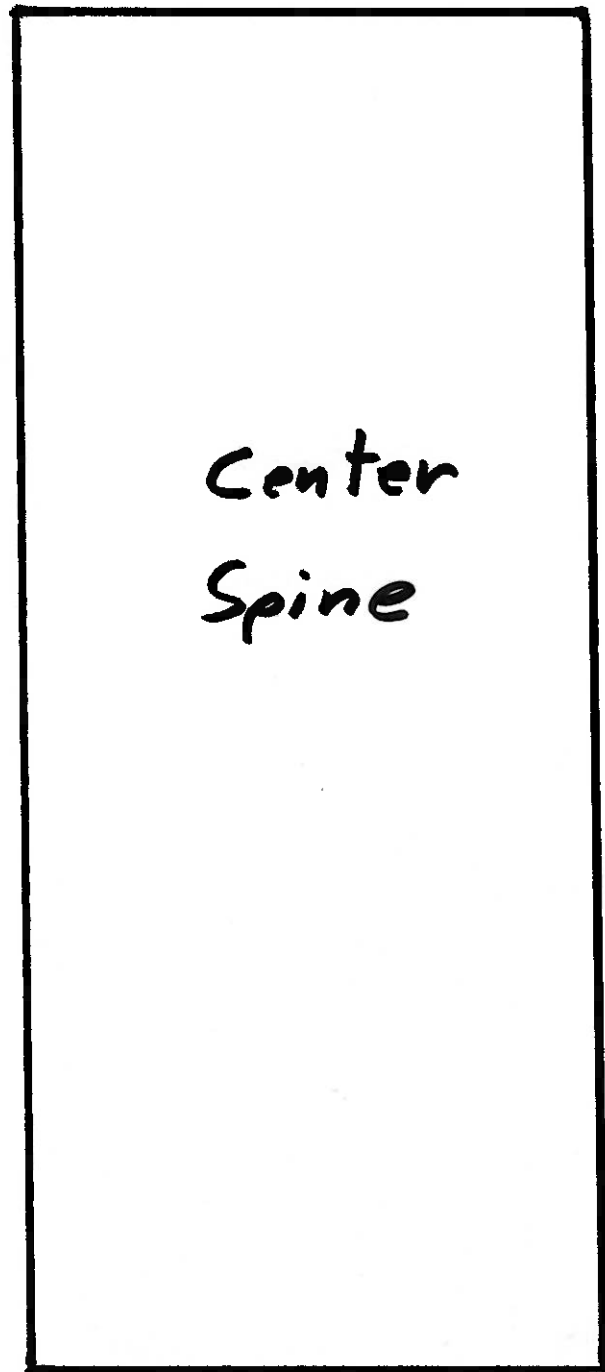
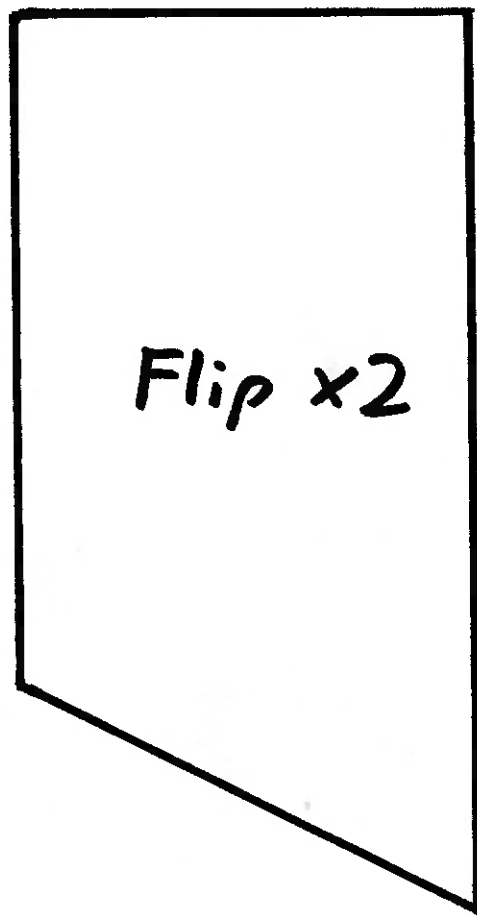
Flip x2

5

Back 2



Back 3



Neck/Shoulder
Strap on
Chest

Front

Flip
2x

top
Goes on Back near neck

Back

Chest Side Panel

