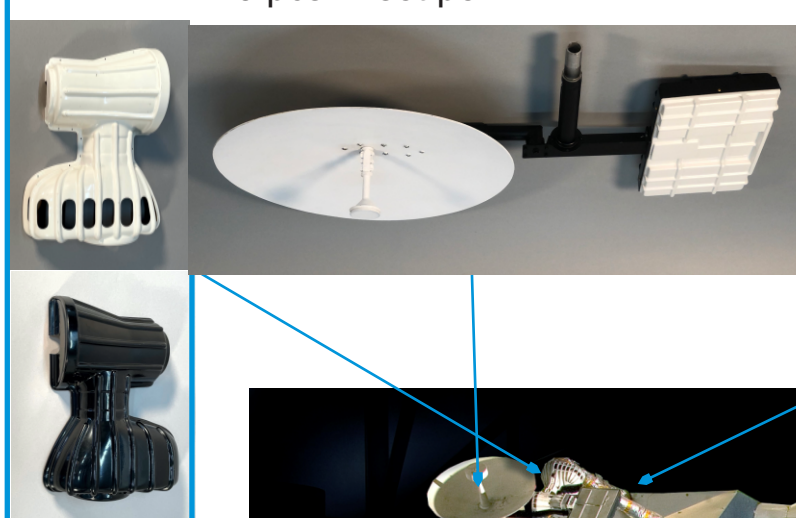


Available LM parts

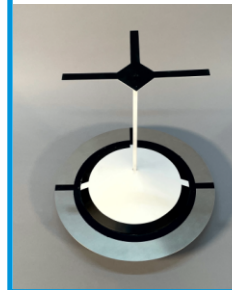
RCS thruster Quad
4 sets per LM



S-Band steerable antenna
3 pcs. 1 set per LM



Docking Target
1 per LM



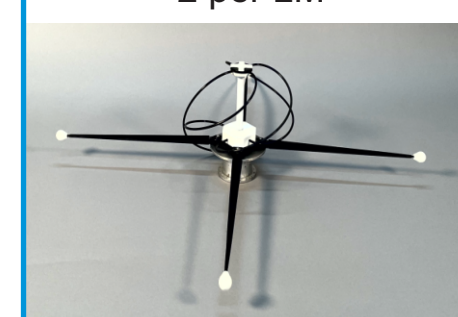
High Gain antenna
1 per LM



S-Band antenna
2 per LM



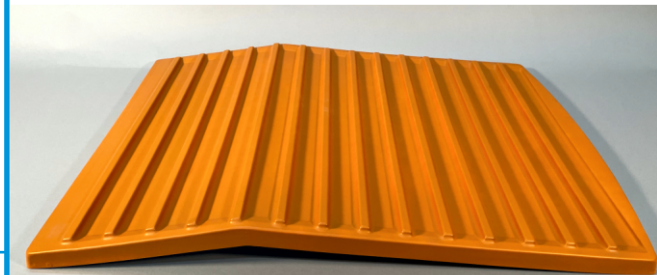
VHF antenna
2 per LM



VHF EVA antenna
1 per LM



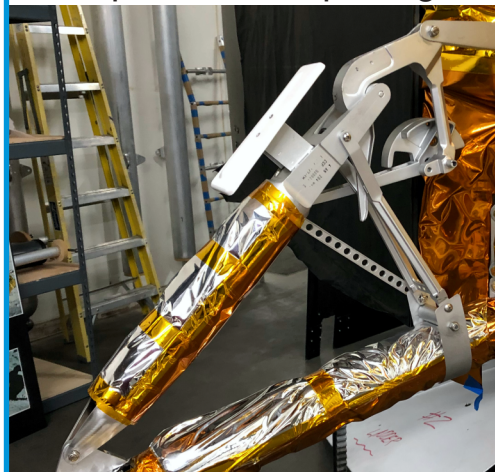
Platform or "front porch" 1 per



Outrigger assembly knuckle 1 per leg.



Landing Gear locks
6 pcs. - 2 sets per leg



Outrigger assembly
End fitting
2 per leg.
Also used for
side frame
end fitting
2 per leg



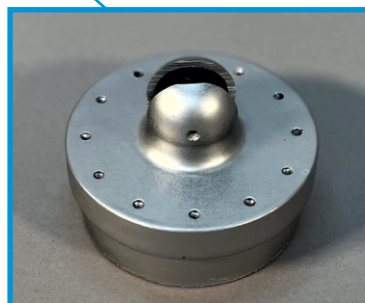
Side frame
"J" connector
piece - 2 per leg



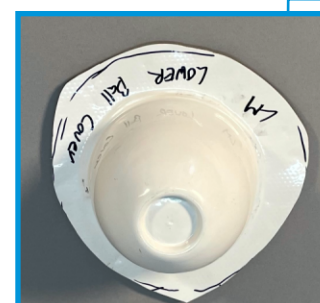
Thermal foil "flare"
1 piece - 2 per leg



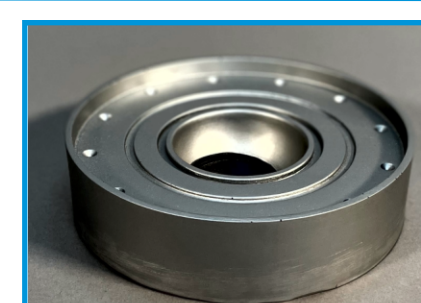
Secondary strut end
cap 1 piece - 2 per leg



Primary strut end
cap 1 piece - 1 per leg



Footpad center ball receiver
Ball 1 piece - 1 per leg



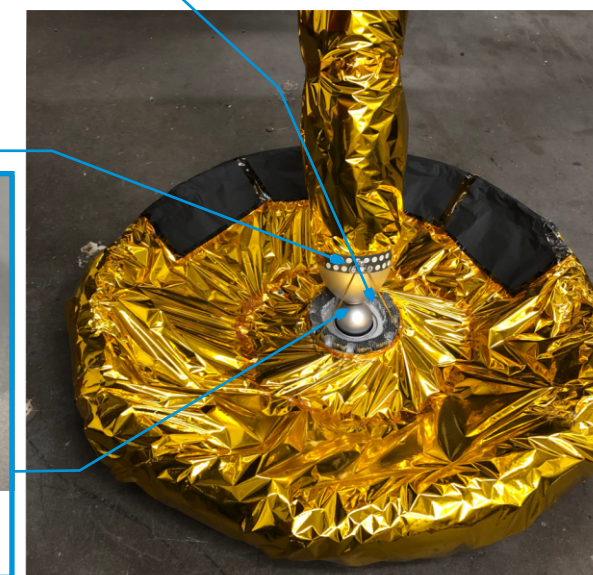
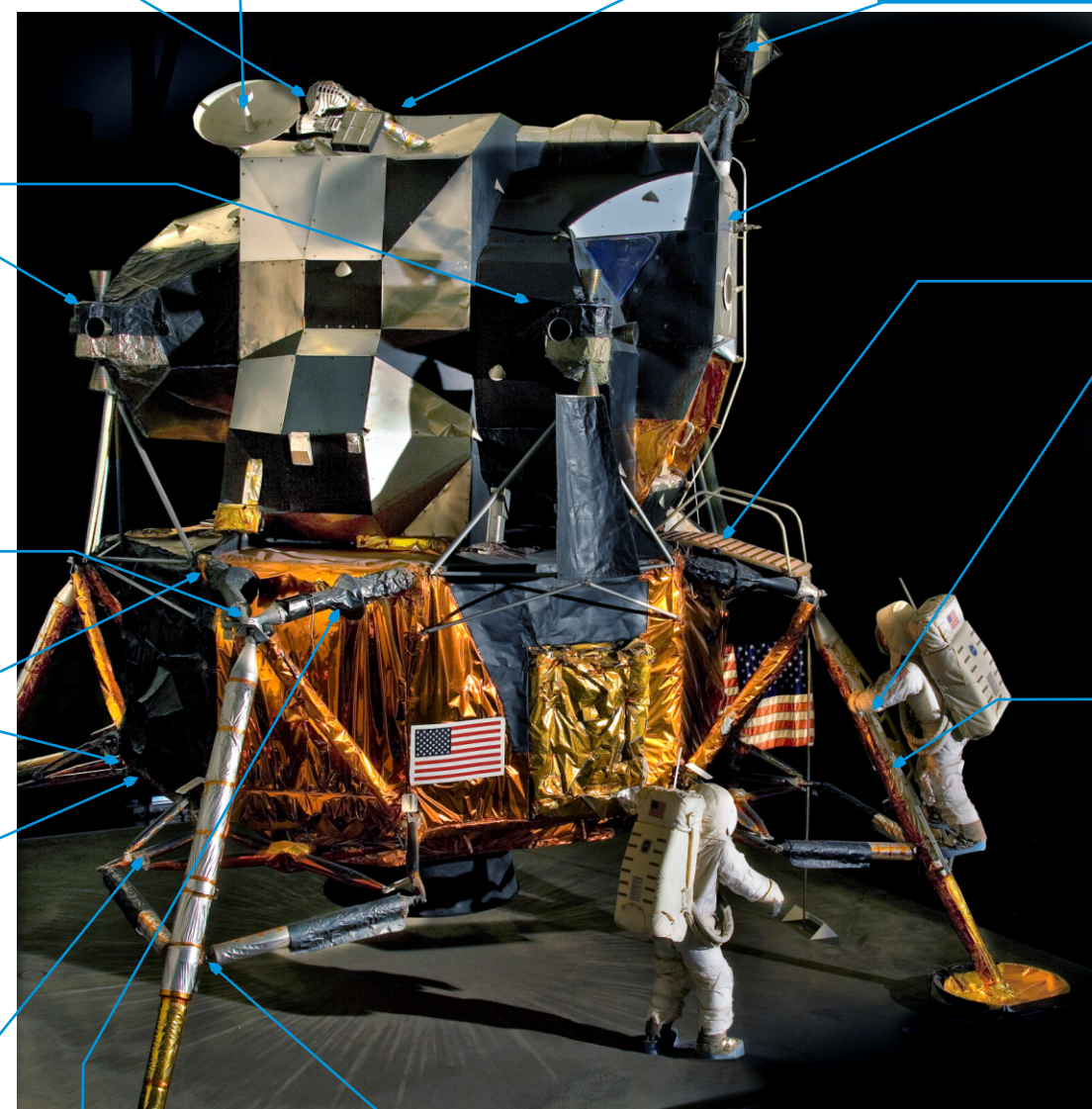
Dedication Plaque



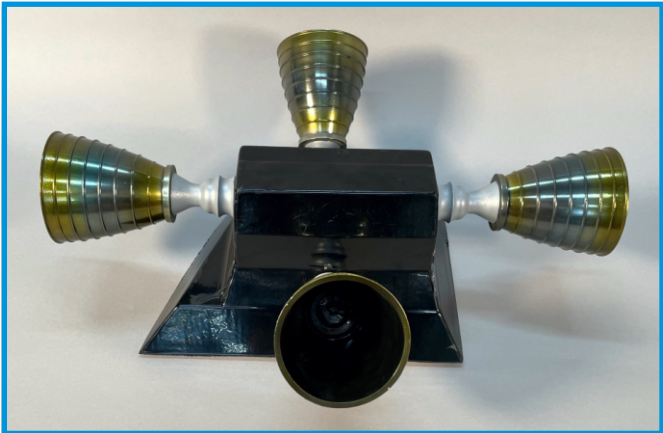
Primary strut
End Ball (steel)
1 piece - 1 per leg



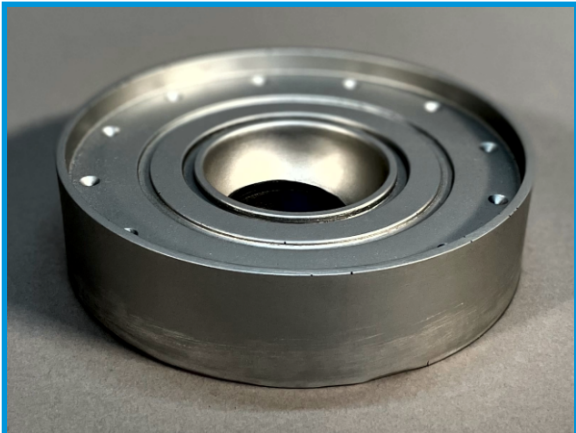
Ladder



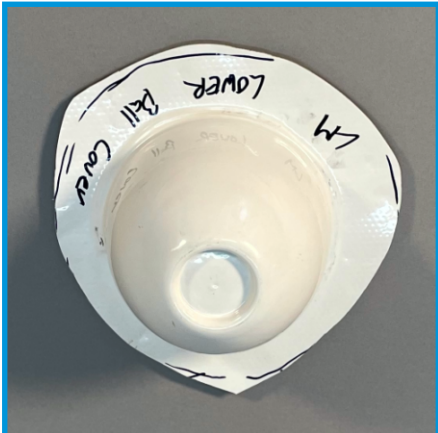
RCS thrusters Cast urethane
Complete RSC thruster quad.



Footpad center, ball receiver for Primary strut Cast urethane,



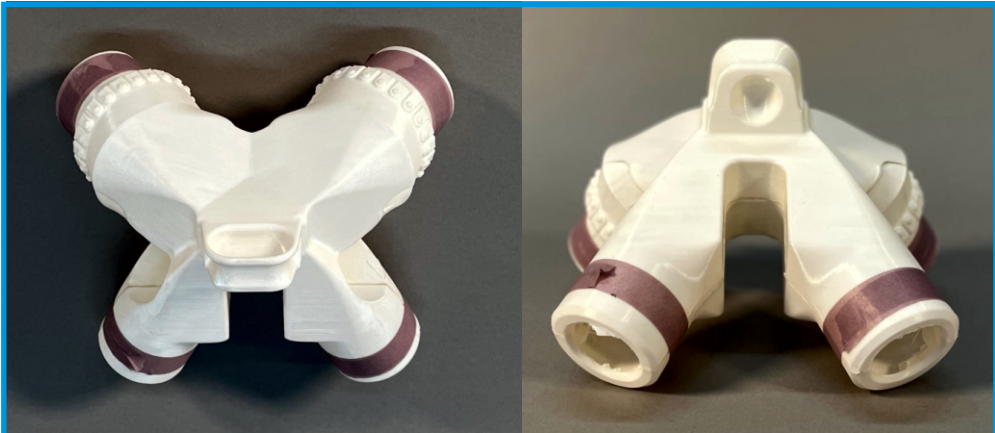
Primary Strut endcap
Vacuum-formed, in ABS



Primary strut End Ball
Hollow steel 1/8" wall



Outrigger assembly knuckle
D printed ABS filament. 2 piece, hollow

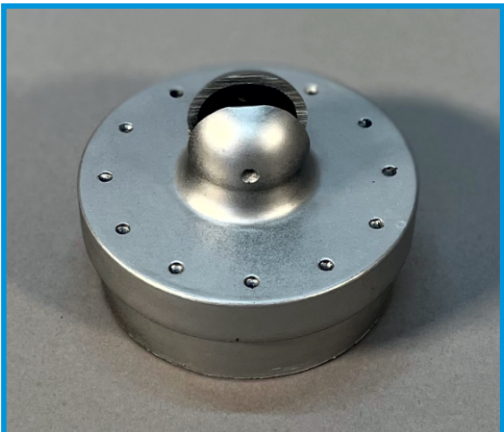


Outrigger assembly End fitting.
3D printed filament. 2 piece, hollow

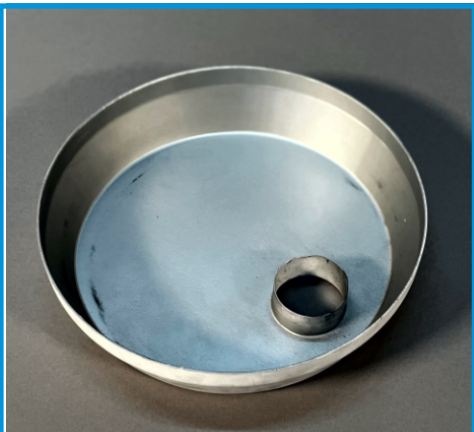
Side frame end fitting w/ gear lock ears. (Not pictured)
3D printed filament. 2 piece, hollow



Secondary Strut end cap
Cast urethane, hollow, raw castings



Thermal foil "flare"
Vacuum-formed, in ABS

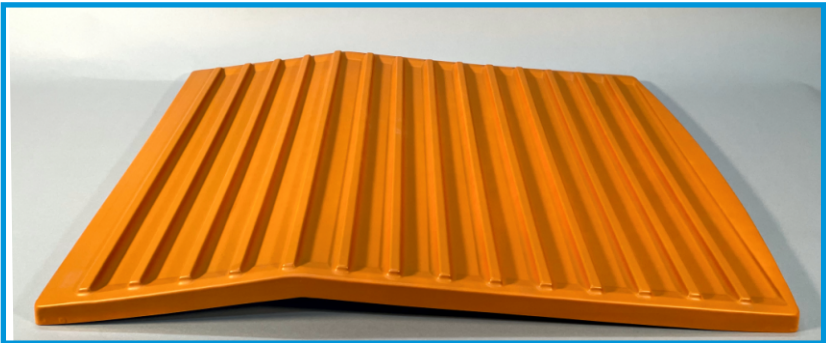


Side frame "J" connector
3D printed ABS filament. 2 piece, hollow

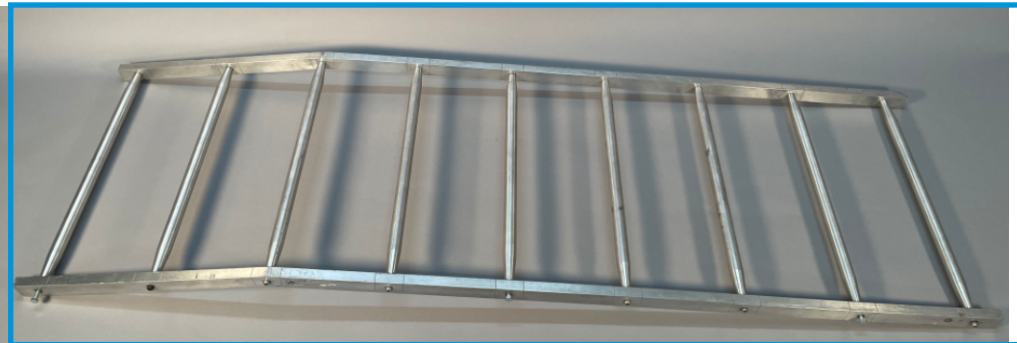
Landing Gear locks.
6 pieces cast urethane, 1 vacuum-formed part,



Platform, "Front Porch"
Vacuum-formed, in ABS



Ladder Machined aluminum



**Available
LM parts
Descriptions**