



GUNBLADE TEMPLATE

INSTRUCTIONS

CUT OUT ALL PIECES.

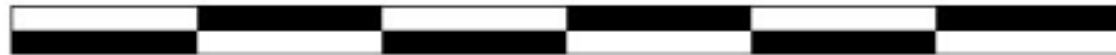
ATTACH EDGES (A), (B), (C), (D), (E) INTO ONE PIECE. ATTACH EDGES (F) INTO ANOTHER PIECE.

LAY OUT ALL PIECES ON MATERIAL. CUT OUT TWO OF EACH PIECE EXCEPT FOR THE CYLINDER TEMPLATES.

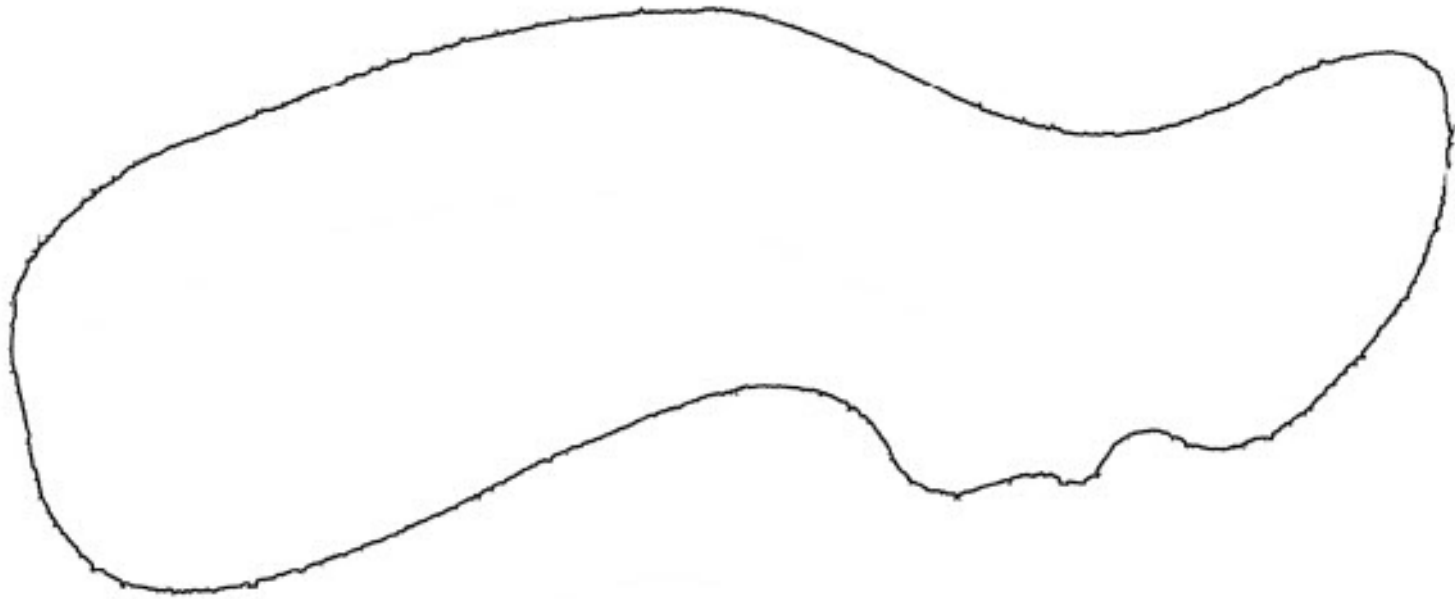
ASSEMBLE THE CYLINDER THEN INSERT THE ROD INTO THE CYLINDER.

GLUE THE PIECES IN THIS ORDER, FROM THE INSIDE OUT:

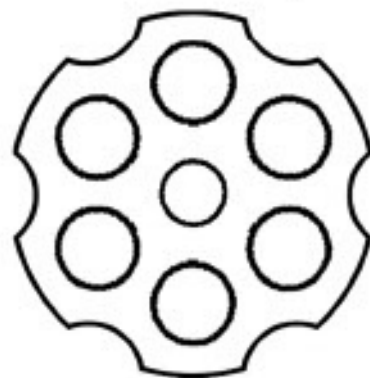
- BLADE W/ INNER RECEIVER
- CYLINDER
- OUTER RECEIVER
- GRIP



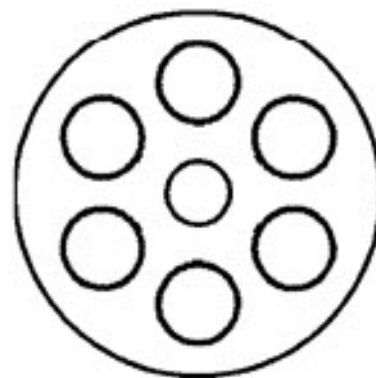
GRIP



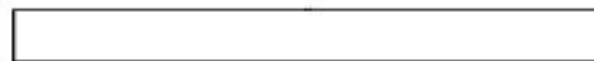
CYLINDER



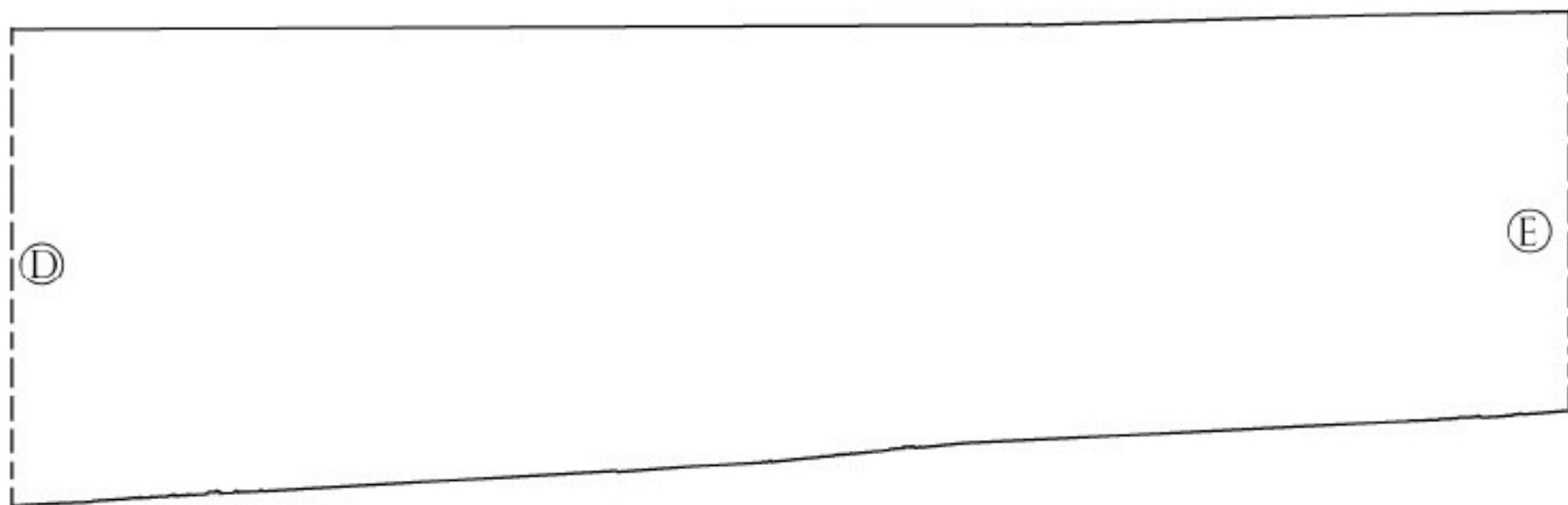
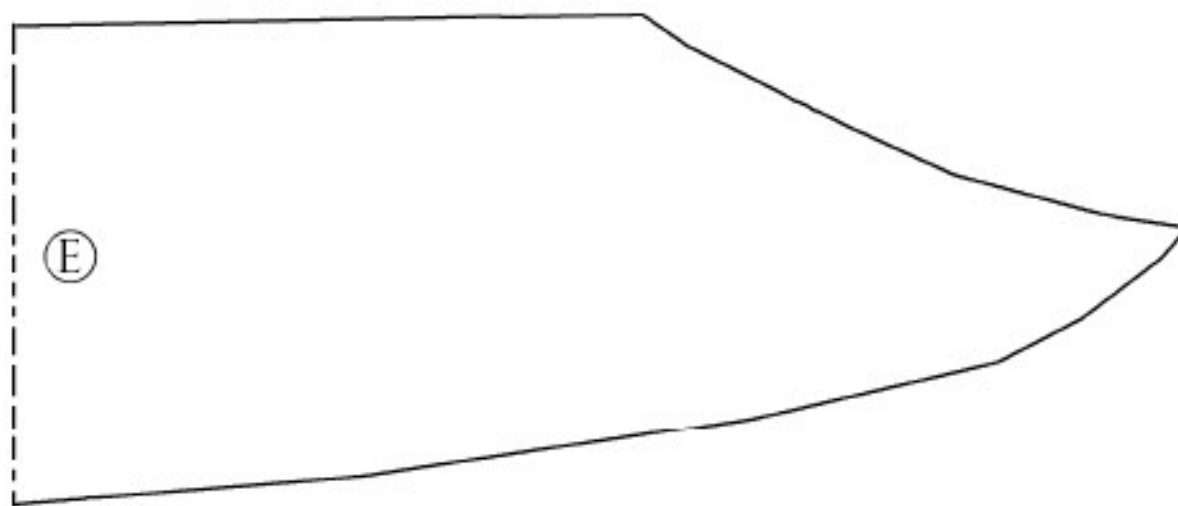
10X

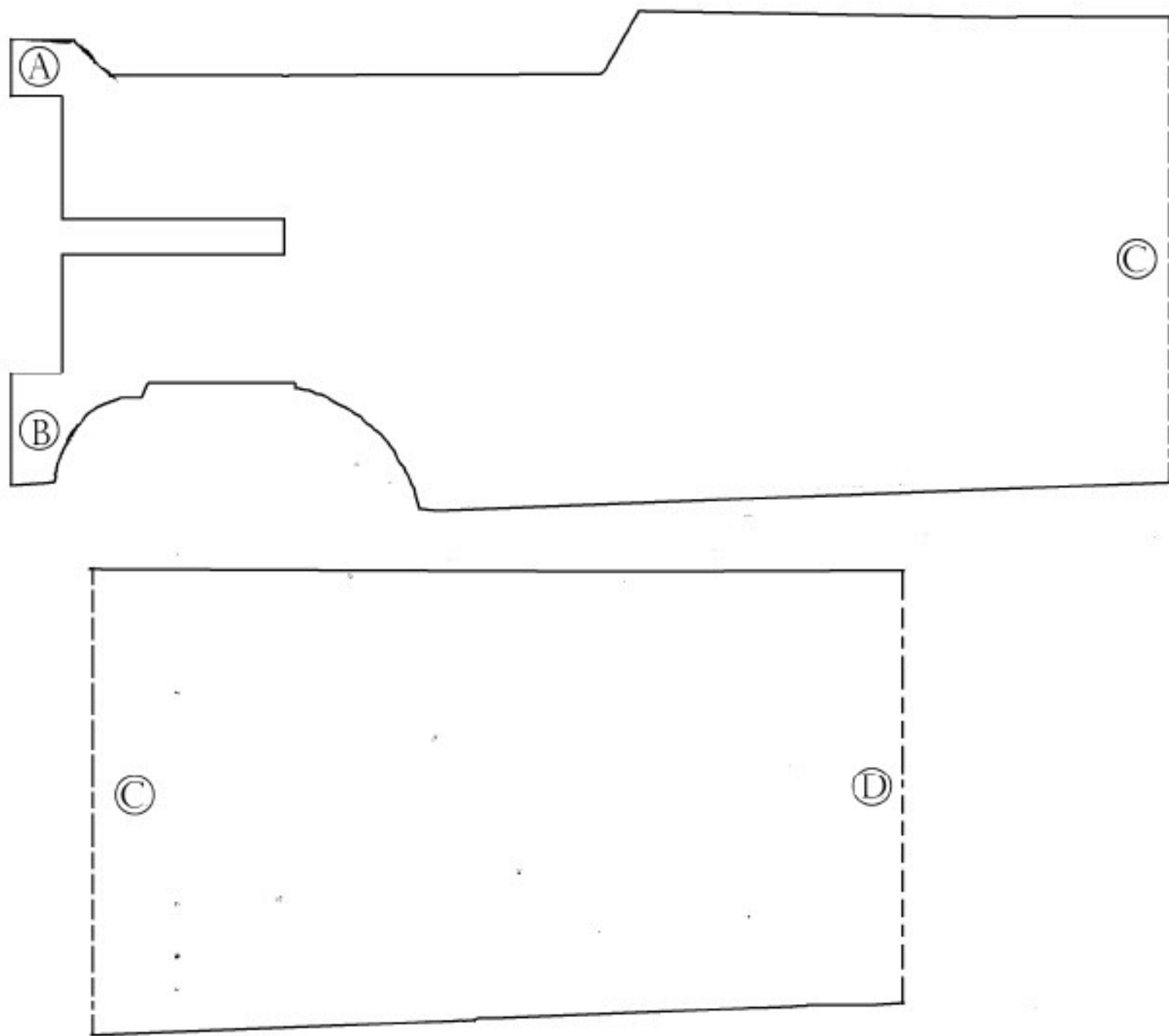


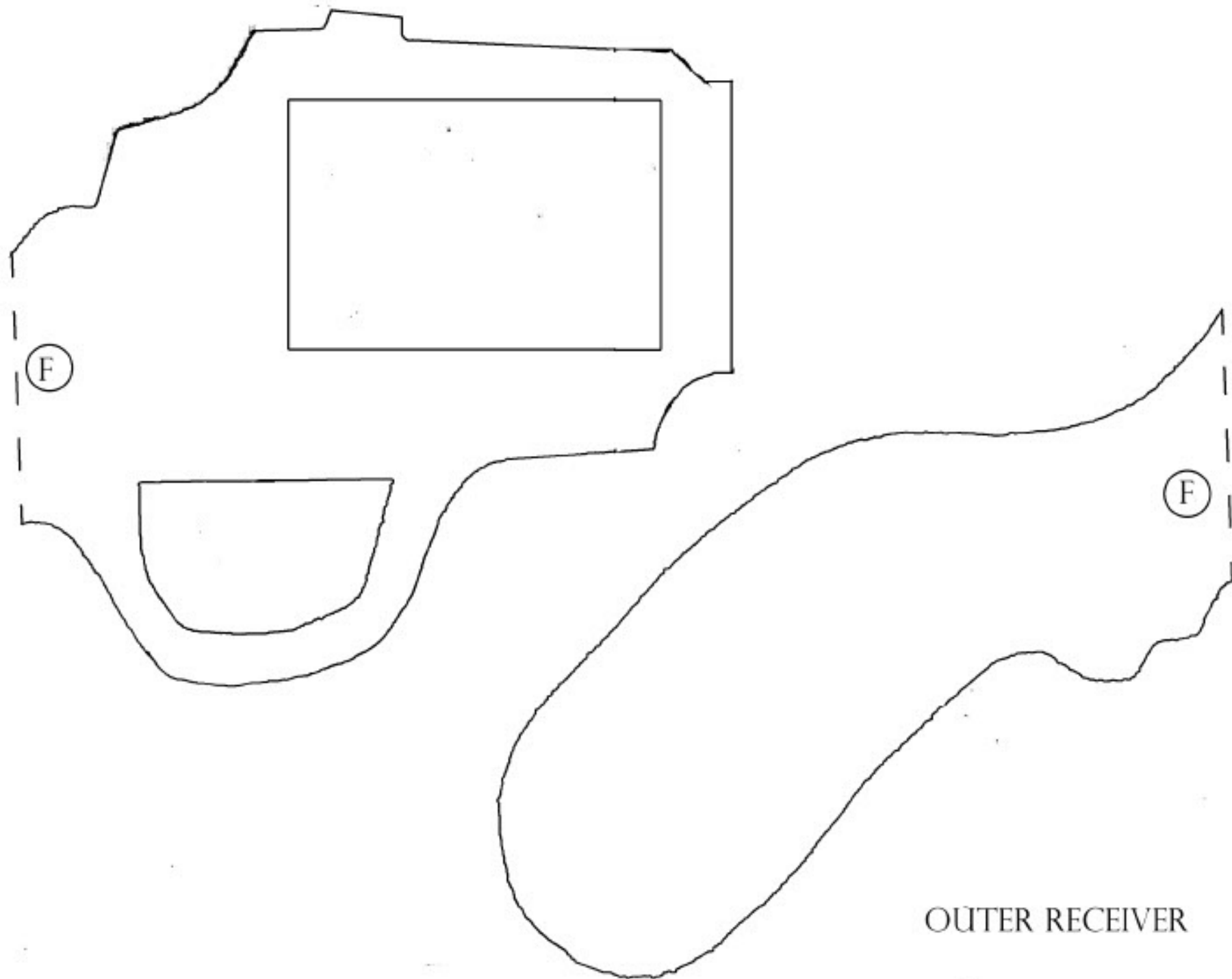
6X

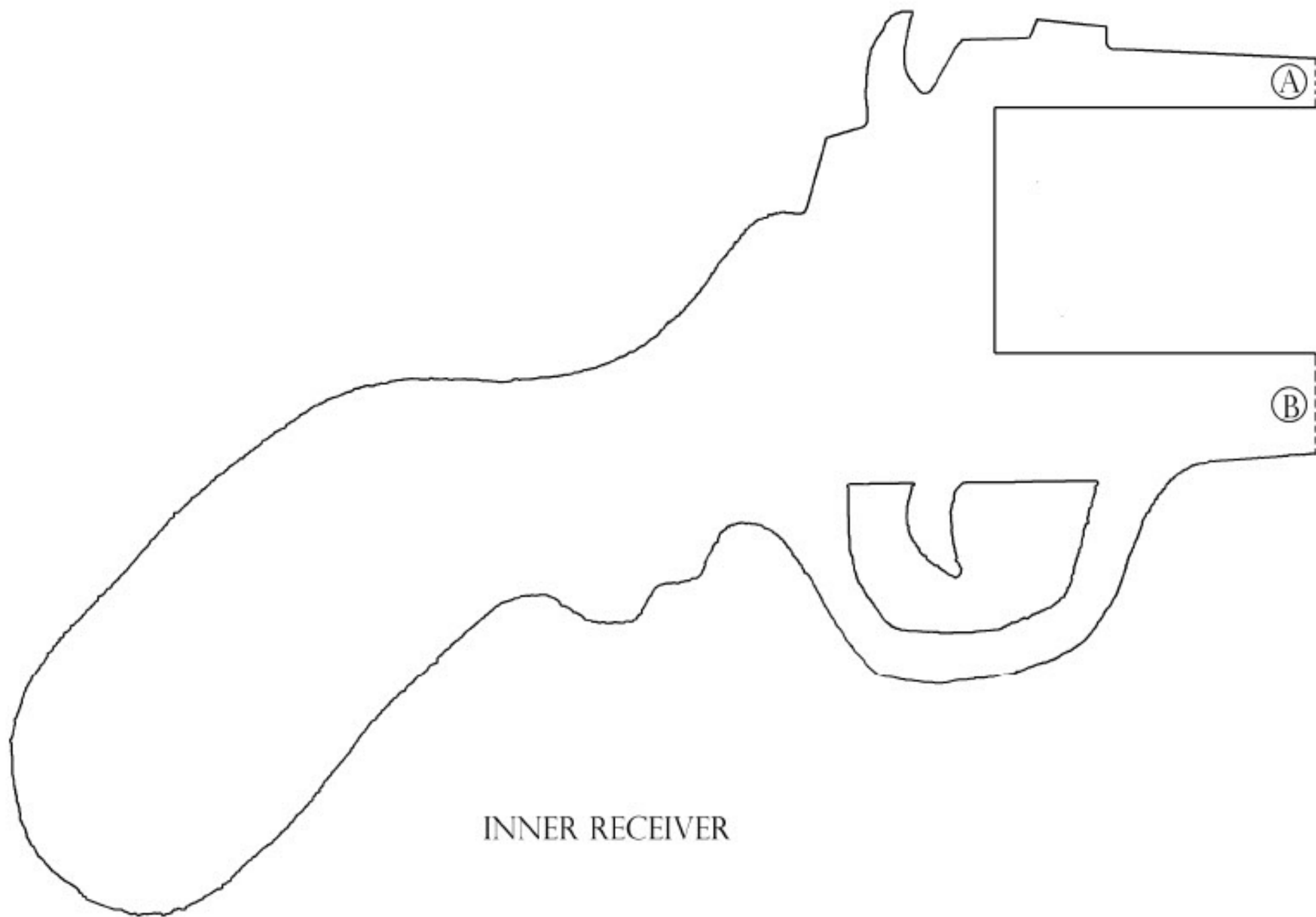


CYLINDER ROD









INNER RECEIVER