

**bk85's  
Kermit The Frog  
Replica Puppet Patterns  
Version 1.0**



**11" x 17" version**

# Things to Know

This puppet is scaled to 40mm eyes, If you are using larger or smaller eyes, scale accordingly.

All of the fleece/fabric parts, with exception of the inner liner, are hand sewn. Because of this, there is no seam allowance added to most of the patterns. If you will be using a sewing machine, please add the appropriate seam allowance before cutting the fabric.

If you are new to puppet building, I recommend the following YouTube channels to help familiarize yourself with the proper techniques. I would still consider myself an amateur in puppet building, so these wonderful experts can provide you with all of the necessary instruction far better than I can. Because of this I am only including patterns, and not instructions- perhaps a few tips here and there.

- <https://www.youtube.com/@PuppetNerd> (By far the best- Adam has made it his life's mission to teach the world to build puppets)
- <https://www.youtube.com/@SwazzleProductions> (Professional puppet builders that have made many puppets you might have seen on tv/film/stage. Don't forget to check out their livestreams too.)
- <https://www.youtube.com/@TheCreatureWorksStudio> (another great resource that I relied on many times)

In addition to YouTube, the Stan Winston School has a wonderful series of puppet building courses, but you have to purchase the courses or a subscription. I learned all of the basic methods for puppet building on YouTube, so try that out before you pay any money to learn more in-depth techniques. The materials aren't cheap, so save money where you can!

All of the pages of patterns are meant to be printed on 8.5x11 paper. The following logo is added to every page. This is a 1 inch square that you can use to make sure that the scale is correct. Due to the size constraints, some patterns are divided into two, and some are half patterns that must be flipped while tracing. I have also included a 1/2 inch circle version of the logo on all patterns as a backup scale check.



Above all, remember to have fun! This is the first puppet that I have ever built and I had a blast doing it. Of course there were frustrating moments along the way, but overall it was a very joyful experience. I hope that you find this as fulfilling, enthralling, and satisfying as I have. Happy building!

# Materials

These are the materials that I used in this build, but please feel free to use what you have or what you can afford. On each pattern, I have marked the type of fabric/material to help you keep track of what to use where.

Fabrics:

- "Frog" color Fuzzelle fleece, available from the "Puppet Pelts" website (general head and body)
- "Outdoor Retreat" wool blend felt, available from "Over the River Felt" on eBay and Etsy (collar and bottoms of feet)
- Black flannel (inner lining)
- Red flocked paper, or adhesive velvet sheet (for inside of mouth)
- Black flocked paper, or adhesive velvet sheet (for mouth detail and pupils)
- Bright pink felt (tongue)

Threads (all purchased from wawak.com):

- Gutermann Mara 100 Poly Wrapped Poly Core Thread- color #336 (for almost all of the hand sewing)
- Gutermann Mara 100 Poly Wrapped Poly Core Thread- color #3945 (only for attaching the collar)
- Gutermann Mara 100 Poly Wrapped Poly Core Thread- color #000 (for sewing the inner liner)
- Gutermann Mara 100 Poly Wrapped Poly Core Thread- color #000 (for sewing the boning rings)

Other materials:

- 1/2" reticulated foam from foamforyou.com. They call it "Drain Dry Foam" (regardless of what foam you use, it should be 1/2" thick- anything other than that will change the dimensions of the body)
- 1/16" red rubber gasket material. Mine came in a 6x6 inch square from the hardware store
- 1/2" covered plastic boning
- 40mm half dome eyes (or 3d printed files)
- Thin styrene or other plastic or 3d printed files (hand plate and foot plate)
- Polyester fiber fill
- 19 guage wire

Supplies:

- Barge contact cement
- Sewing needles
- Sewing pins and clips
- Sharpies
- Disappearing ink marker for fabric
- Black 2" gaff tape
- Scissors
- Razor blades



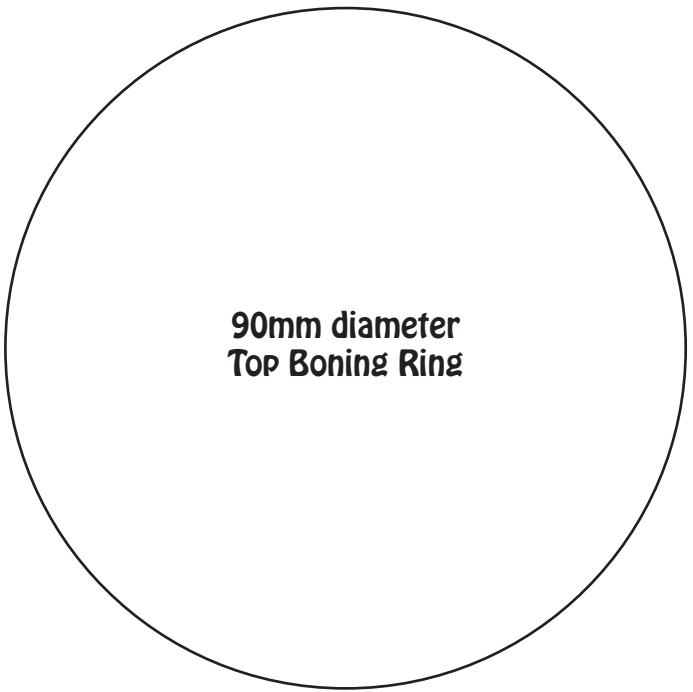
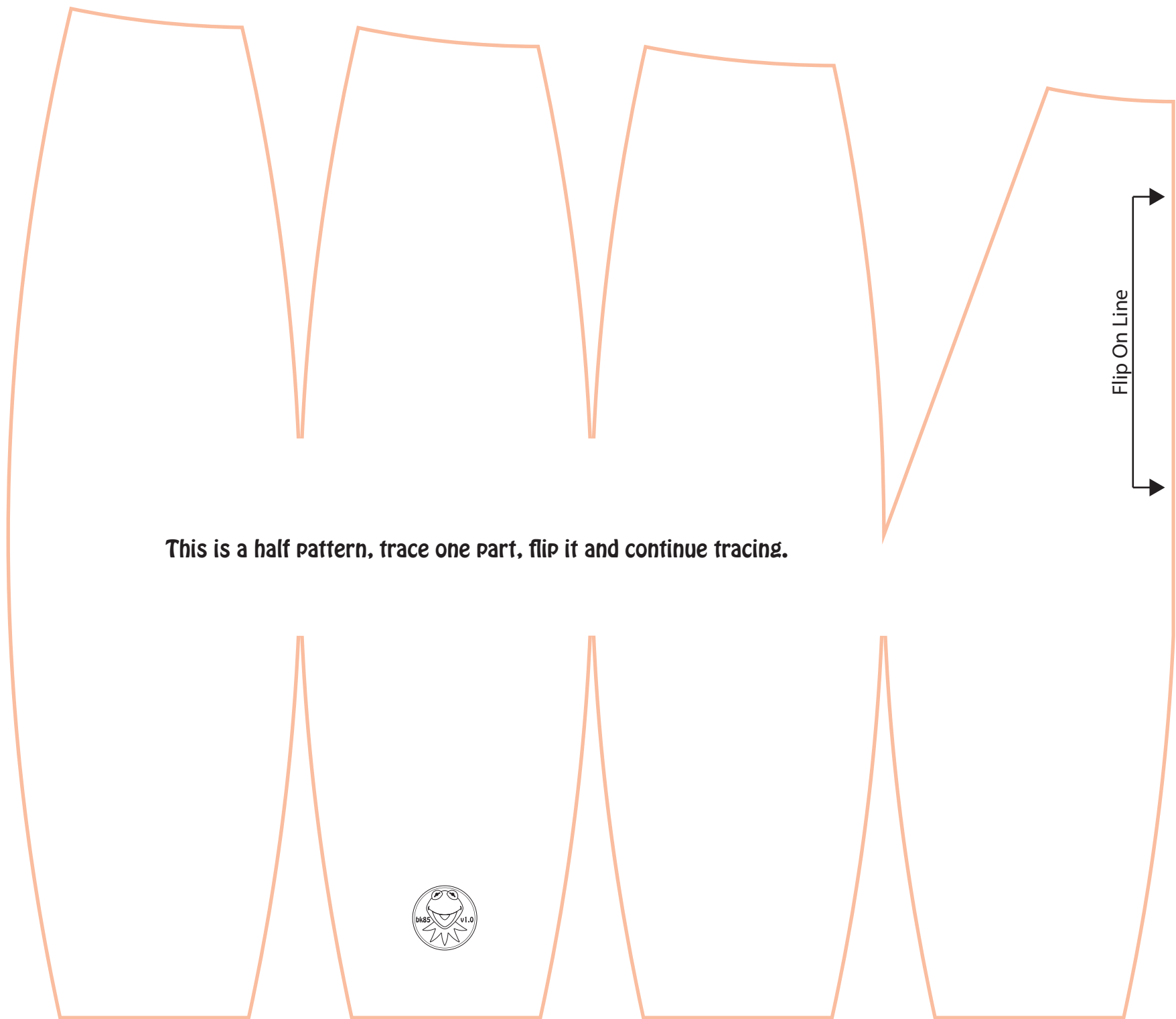
# Suggested Build Order

1. Construct the foam body.
2. Construct the boning hoops and attach to the body at either opening.
3. Sew up the fleece body covering, slip it over the foam body.
4. Sew the head pieces together and sew the bottom opening to the top of the body.
5. Make the inner lining.
6. Assemble the mouth plate.
7. Glue the inner lining to the inside of the mouth plate (the side that does not have the tongue)
8. Glue the fleece head to the mouth plate.
9. Cut the collar and attach just above the seam where the head and body meet.
10. Make the arms and hands. Attach to each other then attach to the body.
11. Make the legs and feet. Attach to each other then attach to the body.
12. Attach the eyes, and affix the pupils.
13. Sew the bottom opening of the inner liner to the bottom opening of the body.
14. Make the outer sleeve and attach to the body.

# Final Kermit



# Foam Body & Boning Rings



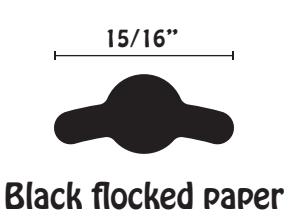
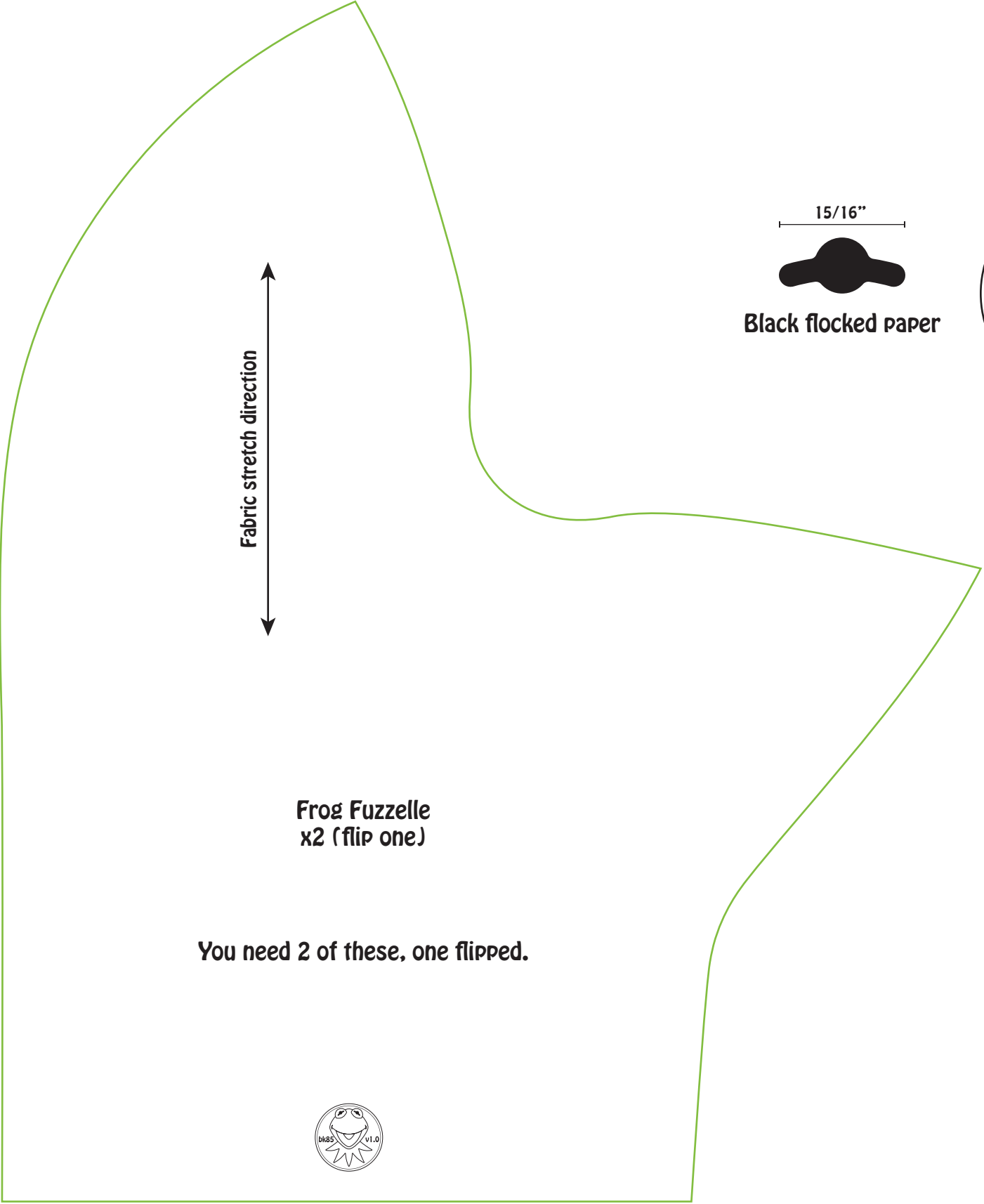
Fleece Body

Frog Fuzzelle

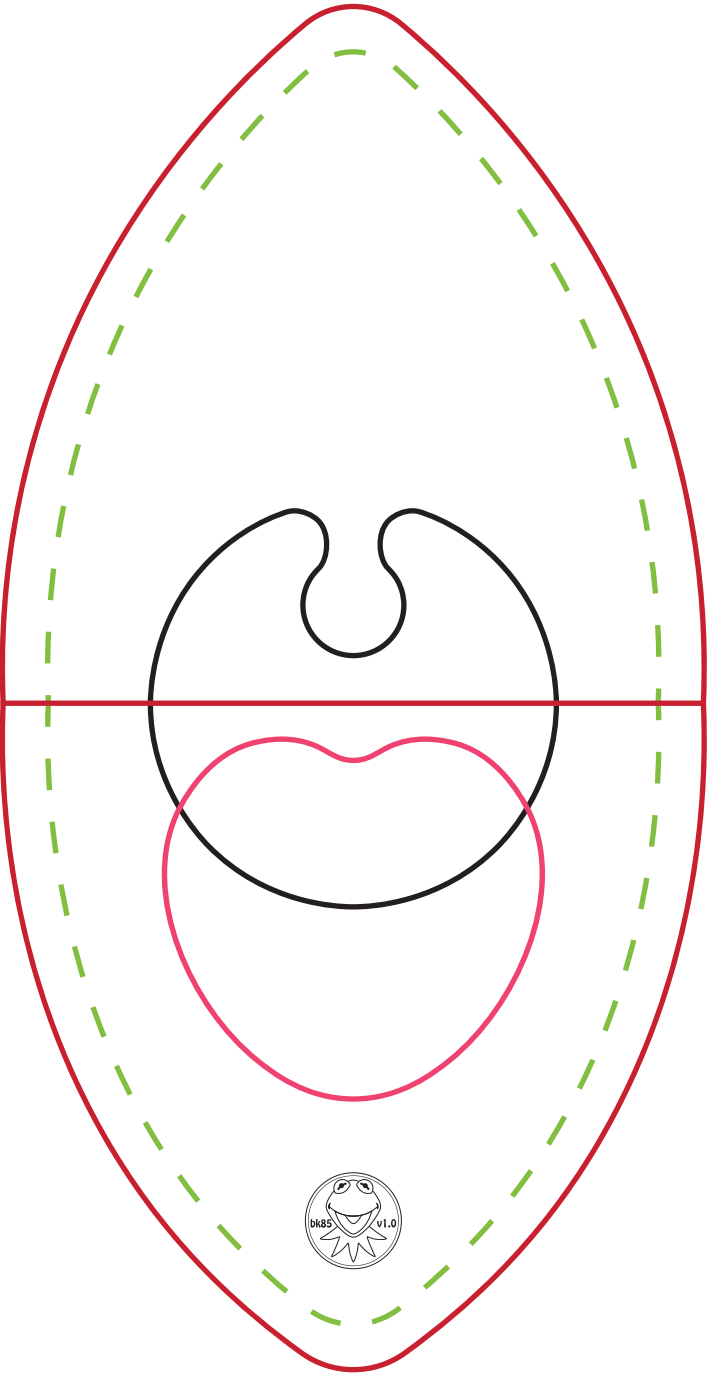
Fold On Line



# The Head, Eyes, & Mouth

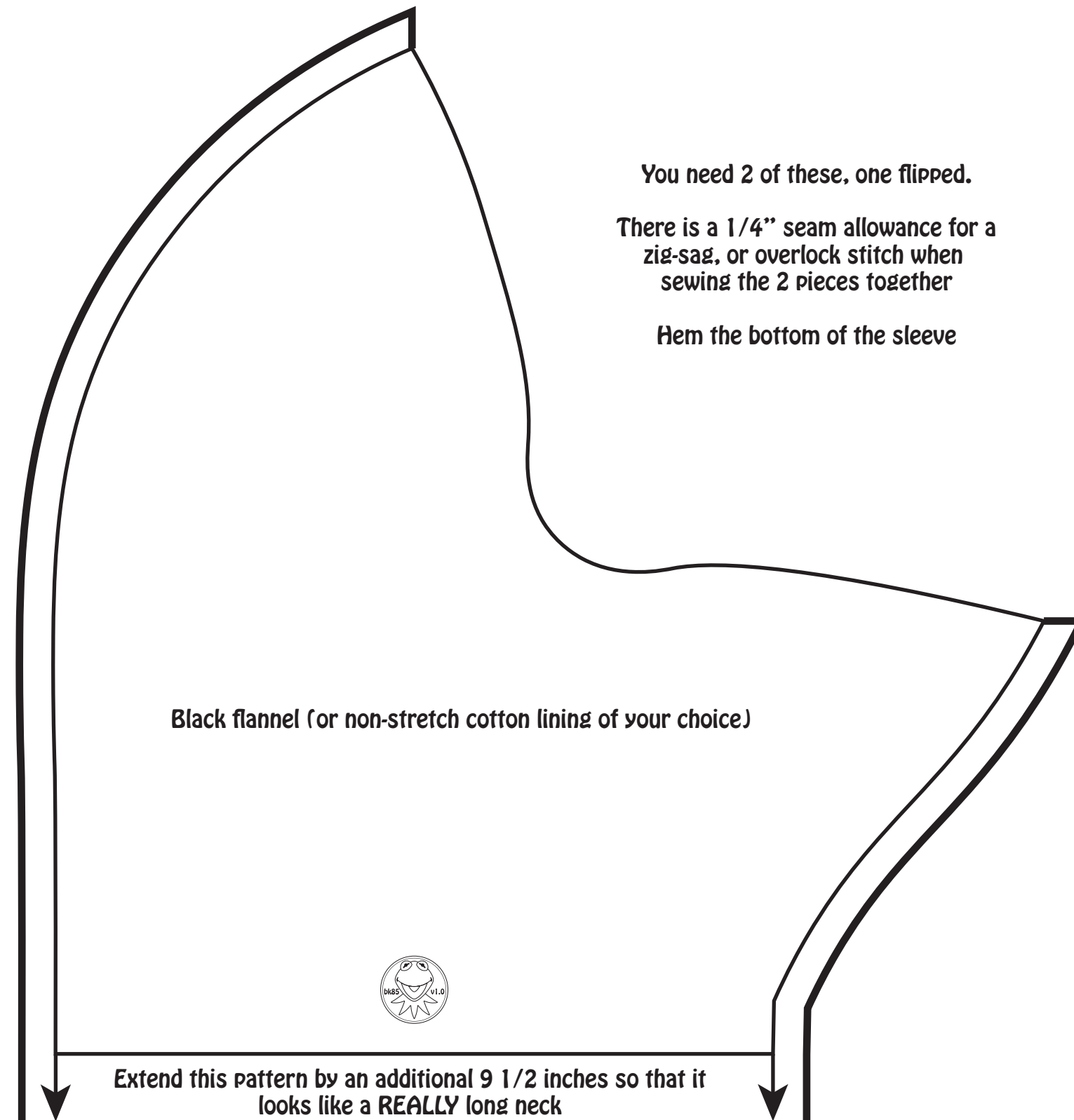


The green dashed line is to help you align the head fleece to the mouth plate

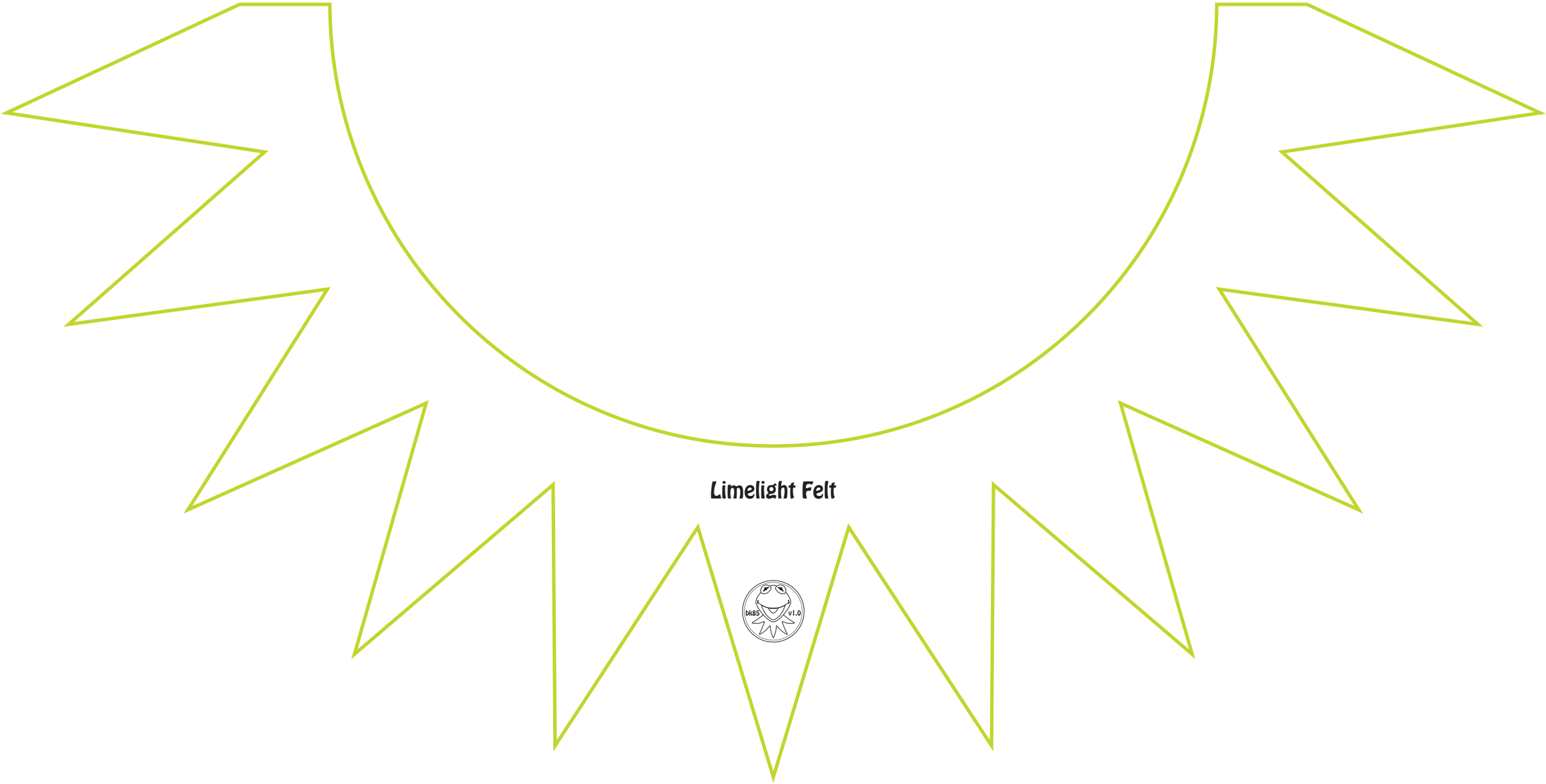




## Inner Lining



# The Collar





# Arms & Hands



## Legs & Feet



**Frog Fuzzelle  
x2 (flip one)**

**Frog Fuzzelle  
x2 (flip one)**

**and**

**Outdoor Retreat Felt  
x2 (flip one)**



**Styrene  
x2**



**Rather than cut out the felt piece, it's easier if you  
attach the foot pieces then trim off the excess attached felt.**

**The order of foot construction from top  
to bottom is fleece, fiberfill or foam, styrene plate,  
then the felt at the very bottom.  
Each layer glued to the preceeding and following ones.**



# Bottom Sleeve

Frog Fuzzelle



1/2" hem at bottom

