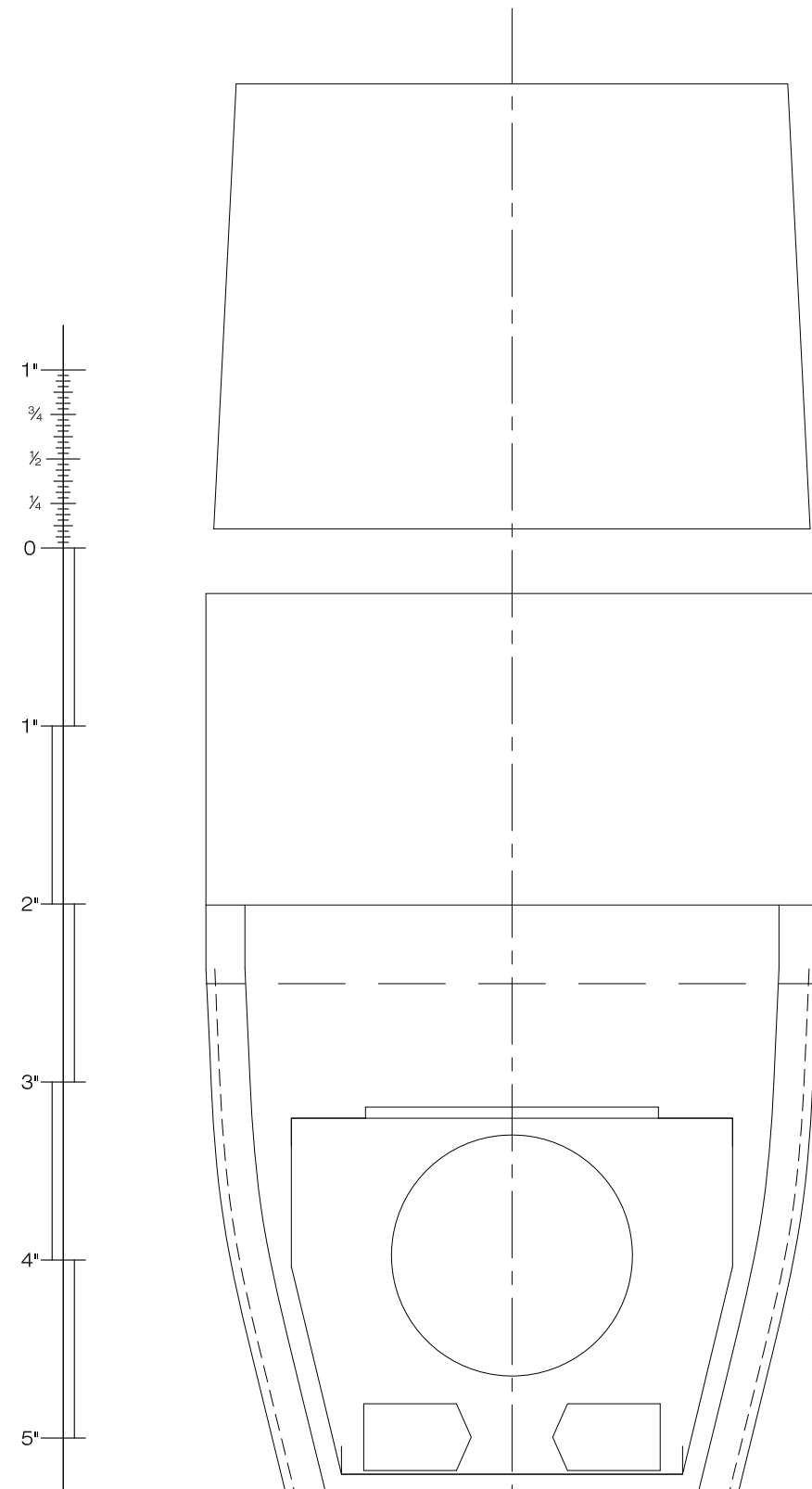


PIECE	CHIN GUN	STR.CHK GUN	HEAD	PT.15	PT.13	PT.12	PT.08	PT.06	PT.05E	PT.05	PT.02	PT.01
B31												
C18												
H1												
J1												
A9												
F18												
B28												
H1												
C13												
A11												
F14												
B1												
B9												
A3												
A45												
B19												
D52												
D1												
E37												
M1												
B14												
B20												
C1												
C21												
C22												
C23												
C24												
C25												
C26												
C27												
C28												
C29												
C30												
C31												
C32												
C33												
C34												
C35												
C36												
C37												
C38												
C39												
C40												
C41												
C42												
C43												
C44												
C45												
C46												
C47												
C48												
C49												
C50												
C51												
C52												
C53												
C54												
C55												
C56												
C57												
C58												
C59												
C60												
C61												
C62												
C63												
C64												
C65												
C66												
C67												
C68												
C69												
C70												
C71												
C72												
C73												
C74												
C75												
C76												
C77												
C78												
C79												
C80												
C81												
C82												
C83												
C84												
C85												
C86												
C87												
C88												
C89												
C90												
C91												
C92												
C93												
C94												
C95												
C96												
C97												
C98												
C99												
C100												

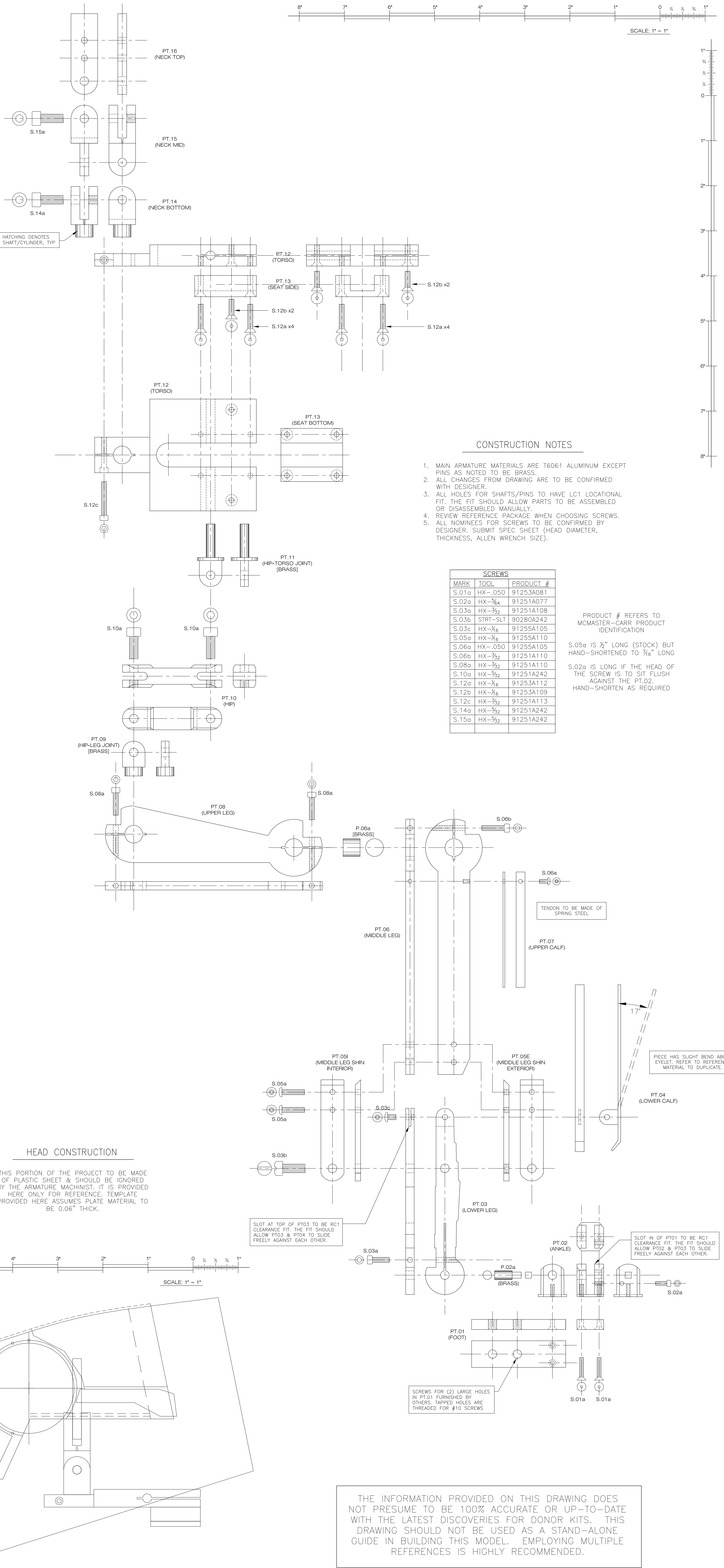
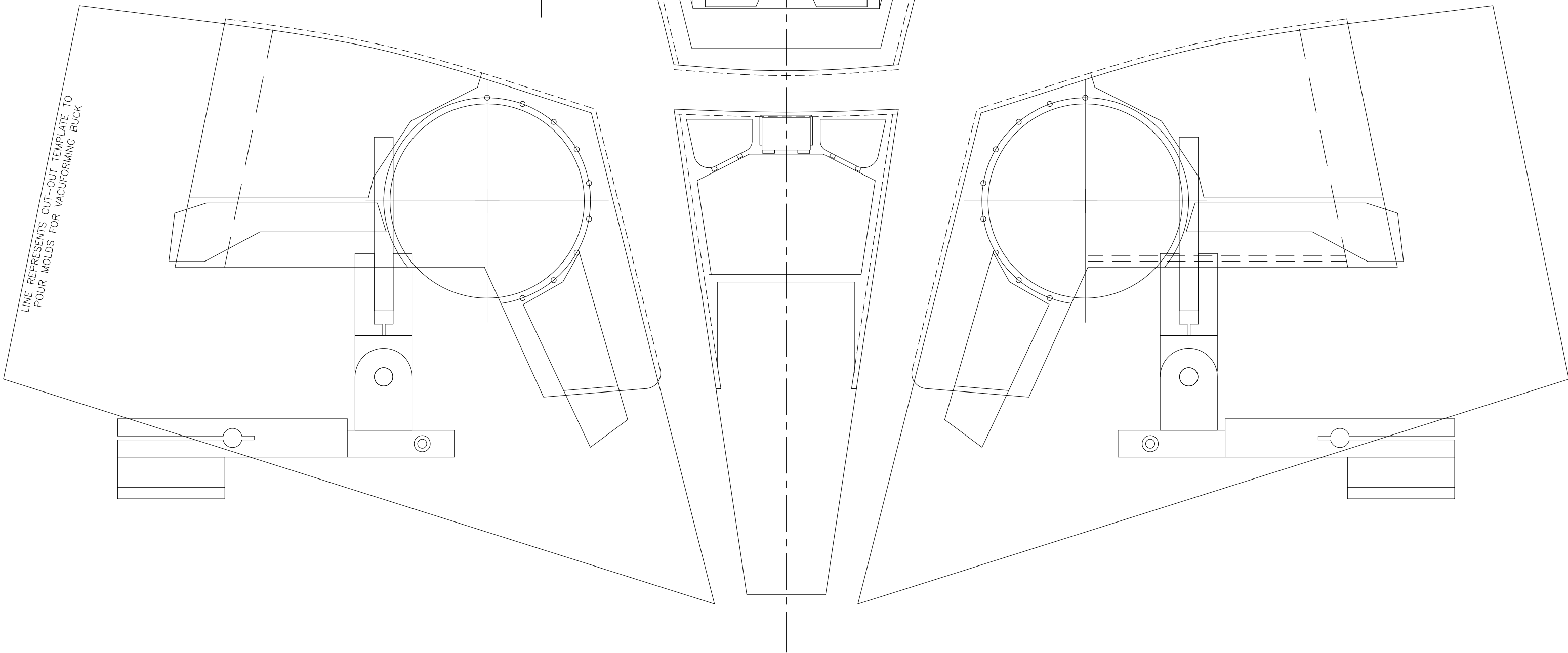
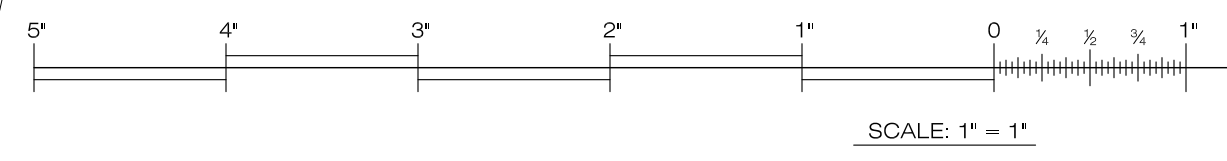
THIS CHART IS FOR INFORMATIONAL PURPOSES ONLY & ALL PIECES MUST BE CONFIRMED. PIECES & QUANTITIES SHOWN ON CHART ARE FOR PRODUCTION OF HERO (ONE-SIDED) FILMING PROP ONLY - ADJUSTMENTS MUST BE MADE IF DIFFERENT VERSION IS BEING CONSTRUCTED.

- *A - A19, A21, A27, C3, A47
- *B - A16, A17, A21
- *C - F12, F13, F34, F35, G16, G17
- *D - D2, D3, D4, D5, D6, D7, E42, E43, E51, E52
- *E - E62, F13, F14
- *F - A3, B2, B5, C9, C10, (HEAD RING?)
- *G - B4, B6, E17
- *H - C43, C44, & WHEELS (NO.?)
- *I - A30, A31, B25
- *J - A1, A22, C17
- *K - E24, D8, D9, D6, D7
- *L - C15, C27, C30
- *M - G21, G22



HEAD CONSTRUCTION

THIS PORTION OF THE PROJECT TO BE MADE OF PLASTIC SHEET & SHOULD BE IGNORED BY THE ARMATURE MACHINIST. IT IS PROVIDED HERE ONLY FOR REFERENCE. TEMPLATE PROVIDED HERE ASSUMES PLATE MATERIAL TO BE 0.06" THICK.



CONTRIBUTORS
JASON EATON
ALLAN HANSEN
LEE RALPH
JULIEN CERESA
QUINCY CUTSHAW



AT-ST
STUDIO SCALE PROP REPLICA

-ARMATURE CONSTRUCTION, V3.0
-PROFILES FOR VACUFORMED HEAD SHELL, V2.0
-MODEL DONOR PARTS MATRIX, V2.0