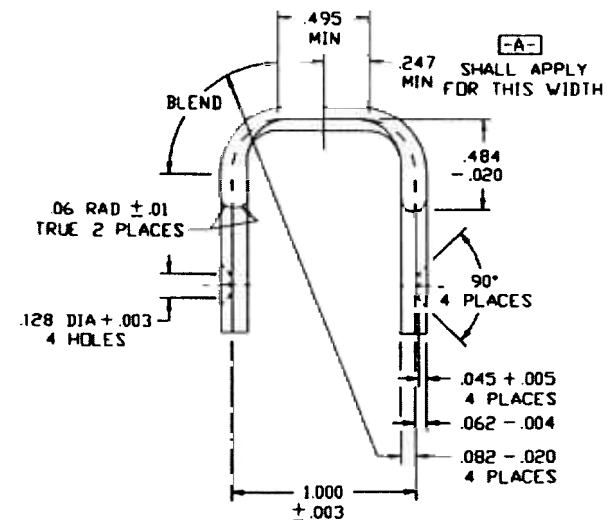
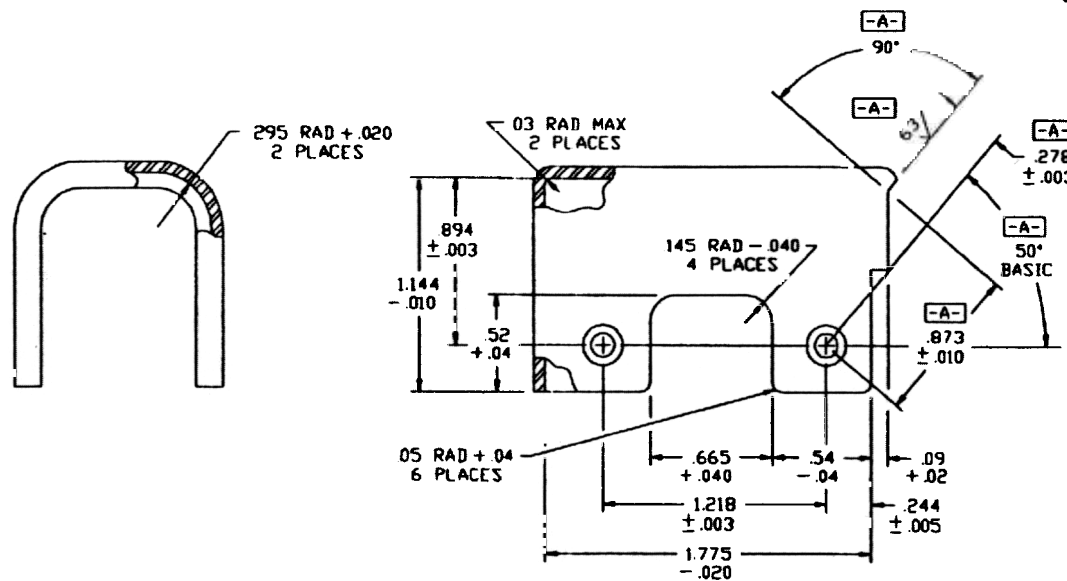


NOTES:

1. FINISH $125\sqrt{\text{EXCEPT AS NOTED SHEARED SURFACES } 250\sqrt{\text{UNLESS OTHERWISE SPECIFIED.}}$
2. ALL EDGES SHALL BE BROKEN 005 ± 010
3. MATERIAL- STEEL 00-S-698 CARBON .17 TO .24, MANGANESE .30 TO .60 DRAWING QUALITY KILLED.
4. HEAT TREATMENT- CARBURIZE AT 1600°F FOR $.005$ TO $.010$ CASE DEPTH. OIL QUENCH. TEMPER 30 MINUTES AT 350°F . HEAT TREATMENT METHOD IS FOR GUIDANCE, EXCEPT THAT CASE DEPTH AND HARDNESS REQUIREMENT ARE MANDATORY AND TIME AT TEMPERATURE SHALL NOT BE REDUCED BELOW THAT SPECIFIED. THE USE OF STRAIGHT CYANIDE BATH OR CARBONITRIDING PROCESS SHALL NOT BE PERMITTED WITHOUT PRIOR APPROVAL OF THE CONTRACTING OFFICER.
5. FILEHARD TEST IN ACCORDANCE WITH SA-STD-104. (H1)
6. FINAL PROTECTIVE FINISH 5312 OF MIL-STD-171



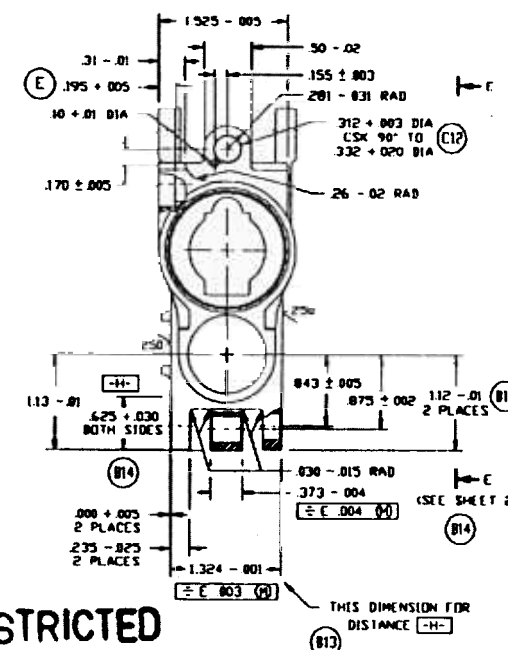
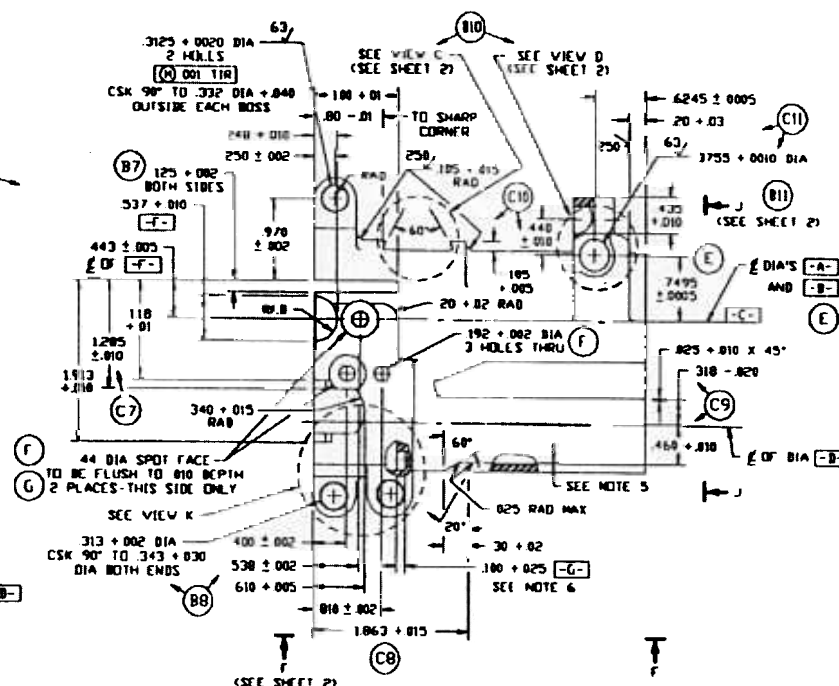
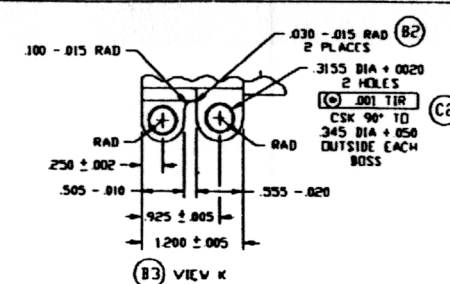
RESTRICTED MATERIAL
CONFIDENTIAL

NEXT ASSEMBLY	F11686308	MG, 7.62 MM - M60, M60C.
	F11699805	M60D

CODE IDENT NO. 19205
DRAWN FROM ORD PART NO. 7269252
SPRINGFIELD ARMORY ORDNANCE CORPS
DEPT OF THE ARMY
SPRINGFIELD 1, MASS

SYM	DESCRIPTION	SCALE: 2 TO 1	MATERIAL: SEE NOTE 3	CKD	DATE	TOLERANCES
G	REDRAWN WITH CHANGE SEE EO NO. SA30116	DWN.	FINISH: SEE NOTE 1			SEC 2 PL ±.02 H H ±.01
H	(1) SEE EO HRD 82232					SEC 3 PL ±.005 H H ±.027
						ANGLES ±.5°
						NO

TITLE: M60
BRIDGE, RECEIVER



- 1 FINISH 125/✓ EXCEPT AS NOTED.
2. ALL EDGES SHALL BE BROKEN .005 +.010
UNLESS OTHERWISE SPECIFIED.
3. ALL UNSPECIFIED RADII SHALL BE .030 +.030.
4. HEAT TREATMENT - HEAT AT 1535° TO 1565° F.
OIL QUENCH. TEMPER ONE HOUR TO HARDNESS SPECIFIED.
HEAT TREATMENT METHOD IS FOR GUIDANCE
EXCEPT THAT TEMPERING TIME SHALL NOT BE
REDUCED BELOW THAT SPECIFIED.
5. BREAK THRU SHALL BE PERMISSIBLE IN THIS AREA
PROVIDED RESULTANT BURRS ARE REMOVED.
6. .215 DIA - .015 (2) HOLES MAY BE MACHINED IN CORNERS
FOR DEPTH .6 TO PROVIDE REQUIRED RADIUS.
7. FINISH 5.3.12 OF MIL-STD-171. (G)
8. ALL RIVET HOLES AND THEIR C-SINKS MAY BE OMITTED (D)
OR LEFT UNDERSIZE PROVIDED THEY ARE PUT IN AT
ASSEMBLY TO THE DIMENSIONAL REQUIREMENTS
AT THE COMPONENT LEVEL.
9. MIL-W-13855 APPLIES (E)
10. MATERIAL - STEEL QQ-S-624 4140 , 8640 , 8740.

CONFIDENTIAL

**RESTRICTED
MATERIAL**

SYM	DESCRIPTION
A	SEE ED SA29002
B	(1-14) SEE ED SA30032
C	(1-15) SEE ED 82128
D	(1-2) SEE ED HRD 82232
E	(1-4) SEE ERR HDR 10724
F	(2) SEE ERR HDR 30781
G	(2) SEE HRD 755 0076-0002

CODE IDENT NO. 19204
DRAWN FROM ORD PART NO. 11686307 SHEET 1 OF 2
ROCK ISLAND ARSENAL
DEPT OF THE ARMY
ROCK ISLAND, ILL.

SCALE: FULL	MATERIAL: SEE NOTE 10	CRD.	TOLERANCES
DRAWN:	FINISH: SEE NOTE 1	DATE	DEC 4 P. 1 30 M R 1 31
TITLE: M60 RECEIVER		REV.	DEC 4 P. 1 005 M R 1 127
			ANGLES: 1 3°



